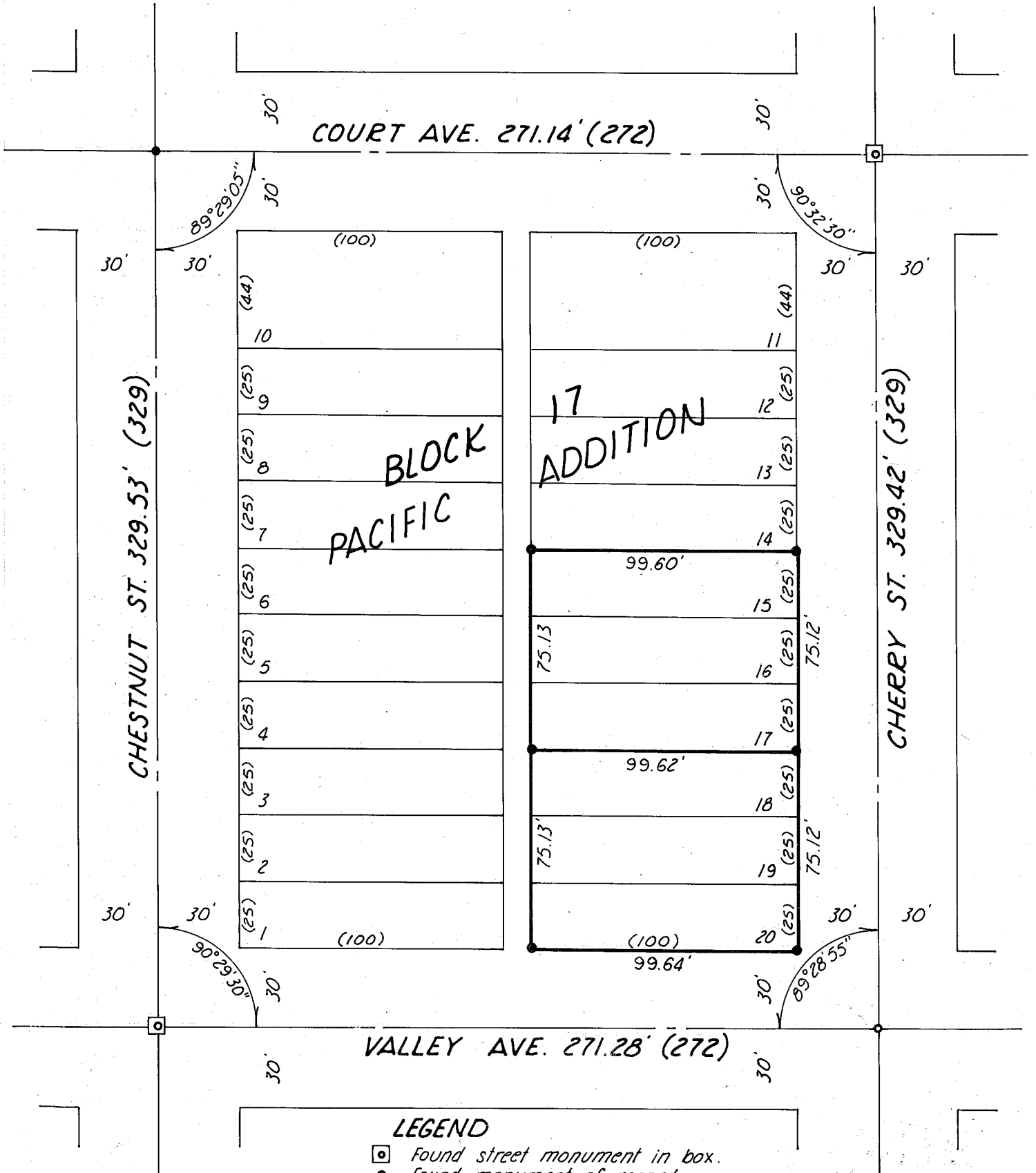


NARRATIVE TO ACCOMPANY SURVEY

The street monument at the intersection of Court Ave. and Chestnut St. has been destroyed. The remonumented location is based on reference by the City of Baker engineering department which locate the intersection 271.14 feet from Cherry St. and 329.53 feet from Valley Ave.



- LEGEND**
- ◻ Found street monument in box.
 - Found monument of record.
 - Set 7/8" x 30" rebar
 - () Original Plat record

FILED April 27, 1979
 BAKER COUNTY SURVEYOR
 SURVEY NO. 9-40-154

MAP OF SURVEY

Surveyed March 12 & 16 and April 27, 1979 Scale 1"=50'
 For Mrs. Anna Ferree

REGISTERED PROFESSIONAL LAND SURVEYOR
 William L. Hanley
 OREGON
 JULY 14, 1978
 WILLIAM L. HANLEY
 1639