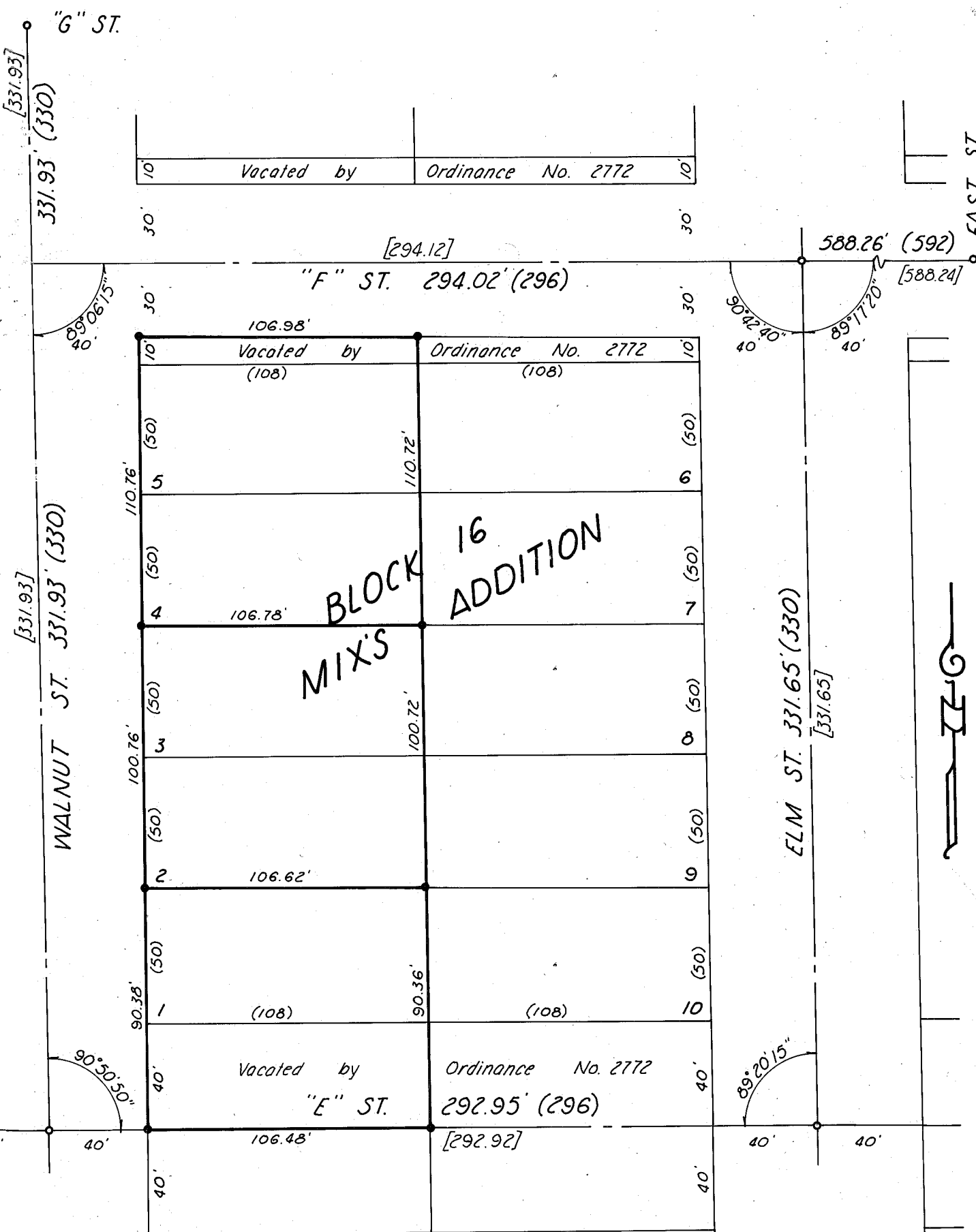


E and Walnut Sts. re-established mid-way between line of monuments on E and F Sts.



LEGEND

- Found 3/4" iron monument
- Set 3/8" rebar
- () Original Plat distance
- [] 1974 Resurvey distance

MAP OF SURVEY

Surveyed March 15 & 16, 1979 1" = 50'
For Aaron Densley

**REGISTERED
PROFESSIONAL
LAND SURVEYOR**

William L. Hanley

**OREGON
JULY 14, 1978
WILLIAM L. HANLEY
1639**

FILED March 28, 1979
BAKER COUNTY SURVEYOR
SURVEY NO. 9-40-140