

MADISON ST.

14

31

End. city mon. in box  
at angle point on  
Madison

City mon.

31.87

Mkd. M.H. rim

359.89 BAKER

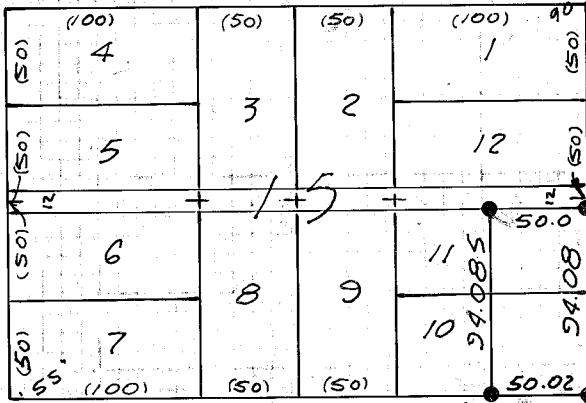
ST. ~~443.66~~ 443.66

Mkd. M.H. rim

Pt. of intersection

89°49'33"

90°13'44"



30

Set 4 rebar's for prop. cors.

Found, old iron pipe 0.13 ft. N. & 1.56 ft. W. of SE cor. Block 15.

City mon.

14.86

Mkd. M.H. rim

360.11

CHURCH ST.

360.27

Pt. of intersection  
street centerlines.

Mkd. M.H. rim

EAST ST.

16

CLARK ST.

BROADWAY

29

ASH ST.

Found mkd M.H. rim  
Washington St E

MAP OF SURVEY

E<sup>1</sup>/<sub>2</sub> LOTS 10 & 11, BLOCK 15, J. P. ATWOOD'S  
2ND ADDITION  
TO  
BAKER, OREGON

For Johnson Homes

May 5 & 12, 1978

Scale 1"=100'

FILED May 15, 1978

BAKER COUNTY SURVEYOR

SURVEY NO. 7-40-124 BC

REGISTERED  
PROFESSIONAL  
LAND SURVEYOR

James D. Hanley

OREGON  
SEPTEMBER 23, 1977  
JAMES D. HANLEY  
1206