

BLK 37

MILLER AVE

JACKSON'S
ADDITION
TO BAKER
OREGON

BLK 38

25 25

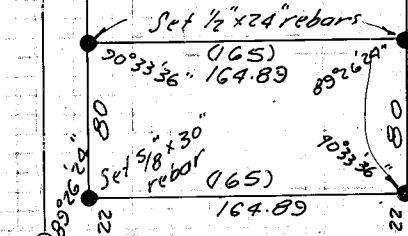
SECOND ST.

22 22

COLORADO ST.

Find city man. in box

Parcels along E line of
Second Street are described
by metes & bounds.



165

Find city man. in box at angle pt. in E 2nd Street monuments. 1710.35 ft. bet. monuments.

BAKER INDUSTRY AND
RESOURCES
CORPORATION
SUBDIVISION

INDUSTRIAL ROAD

MAIN ST.

T. 9 S., R. 40 E., W. 1/4

519.85 bet. mons.

20 21

29 Sec. cor. City monument in conc.

MAP OF SURVEY

TRACT IN SE 1/4 SE 1/4 SEC 20 T. 9 S., R. 40 E., W. 1/4

Surveyed for R.B. Smith
December 8, 1977

FILED December 8, 1977

BAKER COUNTY SURVEYOR

SURVEY NO. 9-40-112 BC

REGISTERED
PROFESSIONAL
LAND SURVEYOR

James D. Hanley

OREGON
SEPTEMBER 23, 1977
JAMES D. HANLEY
1206