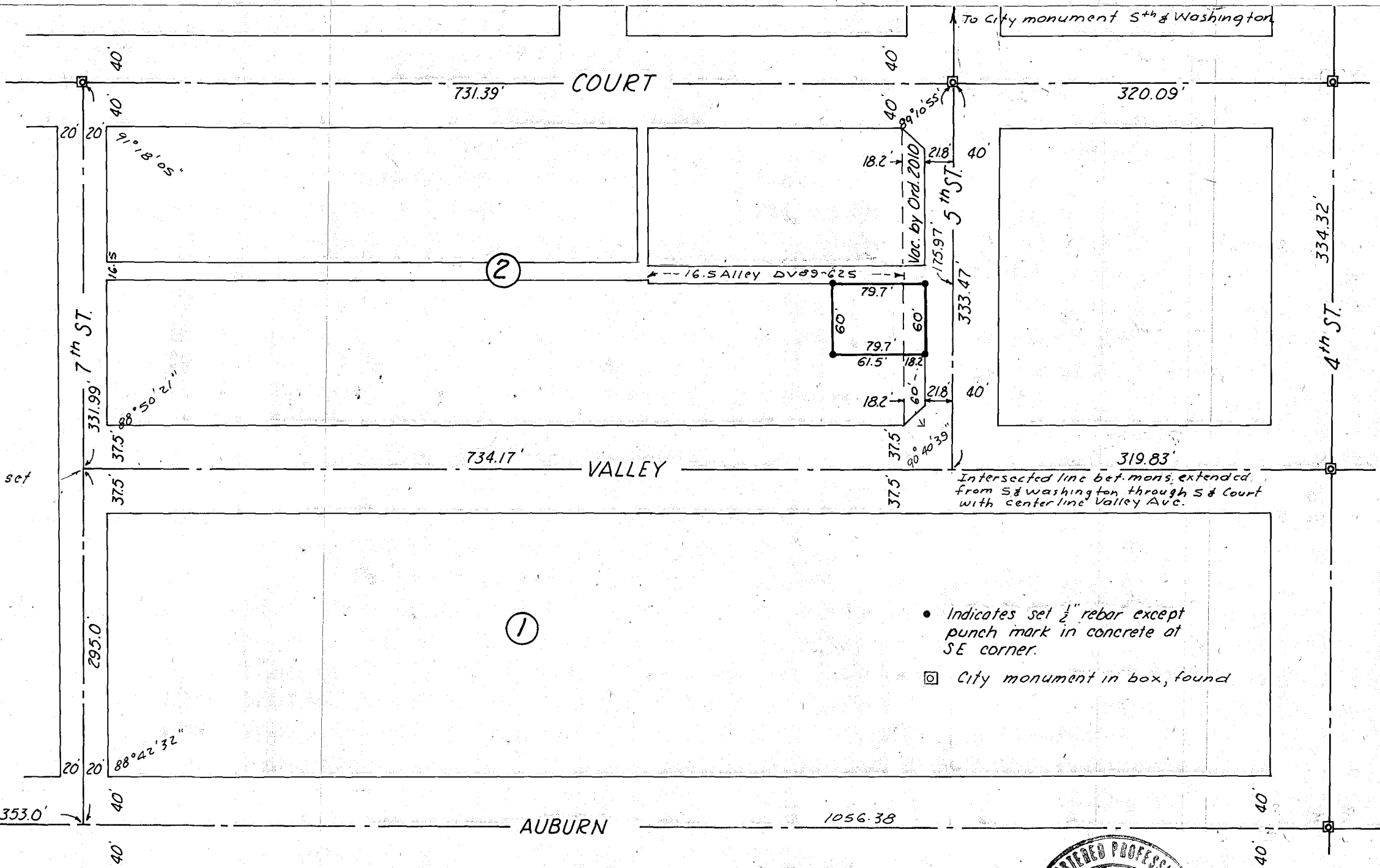


SE Cor. SE 1/4 SW 1/4 Sec. 17



Not set



- Indicates set 1/2" rebar except punch mark in concrete at SE corner.
- ☐ City monument in box, found

FILED Aug. 10, 1976
 BAKER COUNTY SURVEYOR
 SURVEY NO. 9-40-85 13C

MAP OF SURVEY
 IN BLOCK 2, KINNISON PLACE ADD'N
 TO BAKER, OREGON
 Surveyed Aug. 2, 1976 Scale 1"=100'

