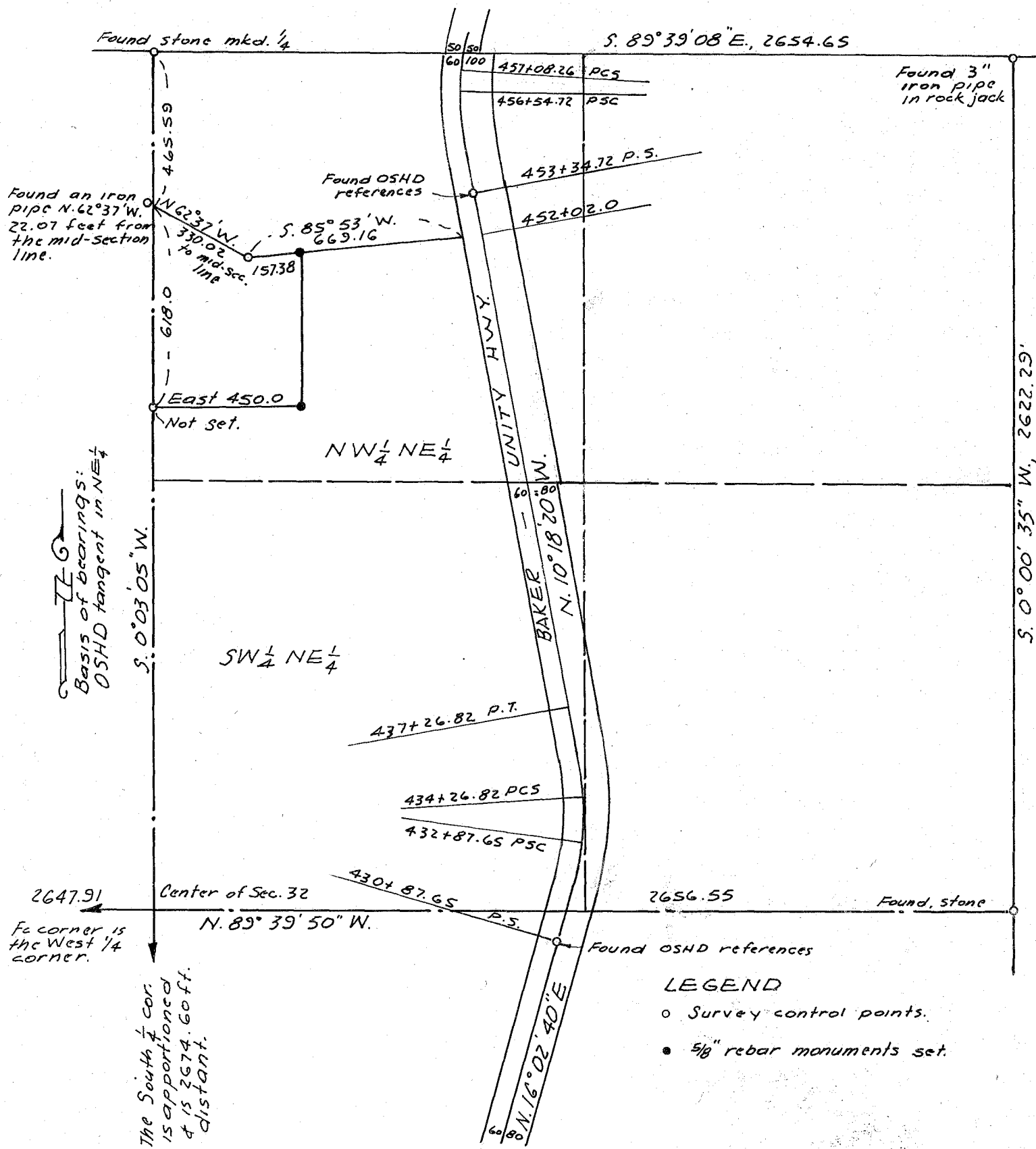


T. 9 S., R. 40 E., W. M.



MAP OF SURVEY

A PARCEL IN THE NE 1/4 SECTION 32, T. 9 S., R. 40 E., W. M., BAKER COUNTY, OREGON

For Raymond & Louise Boyer

September 8 & 11 & October 3, 1978

Scale 1" = 400'

FILED Oct. 10, 1978

BAKER COUNTY SURVEYOR

SURVEY NO. 9-40-63

REGISTERED  
PROFESSIONAL  
LAND SURVEYOR

James D. Hanley

OREGON  
SEPTEMBER 23, 1977  
JAMES D. HANLEY  
1206