

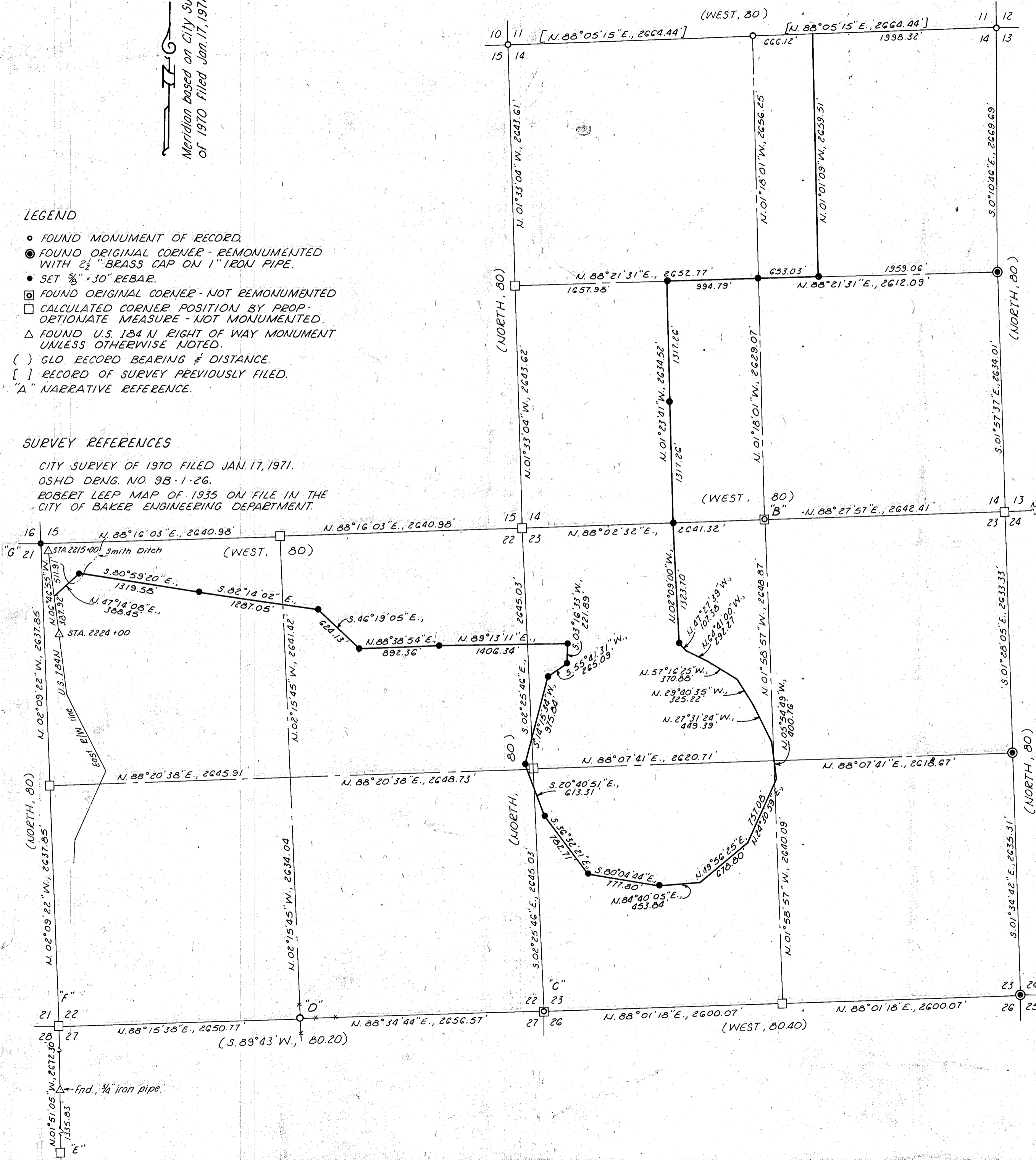
Meridian based on City Survey of 1970 Filed Jan. 17, 1971.

LEGEND

- FOUND MONUMENT OF RECORD
- ⊙ FOUND ORIGINAL CORNER - REMONUMENTED WITH 2 1/2" BRASS CAP ON 1" IRON PIPE.
- SET 3/8" x 30" REBAR.
- FOUND ORIGINAL CORNER - NOT REMONUMENTED
- ◻ CALCULATED CORNER POSITION BY PROP. ORTIONATE MEASURE - NOT MONUMENTED.
- △ FOUND U.S. 184 N. RIGHT OF WAY MONUMENT UNLESS OTHERWISE NOTED.
- () GLO RECORD BEARING & DISTANCE.
- [] RECORD OF SURVEY PREVIOUSLY FILED.
- "A" NARRATIVE REFERENCE.

SURVEY REFERENCES

CITY SURVEY OF 1970 FILED JAN. 17, 1971.
 OSHD DENG. NO. 9B-1-26.
 ROBERT LEEP MAP OF 1935 ON FILE IN THE CITY OF BAKER ENGINEERING DEPARTMENT.



SURVEY NARRATIVE

This survey was performed at the request of Mr. John Bootsma for the purpose of identifying the boundary between the parcel being sold from the part being retained by Mr. Bootsma in Sections 14, 22 and 23, T. 9 S., R. 40 E., W.M.

Certain government corners necessary for the execution of this survey were not found and therefore declared lost. In those cases the corner positions were calculated by the proper method of proportionate measurement.

Certain other government corners were found in their original locations or their positions were mathematically relocated from peripheral evidence and survey documents as narrated below:

- "A" Found stone, 30 x 18 x 6 inches, firmly set and marked 1/4 on North side. (GLO record states: set stone 30 x 18 x 4 ins)
- "B" Found stone, 22 x 10 x 8 inches, firmly set and marked 1/4 on North side. (GLO record states: set stone 24 x 10 x 12 ins)
- "C" Found stone, 24 x 15 x 4 inches, in east-west fence line and marked with 2 grooves on South side. No other markings identified. (GLO record states: set stone 24 x 15 x 4 ins)
- "D" Found fence corner post set in concrete from which the fence bears North, South and East. Original stone not recovered. (GLO record states: set stone 18 x 6 x 7 ins)
- "E-F" The west quarter section corner common to Sections 27 and 28 is reconstructed from OSHD tie recorded on OSHD Drng No. 9B-1-26, Baker-Pleasant Valley Section. The Northwest corner to Section 27 is reconstructed according to the Robert Leep, Registered Professional Engineer, map of 1935, wherein he tied to the fence corner marking the said quarter section corner common to Sections 27 and 28 (Leep station 26+83.7 from the Southwest corner of Section 27), the fence corner at station 40+02.3 (now monumented with a 3/4 inch pipe), and the Northwest corner to Section 27 (Leep station 53+56.0). The found 3/4 inch iron pipe bears N. 01°51'05" W., 1335.82 feet from the said corner common to Sections 27 and 28. No documentation is available for the origin or source of this iron pipe, but evidence exists that it lies in an old north-south fence line, and believed to be that fence shown on the Leep map. A projection along this found bearing at the Leep distance of 2672.3 feet from the said corner common to Sections 27 and 28 is the most likely position of the original section corner location. (Note that this distance of 2672.3 compares with 1335.83 feet from OSHD quarter section corner tie to the found iron pipe which was probably set at mid-point for 1/16 corner.)
- "G" Survey control of City Survey of 1970 recovered and corner re-established in its original position. (Original corner destroyed during construction of U.S. 184 N.)

FILED Feb. 10, 1982

BAKER COUNTY SURVEYOR
 SURVEY NO. 9-40-54

REGISTERED PROFESSIONAL LAND SURVEYOR
 James D. Hanley
 SEPTEMBER 21, 1971
 OREGON
 JAMES D. HANLEY
 1206

MAP OF SURVEY
 IN SECTIONS 14, 22 & 23, T. 9 S., R. 40 E., W.M.
 Surveyed March 16, 1981 Scale 1"=800'
 to Jan. 5, 1982
 For John Bootsma