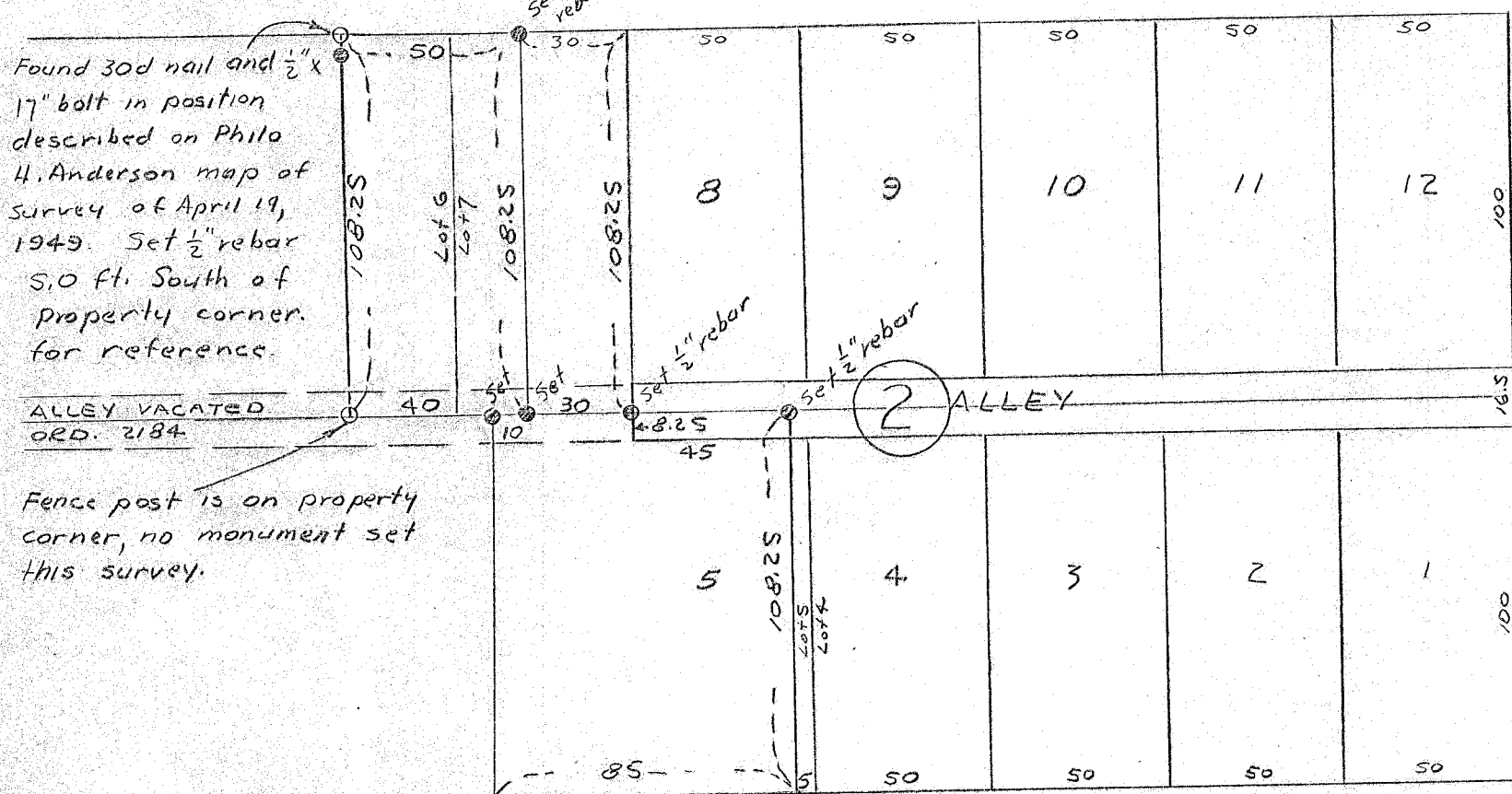


CHURCH ST.

Found monument

89°56'



GROVE ST. 276.52

BROADWAY AVE

Found monument

90°02'15"

To 47.52 ft. North of monument Broadway (West) and Resort Sts.

FILED April 26 74  
 BAKER COUNTY SURVEYOR  
 SURVEY NO. 9 40 53 BC

### MAP OF SURVEY

TRACTS IN LOTS 5, 6 & 7, BLOCK 2, J. P. ATWOOD'S ADDITION, BAKER, OREGON  
 April 17 & 18, 1974  
 Scale 1" = 50'

