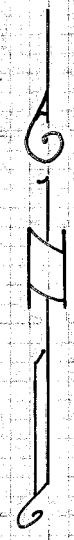
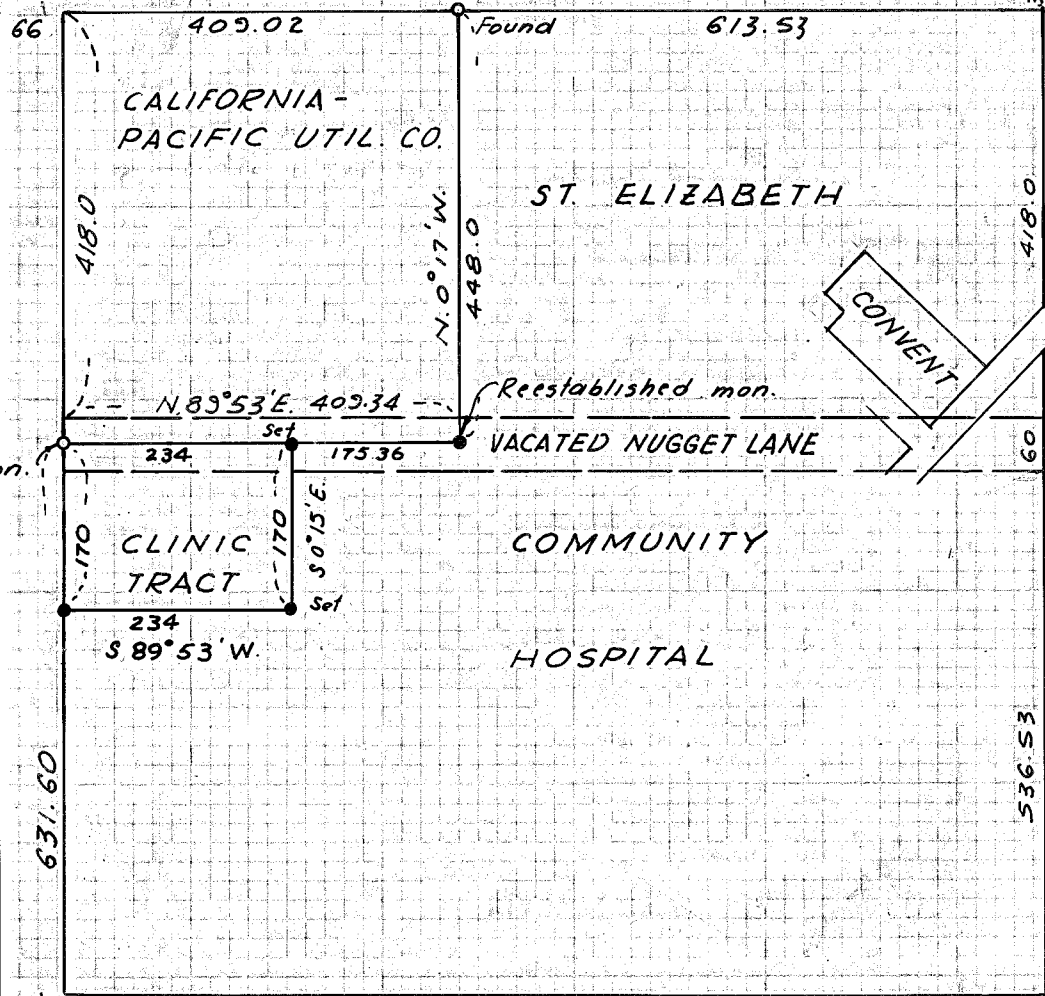


W 1/4 cor. Sec. 8, T. 9 S., R. 40 E., W. M.

POCAHONTAS ROAD

Found N. 89° 53' E. Found



CITY OF BAKER 68-23-021
S. 89° 36' W., 1024.53

• Monuments set this survey = 1/2" rebar

CHICO ST.
1,530.49 ft. North
& 66 ft. East of
Sec. cor. 7, 8, 17 & 18,
T. 9 S., R. 40 E., W. M.

MAP OF SURVEY

CLINIC TRACT FROM ST. ELIZABETH
COMMUNITY HOSPITAL PROPERTY

April 17, 1974

Scale 1" = 200'

FILED April 25, 1974

BAKER COUNTY SURVEYOR

SURVEY NO. 9-40-52 BC

