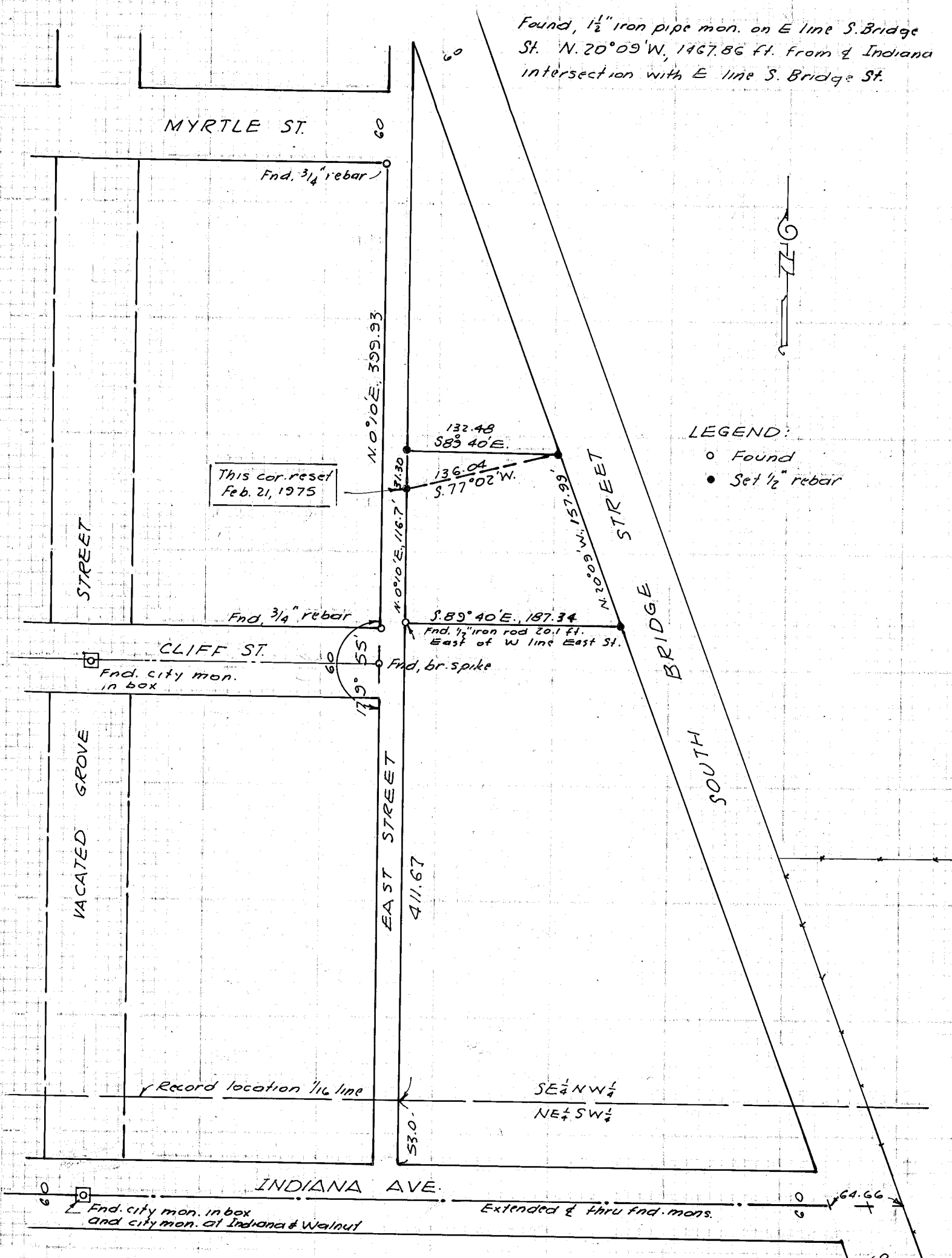


Found, 1/2" iron pipe mon. on E line S. Bridge St. N. 20° 09' W, 1467.86 ft. from $\frac{1}{2}$ Indiana intersection with E line S. Bridge St.



LEGEND:
 ○ Found
 ● Set 1/2" rebar

This cor. reset Feb. 21, 1975

79° 55'

53.0'

64.66'

MAP OF SURVEY
 A PARCEL IN WILOVALE ADD'N.
 SEC. 21, T9S, R. 40E, W.M.
 BAKER, OREGON

FILED Feb. 26, 1974
 BAKER COUNTY SURVEYOR
 SURVEY NO. 9-40-518C

Feb. 18 & 19, 1974 Scale 1" = 100'

