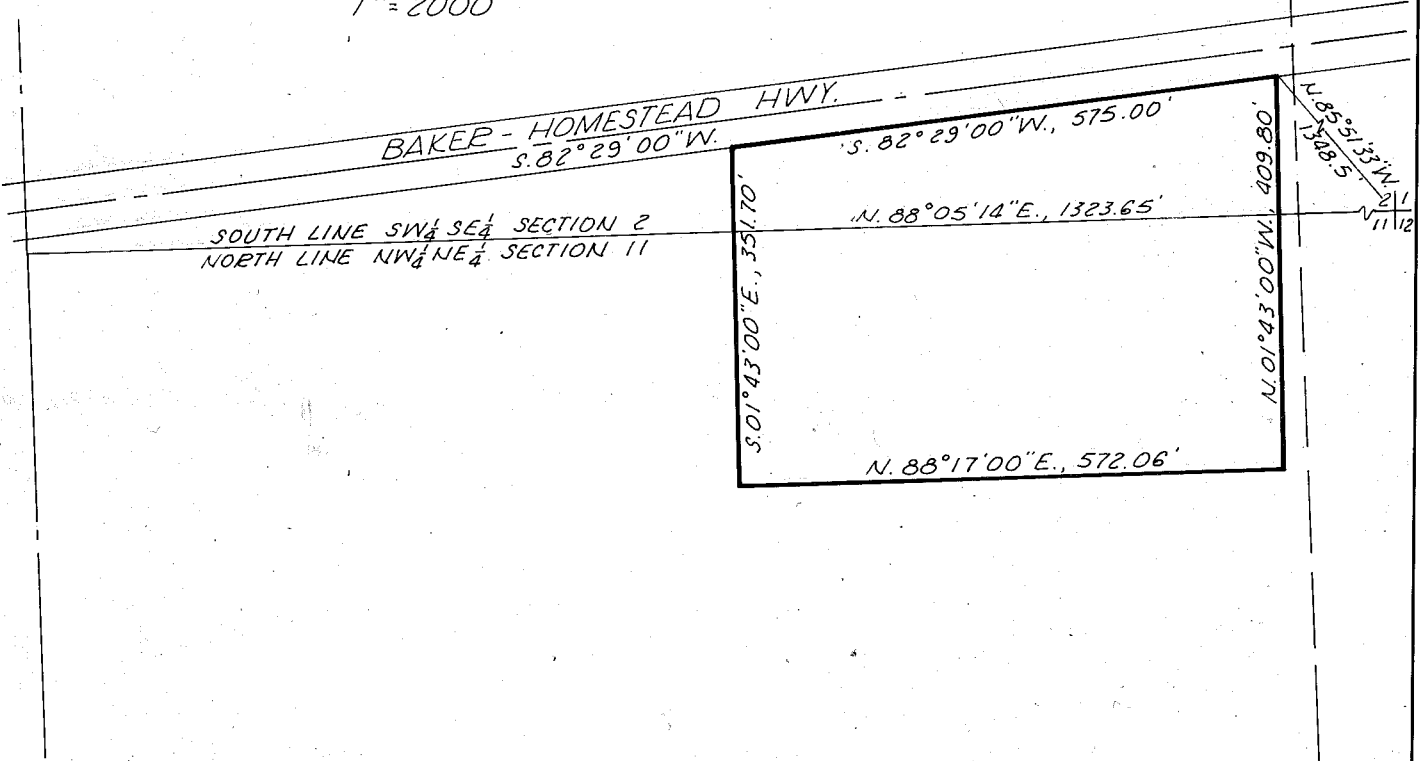


The line between Sections 2 and 11 bears N. 88° 05' 14\"/>

Reference Survey Nos. 9-40-25, 9-40-30 and 9-40-38B.



MAP TO ACCOMPANY DESCRIPTION
 IN THE NW 1/4 NE 1/4 SECTION 11 & SW 1/4 SE 1/4 SECTION 2
 T. 9 S., R. 40 E., W. M.

Surveyed Feb. 19, 1980 Scale 1"=200'
 FOR JOHN BOOTSMA

REGISTERED
 PROFESSIONAL
 LAND SURVEYOR

James D. Hanley

OREGON
 SEPTEMBER 23, 1977
 JAMES D. HANLEY
 1206

FILED June 12, 1980
 BAKER COUNTY SURVEYOR
 SURVEY NO. 9-40-40