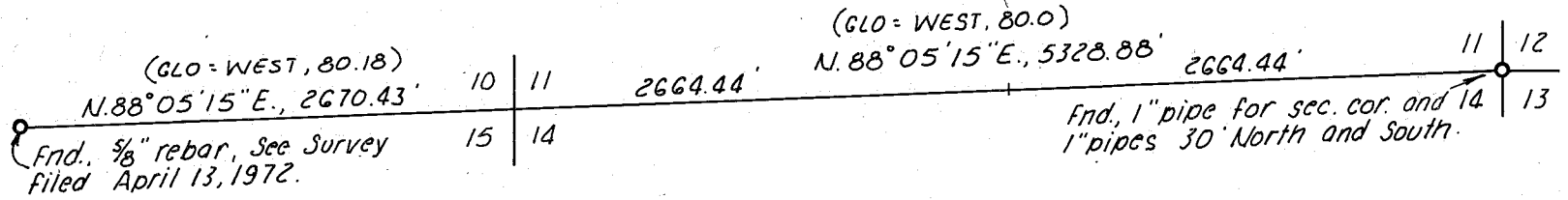


Meridian based on City Survey  
 of 1970 filed Jan. 17, 1971.



**SURVEY NARRATIVE**

The South quarter corner of Section 10, marked by a 5/8 inch rebar and the corner common to Sections 11, 12, 13 and 14, T. 9 S., R. 40 E., W.M., marked by an iron pipe, which in turn is referenced by iron pipes 30 feet North and 30 feet South were found in place. An East-West running county road has been constructed over the South quarter corner of Section 11 and the corner common to Sections 10, 11, 14 and 15.

These two obliterated corners were reestablished by East-West proportionate measurements between the two found corners for their East coordinates. The North coordinate for the missing section corner was determined by using the centerline of the existing county roadway, since the road had been constructed along the section lines.

The line between Sections 10 and 15 is a continuation of the line between Sections 11 and 14, using the above method of reestablishment. I believe the above results in the most likely positioning of the original corner locations. A North-South proportionate measurement would not result in centering the county road, and was rejected for that reason. No permanent monuments were established during the course of this survey.

FILED May 16, 1980  
 BAKER COUNTY SURVEYOR  
 SURVEY NO. 9-40-39

REGISTERED  
 PROFESSIONAL  
 LAND SURVEYOR  
  
*James D. Hanley*  
 OREGON  
 SEPTEMBER 23, 1977  
 JAMES D. HANLEY  
 1206

MAP OF SURVEY  
 FOR CORNER REESTABLISHMENT  
 IN SECTIONS 10, 11, 14 & 15, T. 9 S., R. 40 E., W.M.  
 Surveyed March 13 to April 2, 1980      Scale 1'=1000'  
 FOR JOHN BOOTSMA