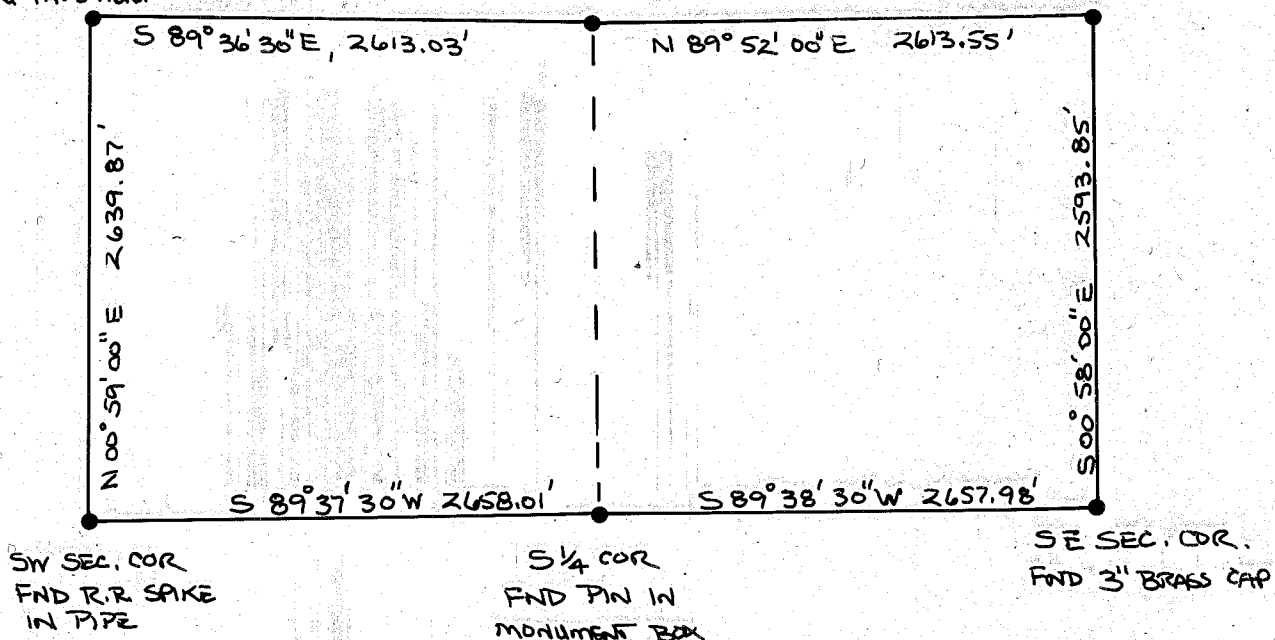


W 1/4 COR.
FND R.R. SPIKE
IN PAVEMENT

CENTER 1/4 COR
FND PIN IN
MONUMENT BOX

E 1/4 COR
SET 5/8" IRON ROD
IN PAVEMENT

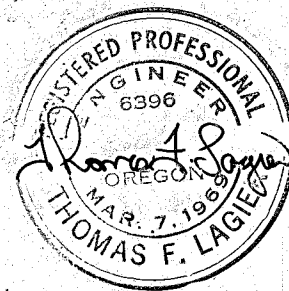


BASIS OF BEARING:
SOLAR OBSERVATION



SCALE: 1" = 1000'

RECORD OF SURVEY OF THE
S 1/2 OF SECTION 8, T 9 S., R 4 E. W. 1 M.
BAKER COUNTY, OREGON



SEPT. 1, 1972

SURVEYED BY TELEK ENGINEERING

FILED Oct. 27, 1972

BAKER COUNTY SURVEYOR

SURVEY NO. 9-40-35 BC

10-27-72

9-40-35