

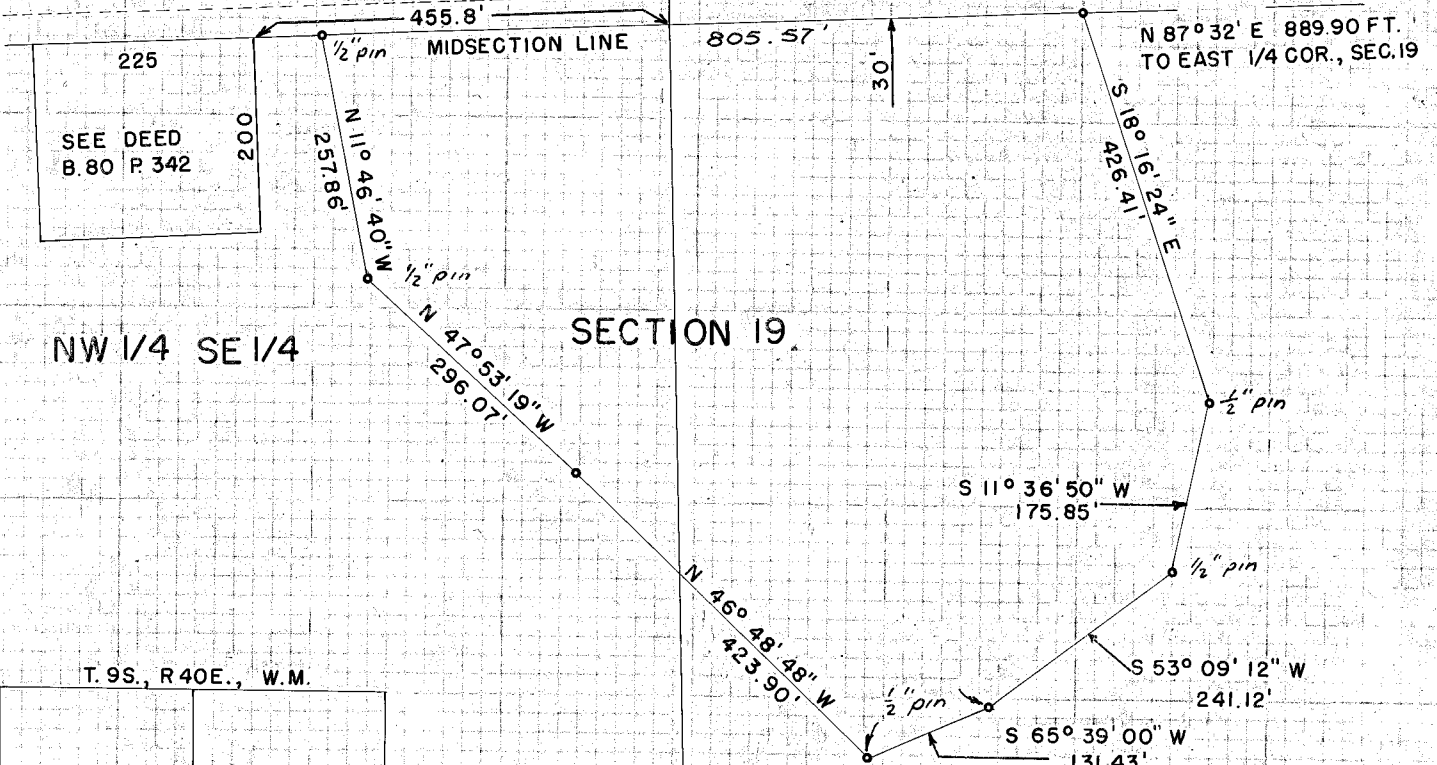
Meridian is City Grid of 1970

T. 9S., R 40E., W.M.

SE 1/4 NE 1/4

THIS PORTION OF STREET SW NE IS BY USEAGE, NOT DEDICATED

STOCKMAN MAP OF NOV. 8, 1919 SHOWS THIS PORTION OF INDIANA ST. 30 FT. WIDE

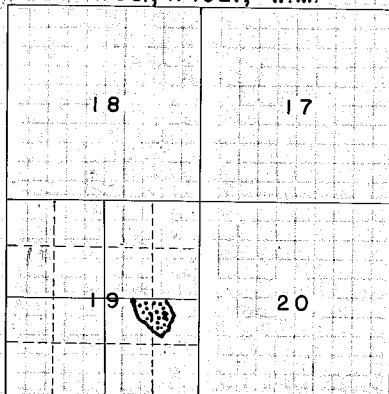


NW 1/4 SE 1/4

SECTION 19.

NE 1/4 SE 1/4

T. 9S., R 40E., W.M.



LOCATION SKETCH

TRACT SURVEY

SCALE: 1" = 200"

MAY 2-22, 1972

SURVEYED FOR TONY BRANDENTHALER

FILED June 2, 1972

BAKER COUNTY SURVEYOR

SURVEY NO. 9-40-3A BC

