

Note: True meridian used for this survey is based on a solar observation.

DESCRIPTION of PERIMETER of TRACT :

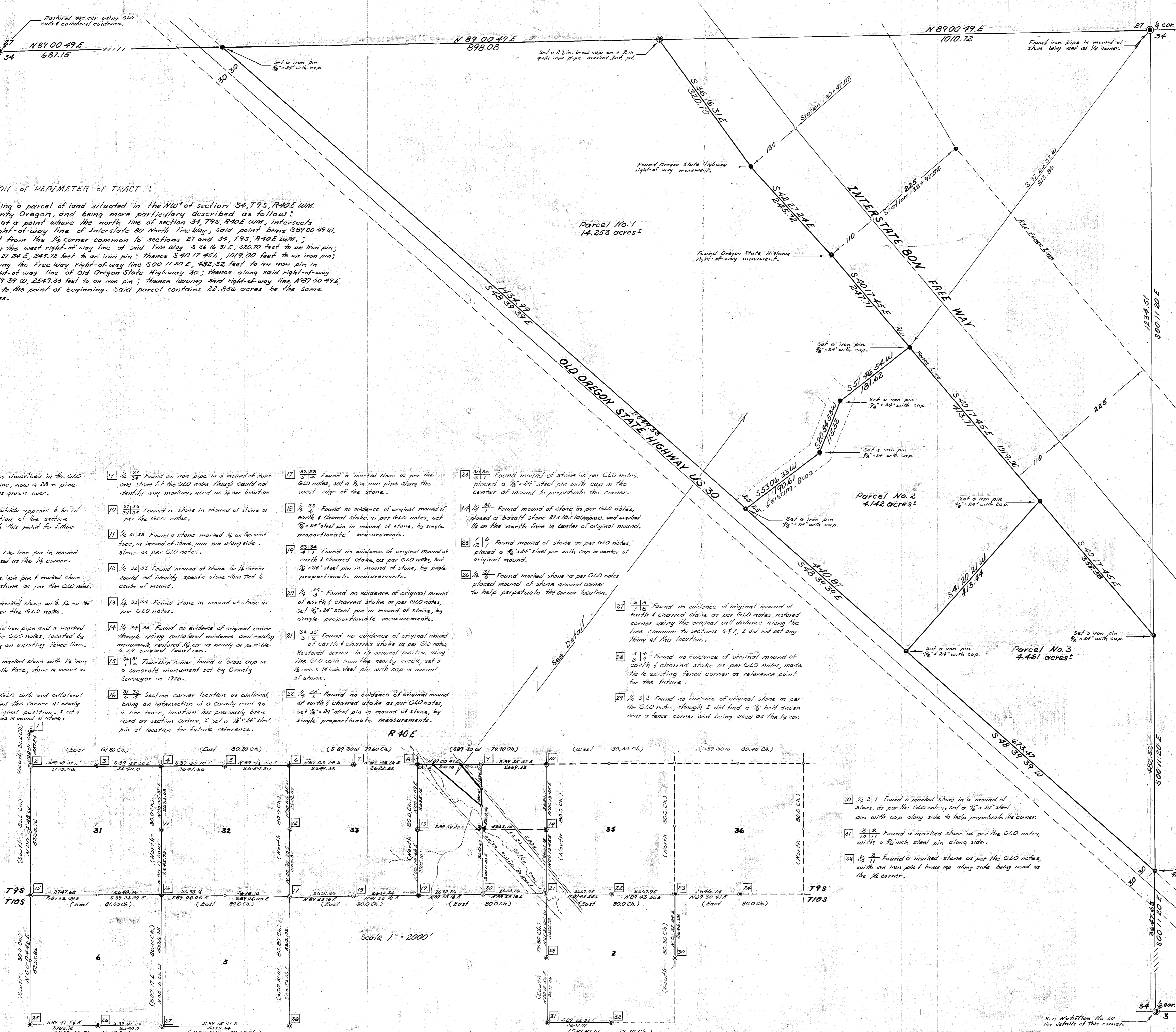
MAP: Showing a parcel of land situated in the NW⁴ of section 34, T9S, R40E, W11M, Baker County Oregon, and being more particularly described as follows:
 Beginning of a point where the north line of section 34, T9S, R40E, unit, intersects the west right-of-way line of Interstate 50 North Free Way, said point bears S89°00'49"W, 1010.72 feet from the 1/4 corner common to sections 27 and 34, T9S, R40E, W11M; thence along the west right-of-way line of said Free Way S 36° 16' 31"E, 320.70 feet to an iron pin; thence S 42° 21' 24"E, 245.72 feet to an iron pin; thence S 40° 17' 45"E, 1019.00 feet to an iron pin; thence leaving the Free Way right-of-way line S 00° 11' 20"E, 482.32 feet to an iron pin in the East right-of-way line of Old Oregon State Highway 30; thence along said right-of-way line N 43° 39' 39" W, 2549.33 feet to an iron pin; thence leaving said right-of-way line N 89° 00' 49"E, 898.08 feet to the point of beginning. Said parcel contains 22.856 acres be the same more or less.

THE ALVIN WARD SURVEY
 NW⁴ of Section 34, T9S R40E W11M
 BAKER COUNTY OREGON
 Scale 1"=100' Date 4-18-78

- 1 A line tree as described in the GLO notes as a 1 1/2" pine, now a 2 1/2" pine with line blazes grown over.
- 2 A fence corner which appears to be the actual location of the section corner I tied to this point for future reference.
- 3 1/4 30 Found a 1/4" iron pin in mound of stone being used as the 1/4 corner.
- 4 30/32 Found a 1/4" iron pin & marked stone in a mound of stone as per the GLO notes.
- 5 1/4 31 Found a marked stone with 1/4" on the north face as per the GLO notes.
- 6 27/28 Found a 2" iron pipe and a marked stone as per the GLO notes, located by a rock jack along an existing fence line.
- 7 1/4 33 Found a marked stone with 1/4" on the north face, stone in mound as per GLO notes.
- 8 28/27 Using the GLO calls and callateral evidence I restored the corner as nearly possible to its original position, I set a 1/2" x 24" steel pin with cap in mound of stone.
- 9 1/4 34 Found an iron pipe in a mound of stone one stone to the GLO notes though could not identify any marking, used as 1/4 corner location.
- 10 27/28 Found a stone in mound of stone as per the GLO notes.
- 11 1/4 31 Found a stone marked 1/4" on the west face, in mound of stone, iron pin along side, stone as per GLO notes.
- 12 1/4 32 Found mound of stone for 1/4 corner could not identify specific stone that tied to center of mound.
- 13 1/4 33 Found stone in mound of stone as per GLO notes.
- 14 1/4 34 Found no evidence of original corner though using callateral evidence and existing monuments, restored 1/4 corner as nearly as possible to its original location.
- 15 34/35 Township corner, found a brass cap in a concrete monument set by County Surveyor in 1976.
- 16 31/32 Section corner location as confirmed being an intersection of a county road and a line fence, location has previously been used as section corner, I set a 1/2" x 24" steel pin at location for future reference.
- 17 31/32 Found a marked stone as per the GLO notes, set a 1/2" x 24" steel pin with cap in the west edge of the stone.
- 18 1/4 34 Found no evidence of original mound of earth & charred stake, as per GLO notes, placed a 3/8" x 24" steel pin in mound of stone, by simple proportionate measurements.
- 19 31/32 Found no evidence of original mound of earth & charred stake, as per GLO notes, set a 3/8" x 24" steel pin in mound of stone, by simple proportionate measurements.
- 20 1/4 35 Found no evidence of original mound of earth & charred stake as per GLO notes, set 1/2" x 24" steel pin with cap in mound of stone.
- 21 34/35 Found no evidence of original mound of earth & charred stake as per GLO notes, restored corner to its original position using the GLO calls from the nearby creek, set a 1/2" x 24" steel pin with cap in mound of stone.
- 22 1/4 35 Found no evidence of original mound of earth & charred stake as per GLO notes, set 1/2" x 24" steel pin in mound of stone, by simple proportionate measurements.
- 23 21/22 Found mound of stone as per GLO notes, placed a 3/8" x 24" steel pin with cap in the center of mound to perpetuate the corner.
- 24 1/4 36 Found mound of stone as per GLO notes, placed a basalt stone 2 1/2" x 10" (approx), and marked 1/4" on the north face in center of original mound.
- 25 1/4 37 Found mound of stone as per GLO notes, placed a 3/8" x 24" steel pin with cap in center of original mound.
- 26 1/4 38 Found marked stone as per GLO notes placed mound of stone around corner to help perpetuate the corner location.
- 27 6/15 Found no evidence of original mound of earth & charred stake as per GLO notes, restored corner using the original call distance along the line common to sections 6 & 7, I did not set any thing at this location.
- 28 5/14 Found no evidence of original mound of earth & charred stake as per GLO notes, made tie to existing fence corner as reference point for the future.
- 29 1/4 31 Found no evidence of original stone as per the GLO notes, though I did find a 3/8" steel driven near a fence corner and being used as the 1/4 corner.

- 30 1/4 21 Found a marked stone in a mound of stone, as per the GLO notes, set a 3/8" x 24" steel pin with cap along side to help perpetuate the corner.
- 31 3/12 Found a marked stone as per the GLO notes, with a 3/8" inch steel pin along side.
- 32 1/4 31 Found a marked stone as per the GLO notes, with an iron pin & brass cap along side being used as the 1/4 corner.

SURVEYORS CERTIFICATE :
 I, James H. Hambleton, being a registered Land Surveyor in the State of Oregon, do hereby certify that this plat correctly represents a survey made by me or under my direction, for Alvin Ward, using public and private records and in conformance with the BLM manual and the laws of the State of Oregon.
 James H. Hambleton
 OALS 645



REGISTERED PROFESSIONAL LAND SURVEYOR
 JAMES H. HAMBLETON
 OREGON JULY 16, 1964
 OALS 645

FILED May 4, 1978
 BAKER COUNTY SURVEYOR
 SURVEY NO. 33 B