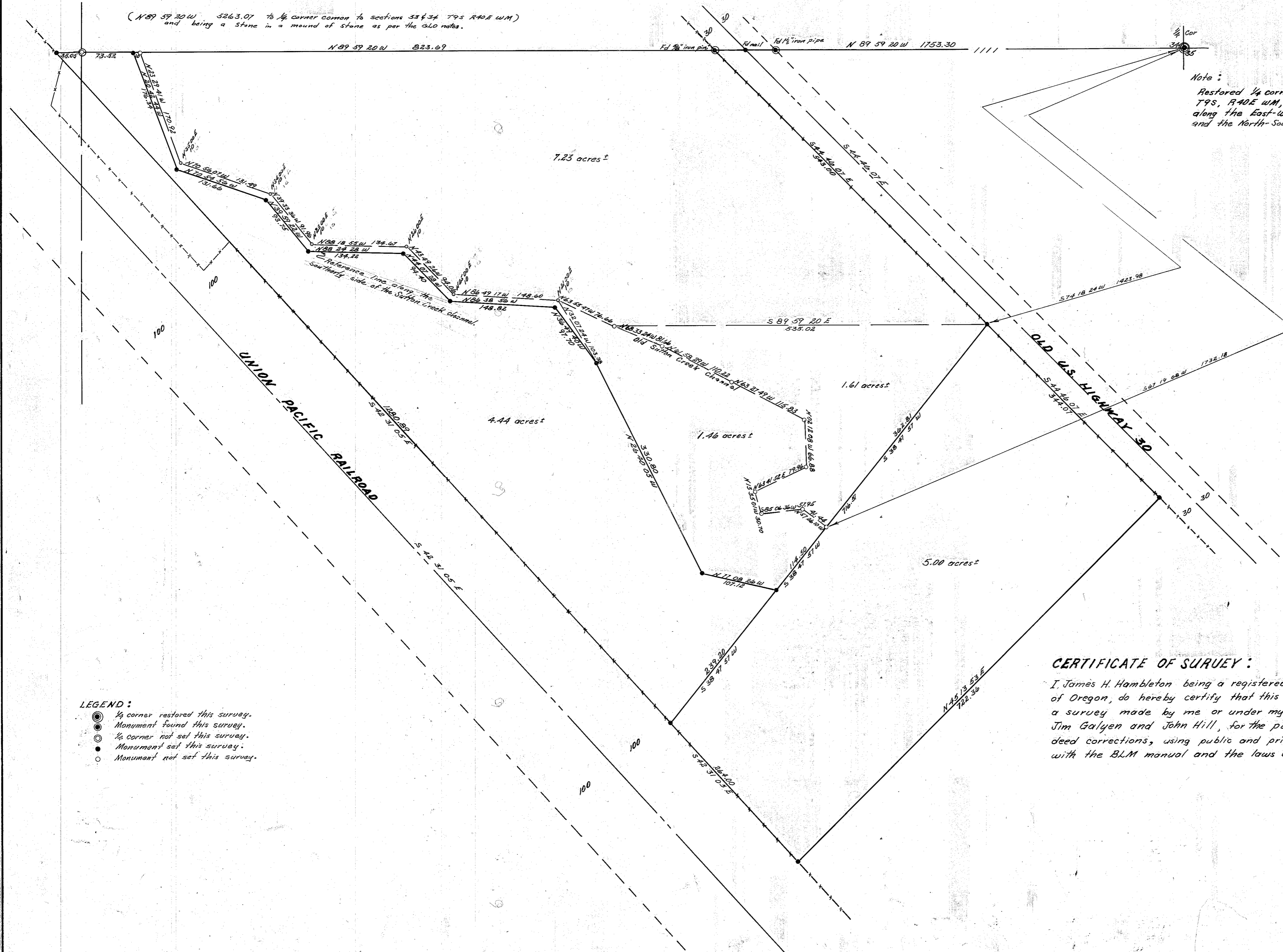


**RECORD of SURVEY**  
 Portion of the NW<sup>1</sup>SE<sup>1</sup> of Section 34  
 T9S R40E WM  
 BAKER COUNTY OREGON  
 Scale 1" = 100'      Date 7-7-78

NOTE: True meridian determined by  
 a solar observation.

(N 89 59 20 W 5263.07 to 1/4 corner common to sections 33 & 34 T9S R40E WM)  
 and being a stone in a mound of stone as per the GLO notes.

Note:  
 Restored 1/4 corner common to sections 34 & 35  
 T9S, R40E WM, using the found monuments  
 along the East-West section line of section 34  
 and the North-South line on the east side of sec. 34.



- LEGEND:**
- 1/4 corner restored this survey.
  - Monument found this survey.
  - 1/4 corner not set this survey.
  - Monument set this survey.
  - Monument not set this survey.

**CERTIFICATE OF SURVEY:**

I, James H. Hambleton being a registered land surveyor in the state of Oregon, do hereby certify that this plat correctly represents a survey made by me or under my direction, for Chuck Pfeil, Jim Galyen and John Hill, for the purpose of land sales and deed corrections, using public and private records and in conformance with the BLM manual and the laws of the State of Oregon.

James H. Hambleton  
 ORS 645

FILED July 31, 1978  
 BAKER COUNTY SURVEYOR  
 SURVEY NO. 9-40

REGISTERED  
 PROFESSIONAL  
 LAND SURVEYOR

James H. Hambleton

OREGON  
 JULY 10, 1964  
 JAMES H. HAMBLETON  
 CAS

7-31-78