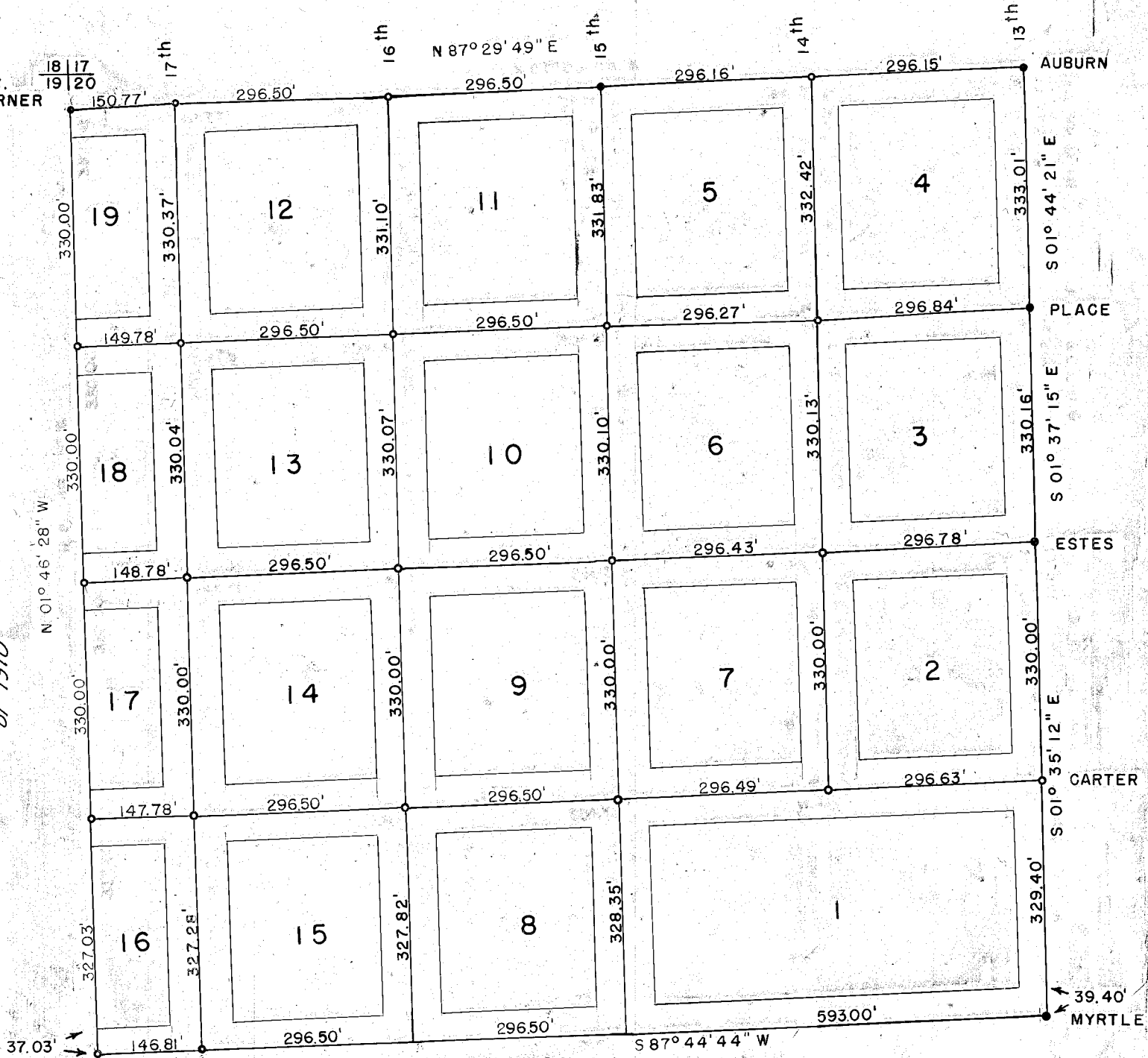


Meridian based on City Survey of 1970

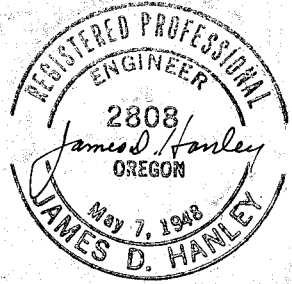
SEC.  $\frac{18}{19} \frac{17}{20}$   
CORNER



1317.02' TO 1/4 COR.

MONUMENTS SET: ○  
MONUMENTS FOUND: ●  
SCALE: 1" = 200'

**KELLOGG ADDITION**  
Baker, Oregon  
MONUMENTATION SURVEY  
SURVEYED APRIL 7-21, 1972



FILED April 27, 1972  
BAKER COUNTY SURVEYOR  
SURVEY NO. 9-40-31 BC