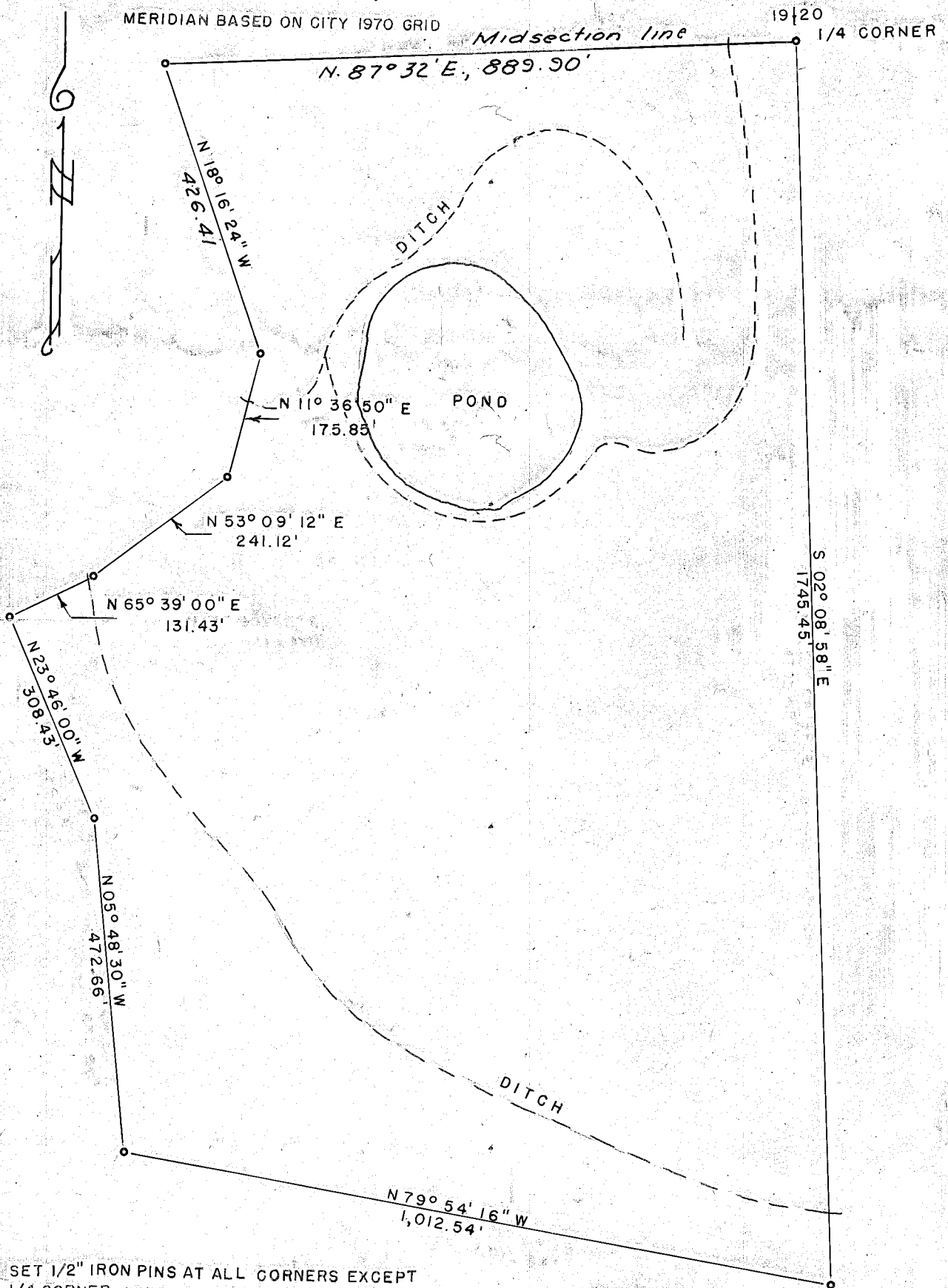


T. 9S., R40E., W.M.

MERIDIAN BASED ON CITY 1970 GRID



SET 1/2" IRON PINS AT ALL CORNERS EXCEPT 1/4 CORNER, WHICH IS FENCE POST.

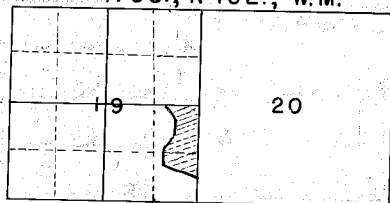
TRACT SURVEY

SCALE 1" = 200'

MARCH 25 - APRIL 10, 1972

SURVEYED FOR TONY BRANDENTHALER

T. 9S., R40E., W.M.



LOCATION SKETCH

FILED April 24, 1972

BAKER COUNTY SURVEYOR

SURVEY NO. 9-40-30 BE

