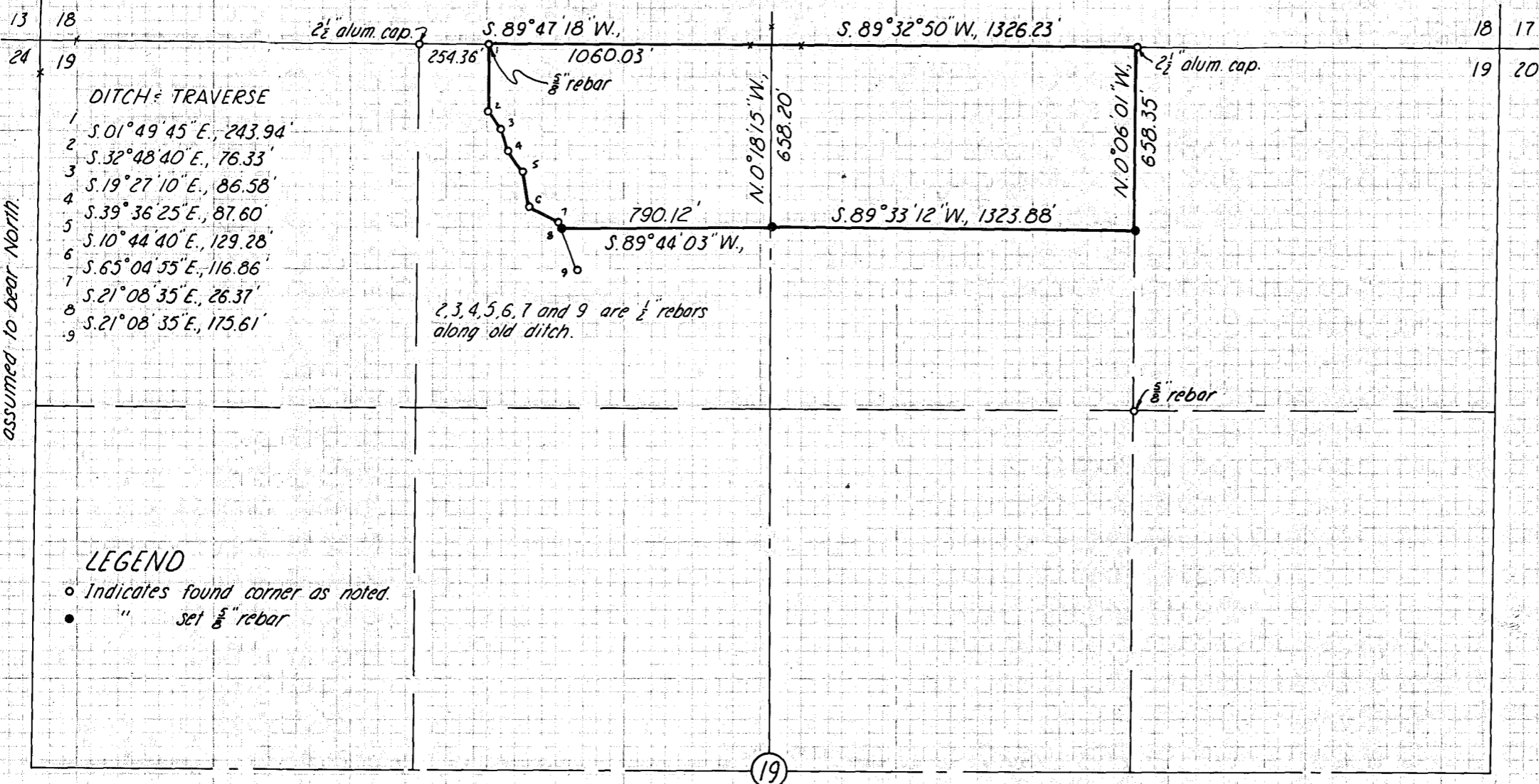


The Guide Meridian between Ranges 39 and 40 East is assumed to bear North.



- DITCH = TRAVERSE
- 1 S. 01° 49' 45" E., 243.94'
  - 2 S. 32° 48' 40" E., 76.33'
  - 3 S. 19° 27' 10" E., 86.58'
  - 4 S. 39° 36' 25" E., 87.60'
  - 5 S. 10° 44' 40" E., 129.28'
  - 6 S. 65° 04' 55" E., 116.86'
  - 7 S. 21° 08' 35" E., 26.37'
  - 8 S. 21° 08' 35" E., 175.61'
  - 9

2, 3, 4, 5, 6, 7 and 9 are 1/2" rebars along old ditch.

- LEGEND
- o Indicates found corner as noted.
  - " set 5/8" rebar

**MAP OF SURVEY**  
 A PARCEL IN THE NE 1/4 NW 1/4 & NW 1/4 NE 1/4  
 SECTION 19, T. 9S., R. 40E., W.M.

Surveyed Aug. 29 & 30, 1977 Scale 1" = 500'  
 For Jim Hanley, Carlyle Staab & Gary Bloom

FILED Aug. 31, 1977  
 BAKER COUNTY SURVEYOR  
 SURVEY NO. 7-40-29

