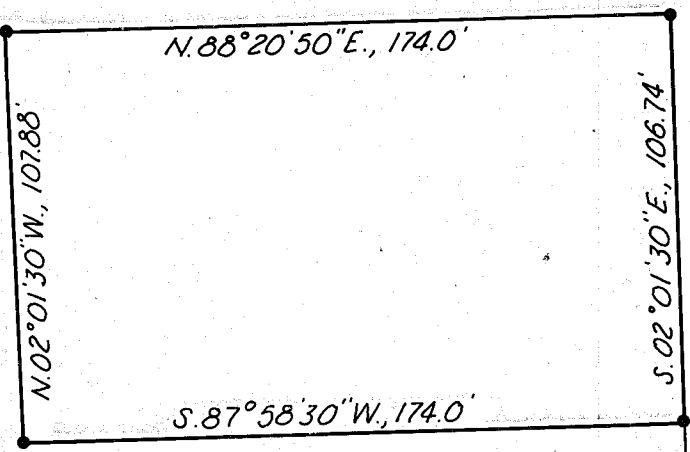


HUGHES LANE (as relocated, 1969)



112.85'

112.85'

BAKER-HOMESTEAD HWY.

60'



ID
icates set 1/2" rebar

TRACT SURVEY

A PARCEL IN THE NE 1/4 SW 1/4 SEC. 9, T. 9 S., R. 40 E., W. M.

Surveyed May 3 & 6, 1971 Scale 1" = 50'

For Marvin Hagenbach

15, 1971

SURVEYOR

1-40-28 BC

