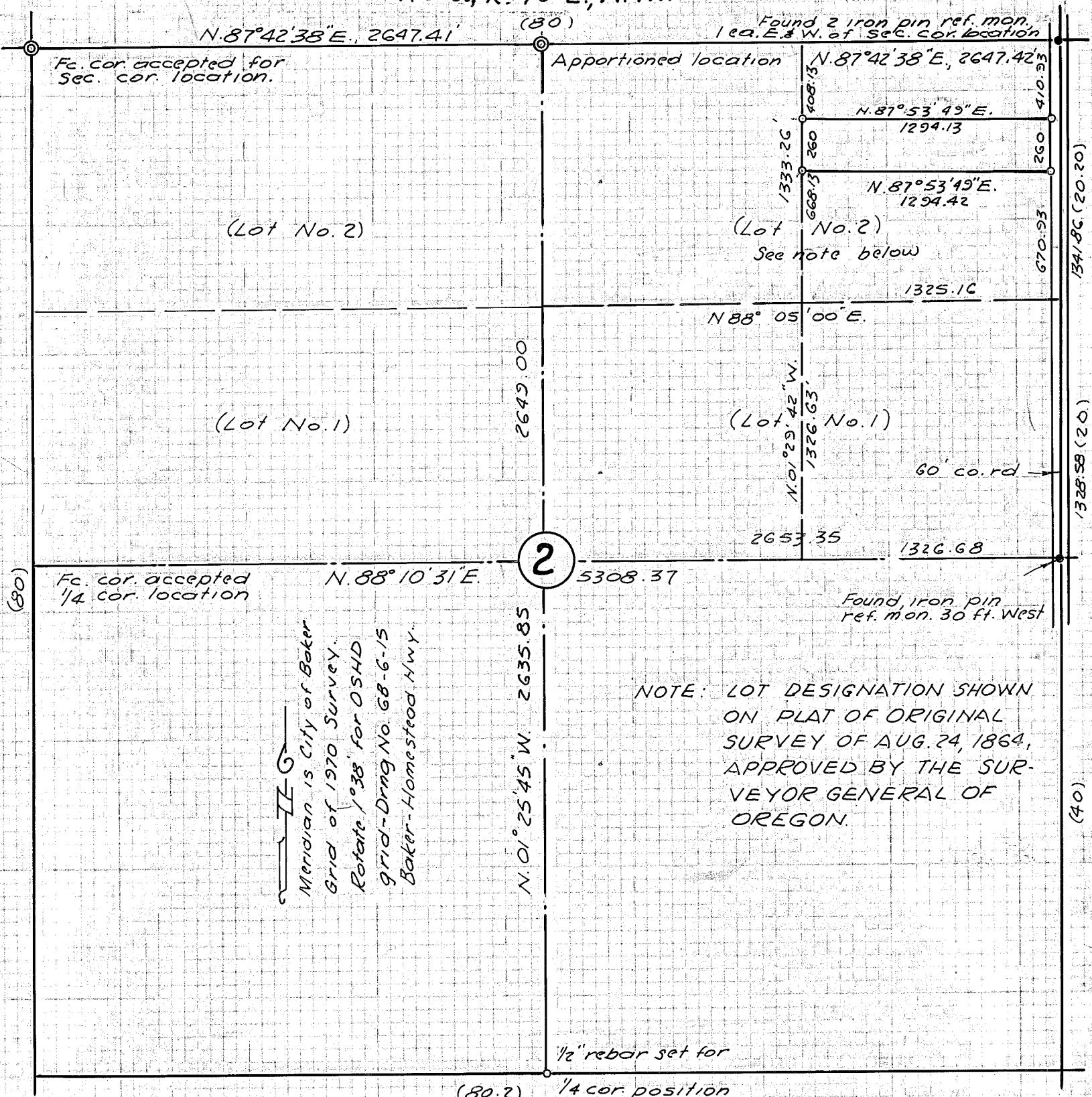


T. 9 S., R. 40 E., W. M.



- ⊙ Set 2 1/2" brass cap monument
- Set 5/8" rebar property corner
- Found, reference pins or monument

MAP OF SURVEY

For Barry Lawson  
March 29 & April 1, 1977

Scale 1" = 660 ft

FILED April 6, 1977  
BAKER COUNTY SURVEYOR  
SURVEY NO. 9-40-25

