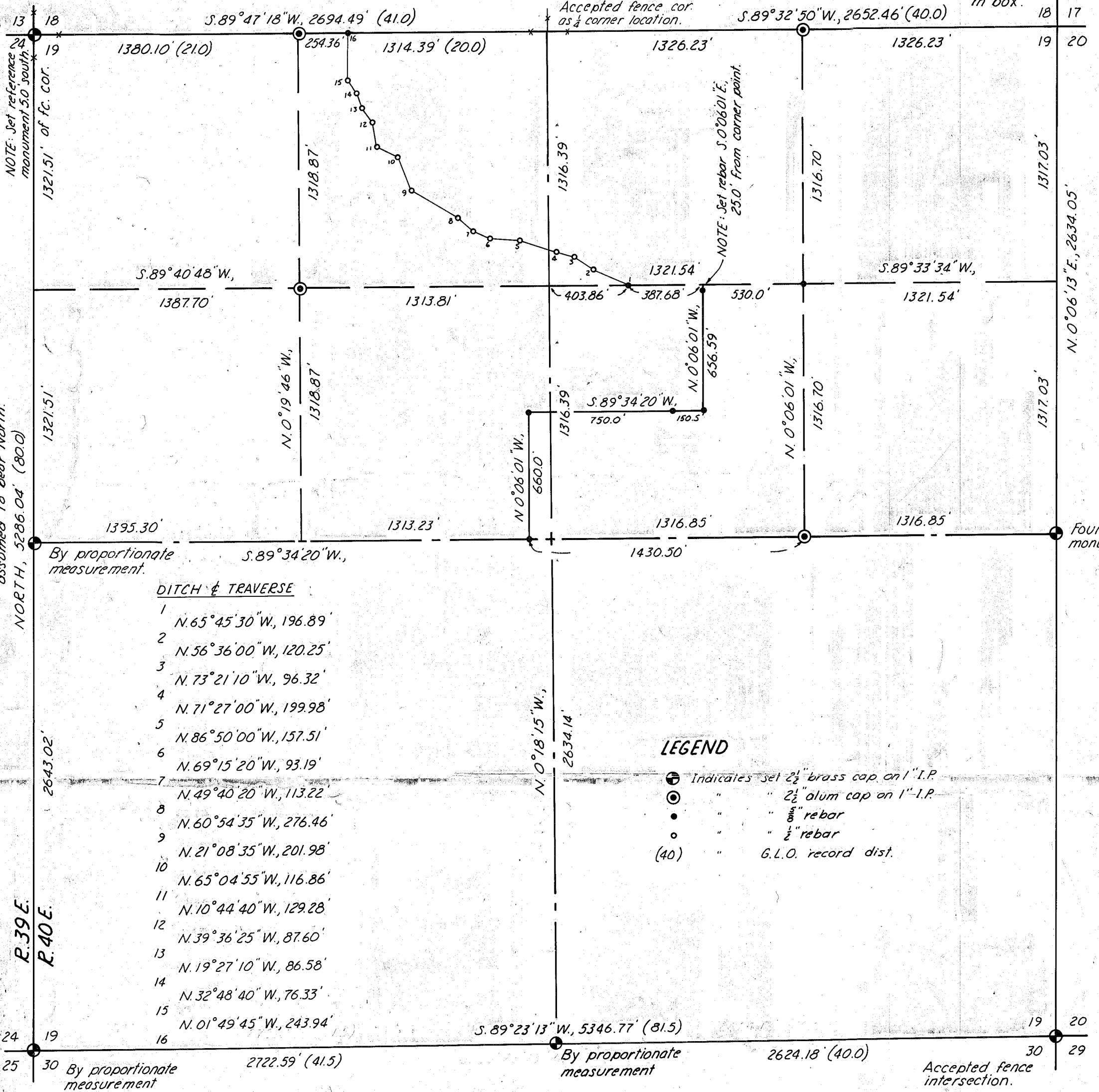


T.9S.

Found City mon. in box.



MAP OF SURVEY
IN THE N 1/2 OF SECTION 19, T.9S., R.40E., W.M.

Surveyed Dec. 8-16, 1976

Scale 1"=500'

For R. B. Smith

FILED Jan. 3, 1977

BAKER COUNTY SURVEYOR

SURVEY NO. 9-40-74

