

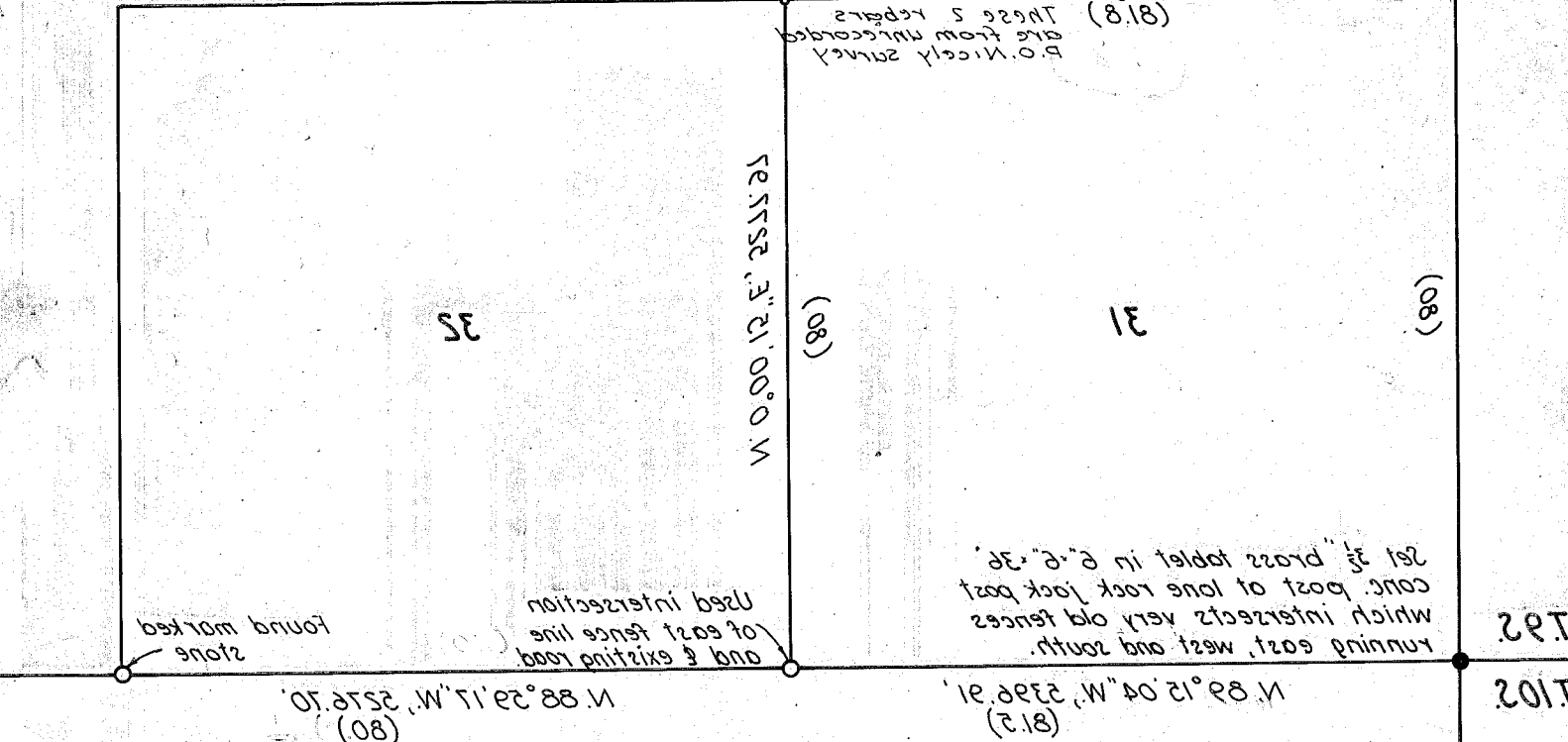
SURVEY NO. P-40-52  
 BAKER COUNTY SURVEYOR  
 FILED Jan. 5, 1917

Surveyed Dec. 8-13, 1916 Scale 1"=1500'  
 FOR BAKER COUNTY, OREGON  
 SECTION 19, T. 2 S. R. 40 E. W. 1 W.  
 REESTABLISHING THE 2M COR.  
 DEPENDENT RESURVEY FOR



3402'  
 3429'

T102  
 T92



Running east, west and south.  
 which intersects very old fences  
 conc. post of lone oak jack post  
 set 3 1/2" brass tablet in E. 1/2 S. 36'

Used intersection  
 of east fence line  
 and existing road

Found marked  
 stone

P.O. Nicely survey  
 are from unrecorded  
 These 5 repairs

Found 2nd repair  
 in fence line  
 N. 89° 40' 09" W. S. 83° 83'

NOTE: All original corners on  
 fence line bet. T. 2 S. R. 39 & 40  
 E. 1/2 W. 1 M. for 2 ccs. 19, 30 & 31 were  
 wood posts, set in 1863.

LEGEND

- ( ) G.L.O. record distance.
- " set brass cap monument.
- Indicates found object as noted.

Based on Bearings:  
 The Chief Meridian determined  
 at the base of the monument  
 is true and of good  
 accuracy of good work.



Found fence  
 intersection.

Found ref. mon.

Found mon.  
 in box, set  
 by City of Baker.

Section 29  
 289° 47' 18" W. S. 84° 49'

288° 00' (80)

289° 53' 13" W. S. 34° 6' 77"

19

30

31

32

80° 55' 27" W. S. 24° 7'

(80)

(80)

(80)

(80)

89° 55' 27" E. S. 21' 00" 0' W.

(81.8)

(81.8)

(81.2)

(81.2)

(81.0)

(41.0)

(80)

(80)

(80)

(80)

(80)