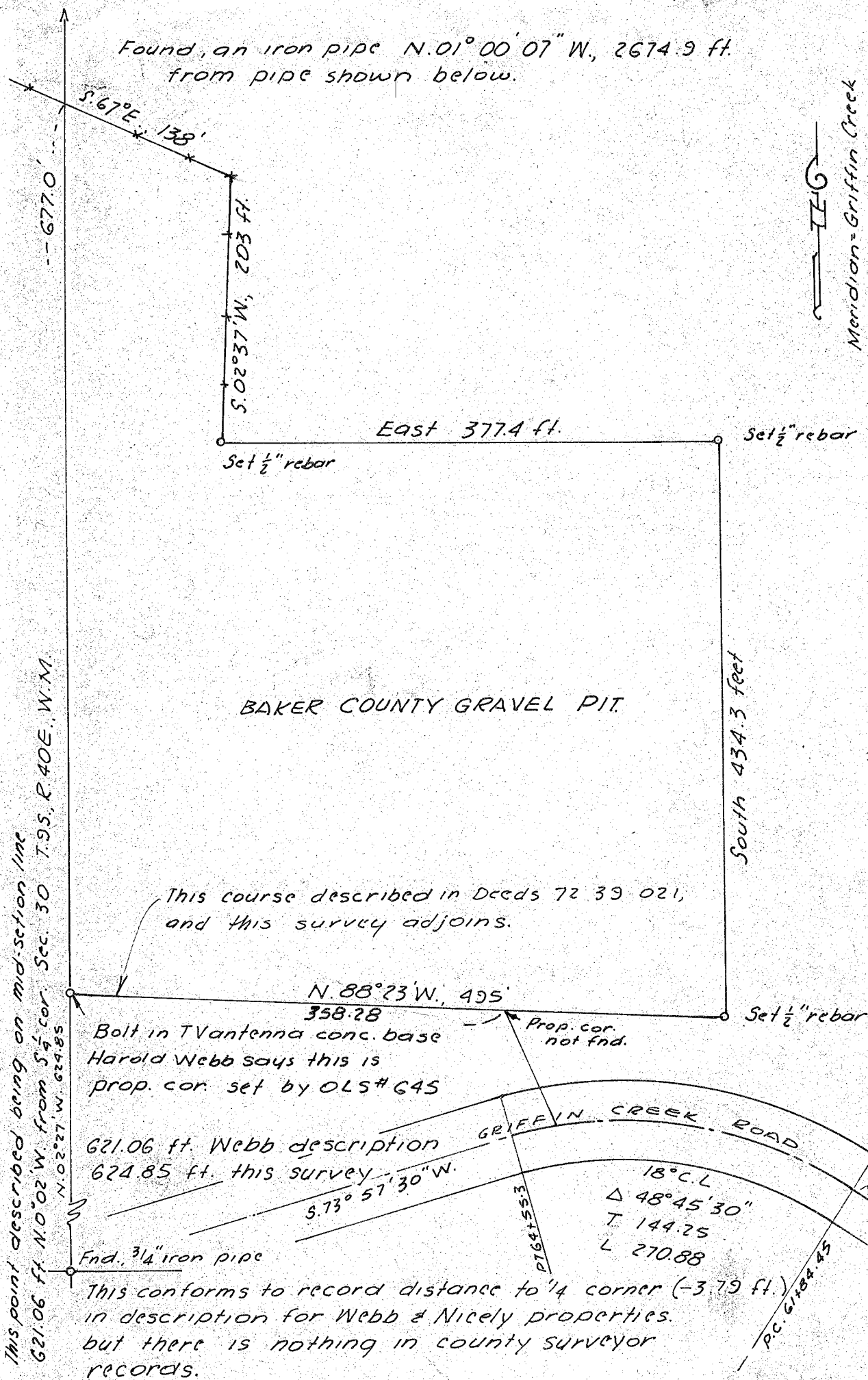


Found, an iron pipe N.01°00'07" W, 2674.9 ft.
from pipe shown below.



Meridian = Griffin Creek
Road Survey of 1970

This point described being on mid-section line
621.06 ft. N.0°02'W from S 1/4 cor. Sec. 30 T.9S. R.40E. W.M.

This course described in Deeds 72 39 021,
and this survey adjoins.

Bolt in TV antenna conc. base
Harold Webb says this is
prop. cor. set by OLS# 645

621.06 ft. Webb description
624.85 ft. this survey

Fnd. 3/4" iron pipe

This conforms to record distance to '14 corner (-3.79 ft.)
in description for Webb & Nicely properties.
but there is nothing in county surveyor
records.

MAP OF SURVEY
FOR
BAKER COUNTY

FILED 6-10-75
BAKER COUNTY SURVEYOR
SURVEY NO. 9-40-19

Preliminary Survey 6-20-73
Monuments set 6-10-75
See Map Co Assessor Records No. 1-67,
shown on Detail Sheet No. 2 -9-40

