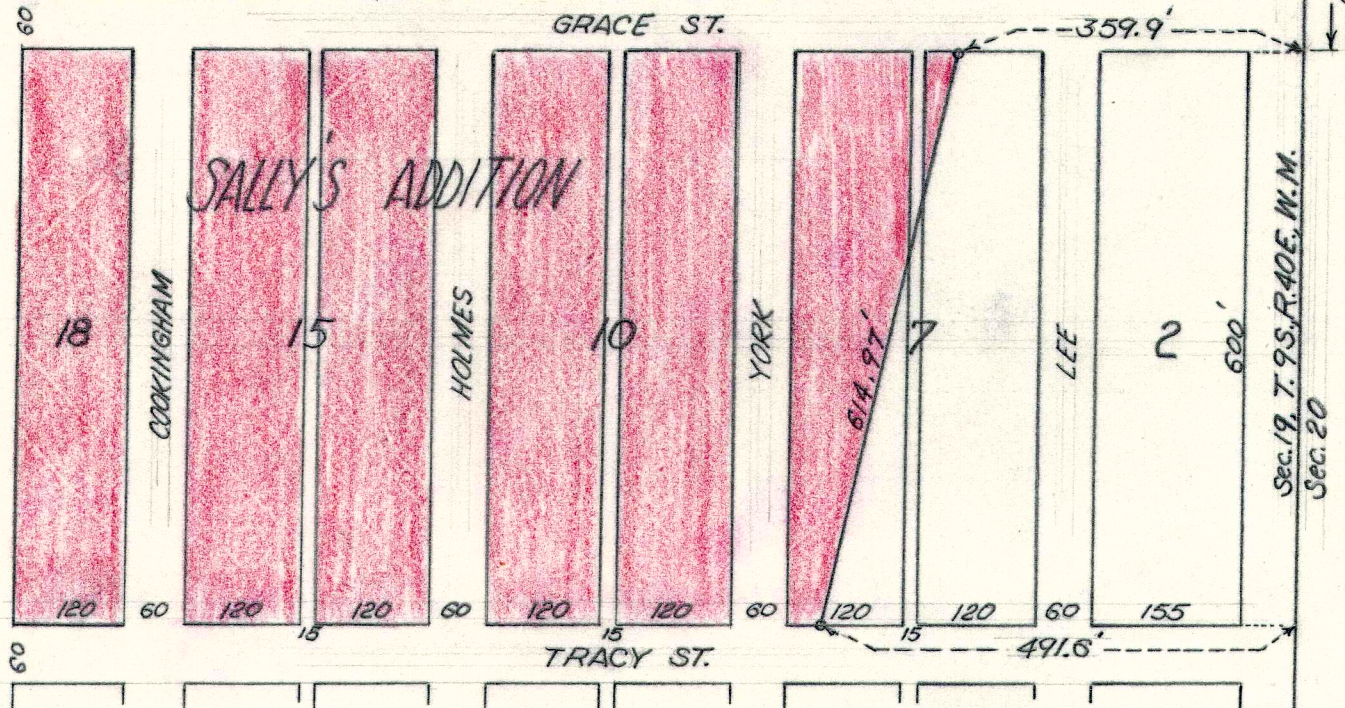
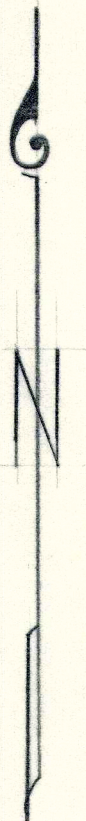


Blocks 10, 15 & 18 of Sally's Addition to Baker, Oregon, and that part of Block 7, Sally's Addition, lying West of a line which begins on the North line of said Block 7, 359.9 ft. West of the line between Sections 19 and 20, T. 9 S., R. 40 E., W. M., and ends on the South line of said Block 7, 491.6 feet West of the said section line.



BOOK 1 OF PLATS, PAGE 34

FILED March 1, 1954
 BAKER COUNTY SURVEYOR
 SURVEY NO. 9-40-10 13L

SKETCH OF SURVEY

February 25 & 26, 1954
 SCALE 1" = 200'

