

T. 9S., R 40E., W.M.

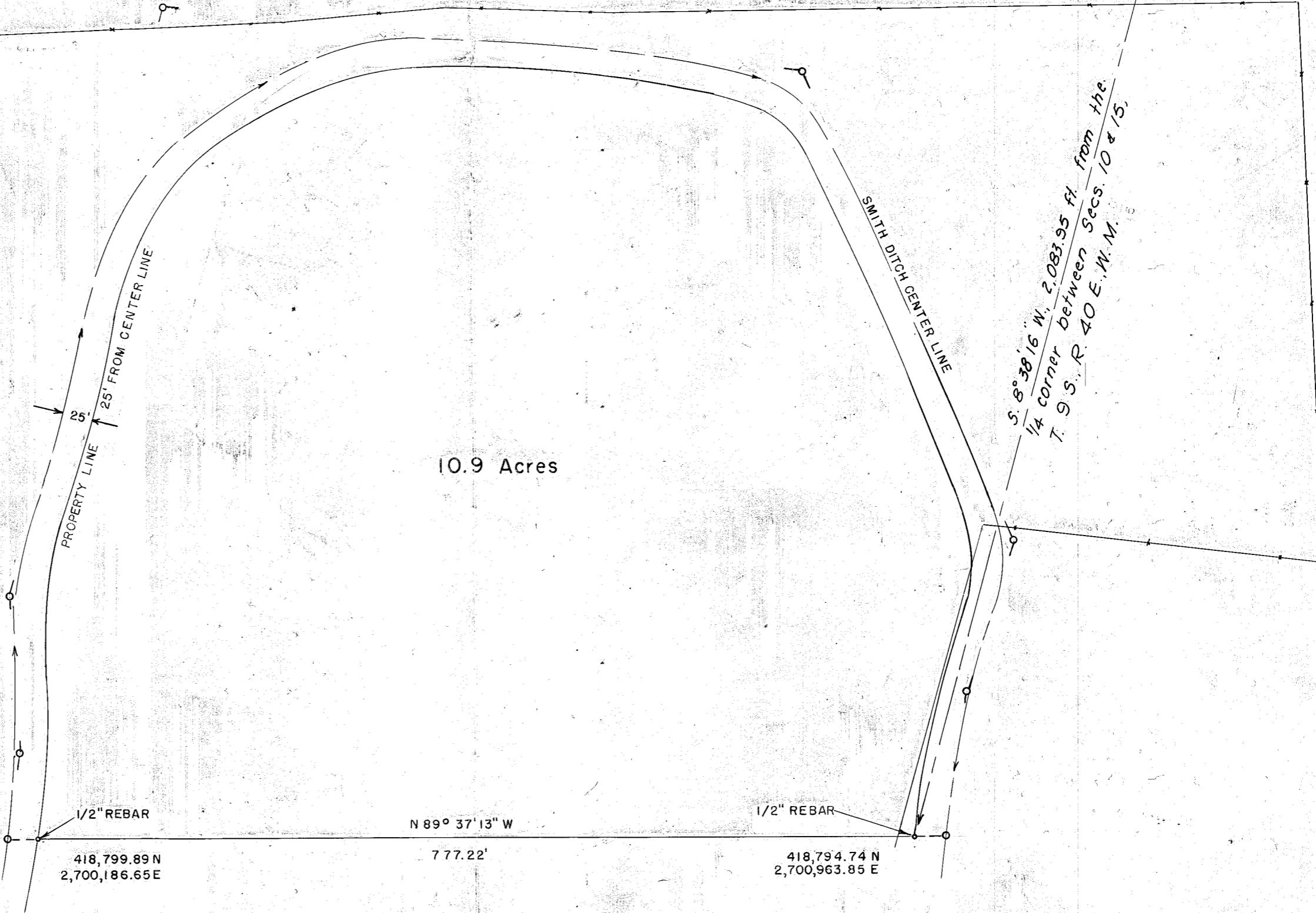
419,504.90 N.
2,700,012.72 E.

1/4 COR. 420,855.06 N.
2,701,276.83 E.

419,531.76 N.
2,701,310.43 E.



MERIDIAN BASIS IS CITY 1970 SURVEY



10.9 Acres

419,035.70 N.
2,701,328.72 E.

LOCATION SKETCH

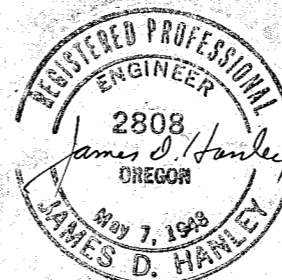
| | |
|----|----|
| 9 | 10 |
| 16 | 15 |

1/2" REBAR
418,799.89 N
2,700,186.65 E

N 89° 37' 13" W
777.22'

1/2" REBAR
418,794.74 N
2,700,963.85 E

TRACT SURVEY
Surveyed for Conrad Allen
MAY 15 — JUNE 22, 1972
SCALE: 1" = 100'



FILED June 30, 1972
BAKER COUNTY SURVEYOR
SURVEY NO. 9-40 10 A