

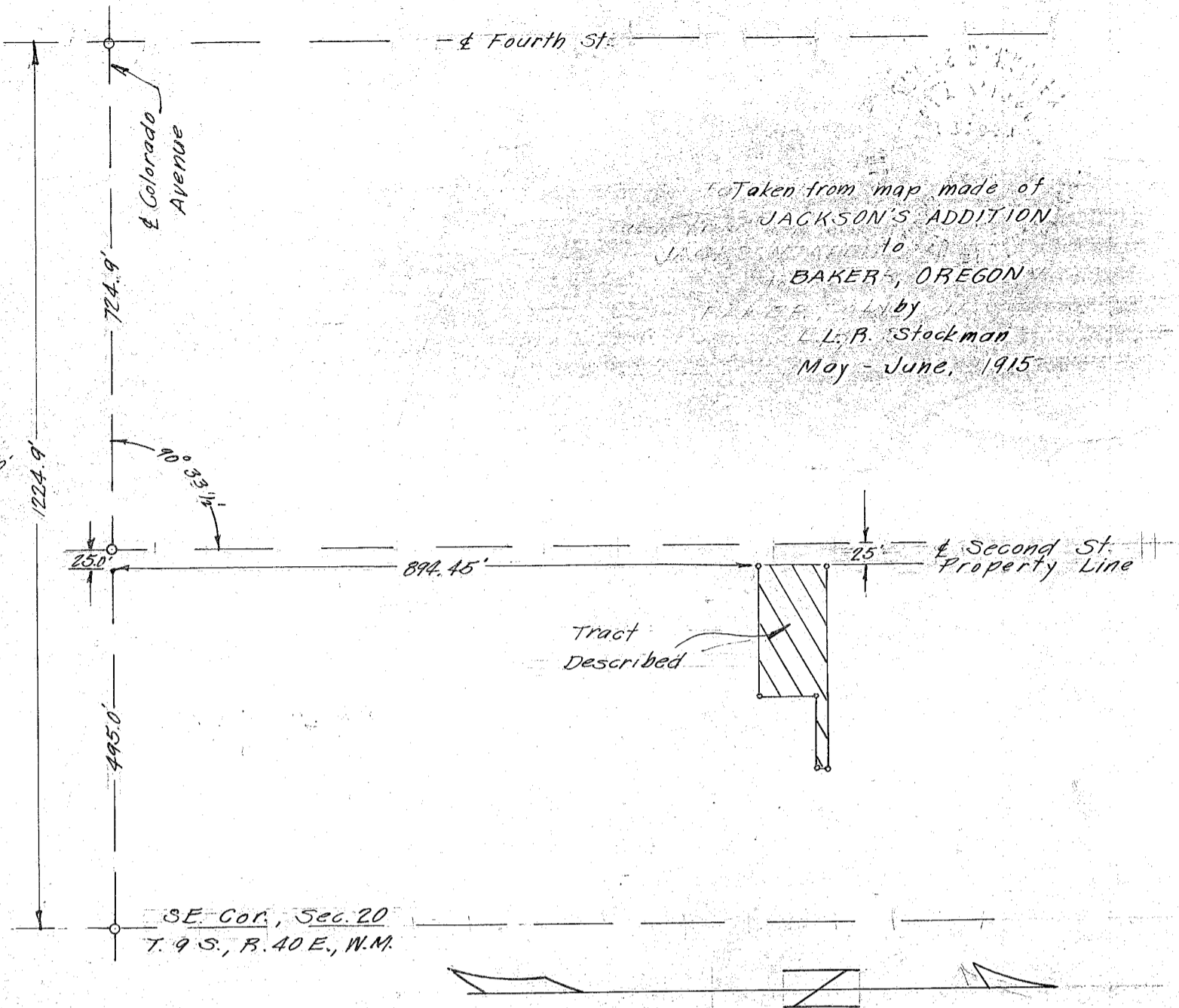
FILED
LIED

— & Fourth St. —

& Colorado Avenue

To Taken from map made of
JACKSON'S ADDITION
to
BAKER, OREGON
by
L. L. B. Stockman
May - June, 1915

Scale: 1" = 200'



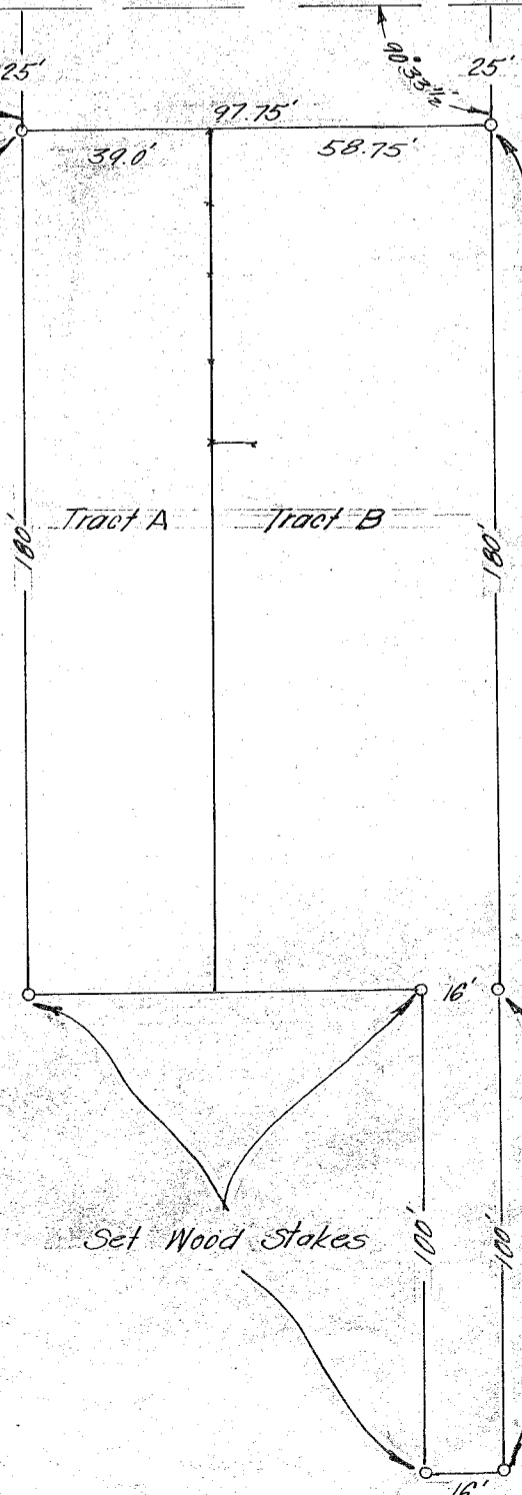
— & Second St. —

Set Iron Pin

Cut mark in Conc. walk
1.3' W. of Cor. #
Set R.B. spike at Cor.

SURVEY IN
JACKSON'S ADDITION
to
BAKER, OREGON
July 25, 1952

Scale: 1" = 40'



FILED
BAKER COUNTY SURVEYOR
SURVEY NO. 9-40-6 B

