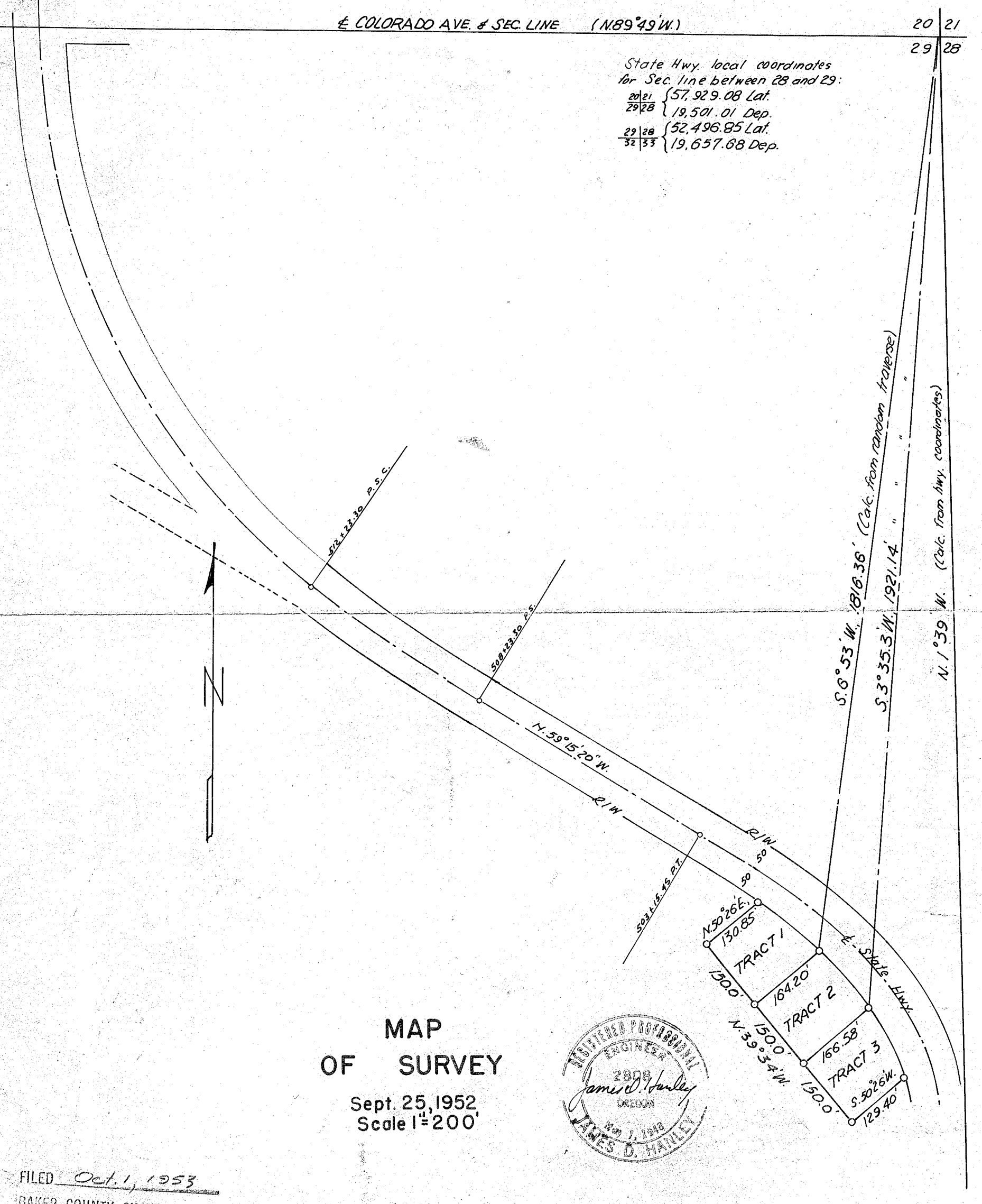


E COLORADO AVE. & SEC. LINE (N89°49'W.)

20 21  
29 28

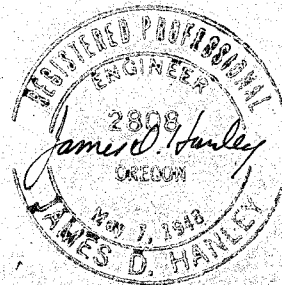
State Hwy. local coordinates  
for Sec. line between 28 and 29:

20/21	{	57,929.08 Lat.
29/28	{	19,501.01 Dep.
29/28	{	52,496.85 Lat.
32/33	{	19,657.68 Dep.



MAP  
OF SURVEY

Sept. 25, 1952  
Scale 1"=200'



FILED Oct. 1, 1953  
BAKER COUNTY SURVEYOR  
SURVEY NO. G-A

o = Set 3/4 inch pins  
3 De Roest Tracts