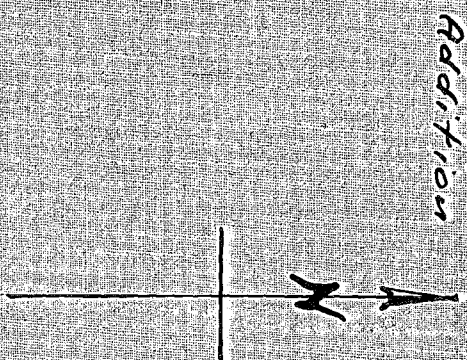


DEWEY AVE. MAIN ST.

MAP SHOWING MOORE & WILSON  
TRACT IN BLOCK "A" PLACE'S ADD.  
CITY OF BAKER, BAKER CO., OREGON.  
Being parts of Lots 1, 2, 3 & 4 of Block "A"  
Situate in NW 1/4 of NW 1/4, Sec. 21, T. 9 S., R. 40 E.,  
N.M. Oregon.  
Surreyed March 30, 1926. Scale: 1" = 60'



Block "B"  
Place's  
Addition

RESORT  
185.0'

BRIDGE

AUBURN AVE.

PLACE'S ADD.

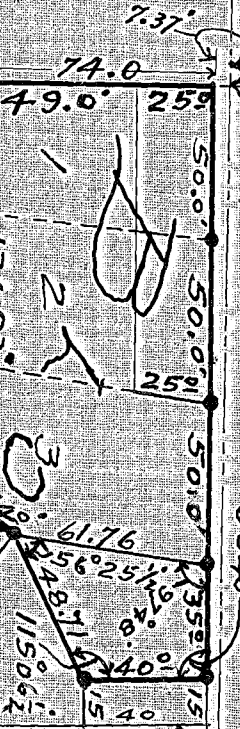
POMPER RIVER

Filed April 30 1926  
Baker Co. Oregon  
Surrey 9-40-2 BC

Phil H. Anderson



Iron  
Monument  
Marked  
its  
pos.



Sec. 17, 18, 19, 20, 21, 22  
for Secs. 16, 17, 20, 21, 22  
T. 9 S., R. 40 E.,  
N.M. Oregon.

100 ft.  
42.5' 42.5'  
185.0'

10.35'

90°40'

17.62'

10.35'