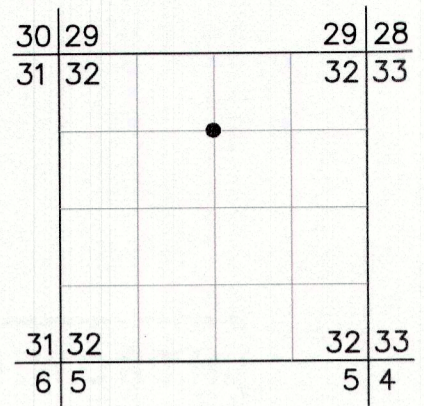


RECORD OF LAND CORNER MONUMENTATION

CENTER-NORTH 1/16 CORNER SECTION 32, T. 9 S., R. 39 E., W.M.

ORIGINALLY ESTABLISHED BY: NOT PREVIOUSLY ESTABLISHED



ORIGINAL DESCRIPTION: N/A

EVIDENCE FOUND: NONE

DESCRIPTION OF MONUMENTS AND ACCESSORIES SET AND METHODS USED:

At the corner point, I set a standard USFS 2½"x30" aluminum pipe with attached ¾" aluminum cap, 28" in the ground. Raised a 2 ½ ft. diameter mound of stone around the monument to base of cap. Cap is marked as shown below.

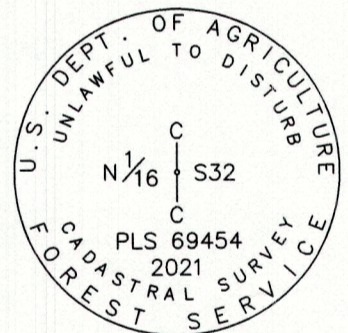
From which, I SET THE FOLLOWING REFERENCE MONUMENT:

- ▶ A 5/8"x30" iron pin bears N.62°50'E., 16.48 ft. with attached 2 ½" diameter aluminum cap marked "RP 1 2021 PLS 69454"

I also SCRIBE A NEW BEARING TREE:

- ▶ An 8" dbh white fir bears N.59°01'W., 16.52 ft. marked CN1/16 in upper blaze and BT in lower blaze.

CORNER MONUMENT MARKED:



Painted a 6 inch red band around the bearing tree, and also painted the blaze red. Attached USFS 54-3 and 54-9 signs to the bearing tree.

Distance to BT measured to a 60d nail driven in the side-center at the root crown of the tree, with an attached 1½" brass washer stamped "PLS 69454". Accessories were measured with a total station.

Set aluminum guard posts with USFS signs 54-2 and 54-9 attached, north and west of corner.

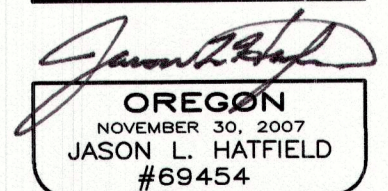
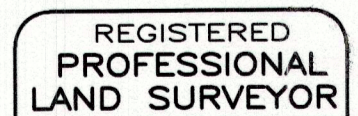
RESTORATION BY, STAMP AND DATE:

Work Performed June 8, 2021 by:

Jason L. Hatfield, PLS
Robert C. Moyers, PLS
Daniel B. Lee

USDA FOREST SERVICE
NORTHEAST OREGON LANDS ZONE
1550 Dewey Avenue, Suite A
Baker City, OR 97814
(541) 523-1337

FILED July 21, 2021
BAKER COUNTY SURVEYOR
SURVEY NO. 9-39-316



EXPIRES: 6/30/2023