

# RECORD OF LAND CORNER MONUMENTATION

SOUTH 1/16 CORNER SECTION 29, T. 9 S., R. 39 E., W.M.

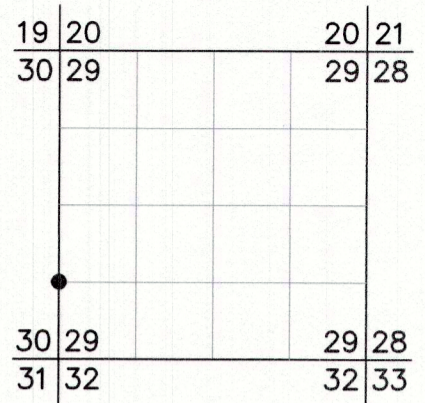
ORIGINALLY ESTABLISHED BY: Gerald E. Chittick and John H. Nelson,  
B.L.M. Cadastral Surveyors

GROUP NUMBER: 751

APPROVED: July 9, 1971

**SUBSEQUENT SURVEYS:**

1. Survey by James D. Hanley, PLS, recorded as Baker County Survey No. 9-39-200, filed June 23, 1986
2. Certified Record of Land Corner Monumentation by James D. Hanley, PLS, recorded as Baker County Survey No. 9-39-136, filed February 10, 1986



**ORIGINAL DESCRIPTION:** Set an iron post, 28 ins. long, 2½ ins. diam., 22 ins. in the ground, and in a mound of stone, 3½ ft. base, to top, with brass cap mkd. from which A fir, 8 ins. diam., bears N. 89° E., 12 lks. dist., mkd. S 1/16 S29 BT. A pine, 10 ins. diam., bears N. 87° W., 32 lks. dist., mkd. S 1/16 S30 BT

**SURVEY NO. 9-39-200 DESCRIPTION:** Map contains a note at the corner "BLM MONUMENT DESTROYED DUE TO ROAD CONST."

**SURVEY NO. 9-39-136 DESCRIPTION:** The monument and the Fir Bearing tree have been destroyed by logging activity. Description of corner evidence found: A P. Pine, 14 ins. dia.,.....mkd. S 1/16 S30 BT. Set a steel fence post near the corner location and attached a 54-9 USFS sign.

**EVIDENCE FOUND:** Found the steel fence post with sign attached, set near the corner position. Also found a 23" dbh ponderosa pine with healed blaze. The bearing tree also had a BLM BT tag and Hanley's BT tag attached. Found dead and down remains of the fir bearing tree lying 20 feet South (downhill). I determined the position of the 1/16 corner at record bearing and distance from the remaining bearing tree.

**DESCRIPTION OF MONUMENTS AND ACCESSORIES SET AND METHODS USED:**  
At the corner point, I set a 5/8"x36" iron pin 36" in the ground with attached 3¼" USFS brass cap. Surrounded the pin with a 1 ft. diameter collar of stone. Cap is marked as shown.

From which, I SET A NEW REFERENCE POINT:

- ▶ A 5/8"x36" iron pin set flush with the ground, bears N.34°01'E., 24.28 ft., with attached 1½" aluminum cap marked as shown.

Also from which, THE ORIGINAL BEARING TREE:

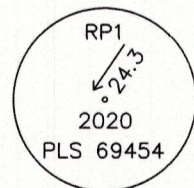
- ▶ A 23" dbh ponderosa pine bears N.87°W., 21.12 ft. with healed blaze.

Painted a 6 inch red band around the bearing tree, and also painted the blaze red. Attached USFS 54-3 and 54-9 signs to the bearing tree. Distance to tree measured with a steel tape, measuring to a 40d nail driven in the side-center at the root crown of the tree. Used RTK GPS to measure the bearing to tree and to measure the bearing and distance to the reference point. Reset Hanley's fence post with USFS 54-9 sign attached, 3 feet north of corner.

CORNER MONUMENT MARKED:



REFERENCE POINT MARKED:



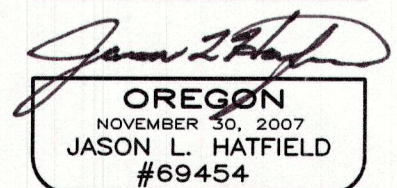
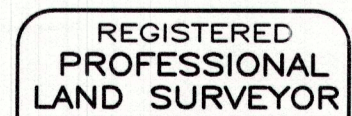
**RESTORATION BY, STAMP AND DATE:**

Work Performed October 15, 2020 by:

Jason L. Hatfield, PLS  
Toribio J. Quinones

FILED December 9, 2020  
BAKER COUNTY SURVEYOR  
SURVEY NO. 9-39-313

USDA FOREST SERVICE  
NORTHEAST OREGON LANDS ZONE  
1550 Dewey Avenue, Suite A  
Baker City, OR 97814  
(541) 523-1337



EXPIRES: 6/30/2021