

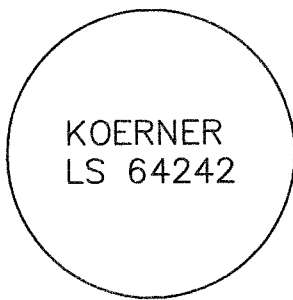
PUBLIC LAND SURVEY CORNER RECORD  
BAKER COUNTY, OREGON

Township 9S, Range 39E, Section 10, Corner CENTER 1/4

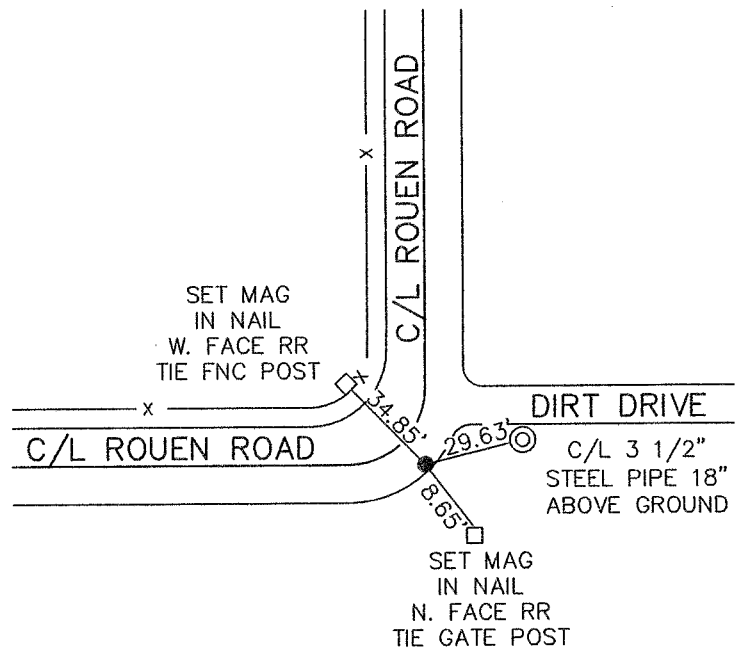
CORNER EVIDENCE FOUND (INCLUDING ACCESSORIES): \_\_\_\_\_  
 NO EVIDENCE OF CORNER FOUND OR SET. ESTABLISHED THIS CORNER BY BEARING/  
 BEARING INTERSECTION METHOD WITH THE NORTH 1/4 CORNER, SOUTH 1/4  
 CORNER, EAST 1/4 CORNER & THE WEST 1/4 CORNER. CORNER FALLS ON THE  
 PROLONGATION OF THE CENTERLINES OF ROUEN ROAD.

Description of New Monument, Accessories, or Changes: \_\_\_\_\_  
 SET 5/8" IRON PIN WITH PLASTIC CAP AS SHOWN IN DIAGRAM BELOW.

Monument Detail



Sketch of General Area and Accessories



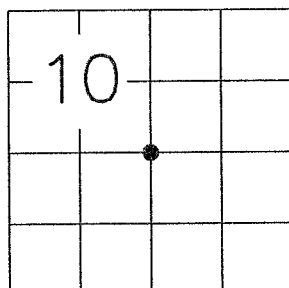
Stamp

**REGISTERED PROFESSIONAL LAND SURVEYOR**  
*Lawrence H. Koerner*  
**OREGON**  
 JAN. 29, 2009  
**LAWRENCE H. KOERNER**  
 64242  
 7/20/10  
**EXPIRATION DATE 5/31/10**

Bus. Name and Address

KOERNER LAND SURVEYING  
& PLANNING  
2963 FIELDSTREAM  
MERIDIAN, IDAHO 83646  
 Date of Field Work:  
JUNE 21, 2010

Diagram



For County Use Only

Received \_\_\_\_\_  
 Filed July 27, 2010  
 Sur. No. 9-39-290  
 Dwg. No. \_\_\_\_\_  
 Index. No. \_\_\_\_\_