

CIL POCAHONTAS ROAD

MAJOR PARTITION PLAT No. P2010-009

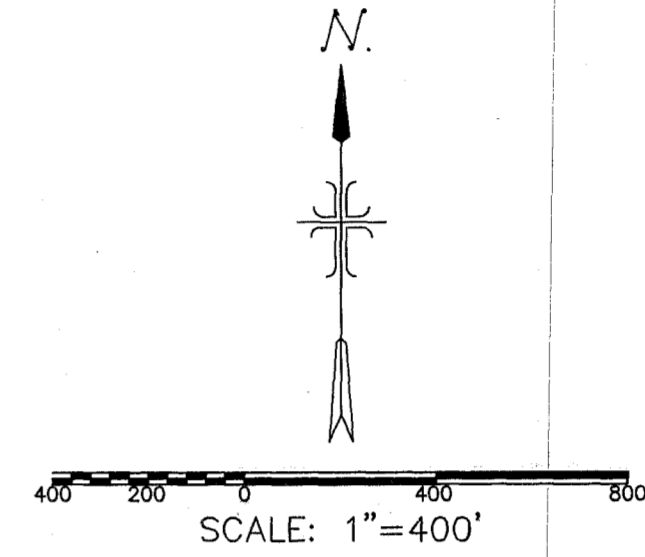
A Portion of The West 1/2, NW 1/4 of Section 11, & The East 1/2, NE 1/4 of Section 10, Township 9 South, Range 39 East of the Willamette Meridian, Baker County, Oregon Survey Completed June 21, 2010

LOCATION ESTABLISHED BY DOUBLE PROPORTION FROM ROAD CENTERLINES N, S, E & W CORNER RECORD TO BE FILED

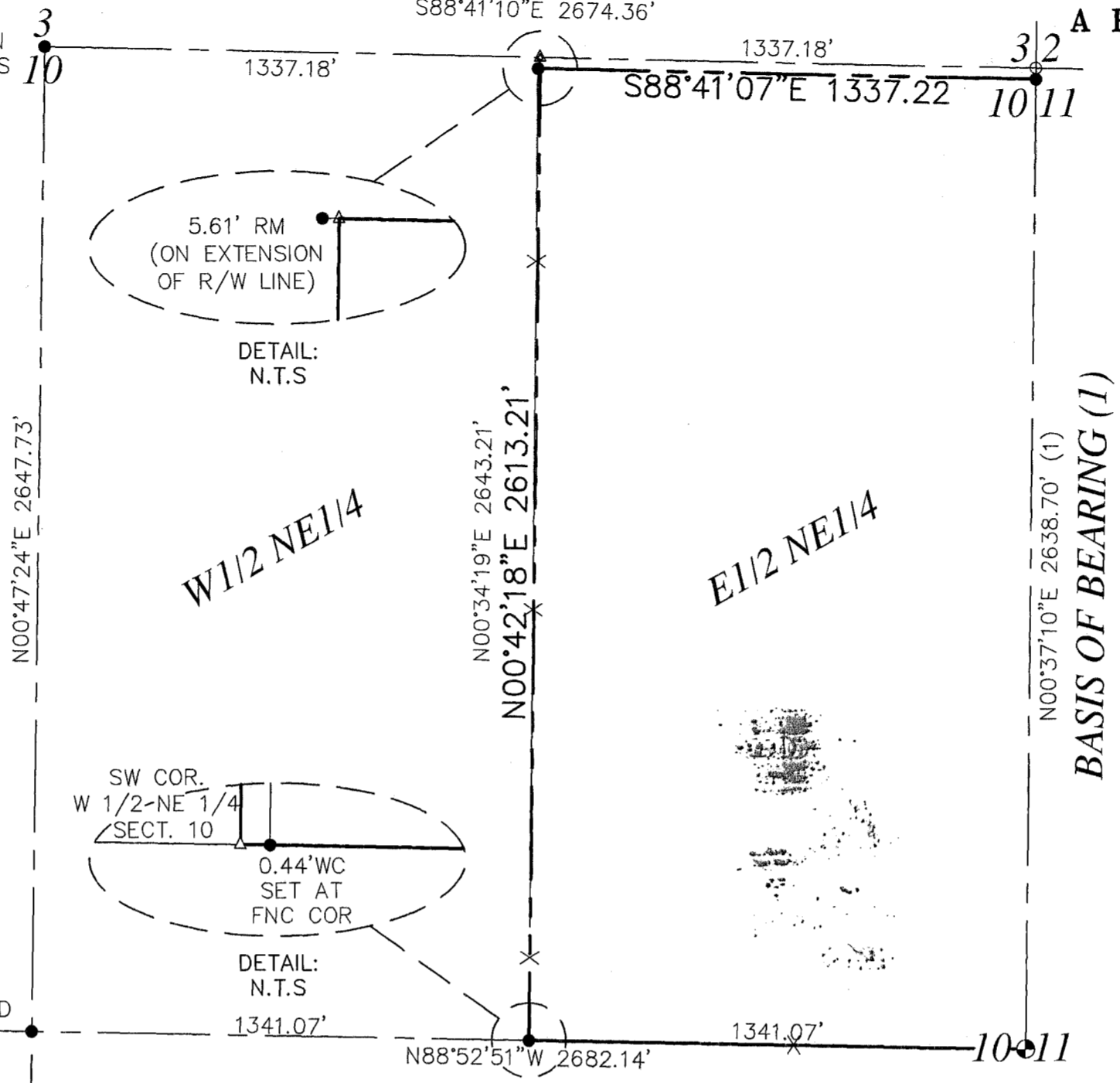
I, LAWRENCE H. KOERNER, CERTIFY THAT THIS IS AN EXACT REPRODUCTION OF THE ORIGINAL.

Lawrence H. Koerner
LAWRENCE H. KOERNER

REGISTERED PROFESSIONAL LAND SURVEYOR
Lawrence H. Koerner
OREGON JAN. 22, 2001
LAWRENCE H. KOERNER 04242
7/20/10
EXPIRATION DATE: 0/3/11



- LEGEND**
- Boundary Line
 - - - Section Line
 - x- Existing Fence
 - ⊕ Found Brass Cap
 - ⊞ Found Aluminum Cap
 - Found 5/8" Iron Pin
 - Set 5/8" Iron Pin w/Plastic Cap "Koerner LS 64242"
 - △ Calculated Point
 - RM Reference Monument
 - WC Witness Corner



9-10 CORNER RECORD 9-39-255
N88°52'51"W 2646.99'
C 1/4 CORNER SET BY DOUBLE PROPORTION CORNER RECORD TO BE FILED
1341.07' N88°52'51"W 2682.14'
10-11

LINE TABLE

LINE	BEARING	DISTANCE
L1	S01°47'33"E	181.60'
L2	N90°00'00"W	359.12'
L3	S01°47'01"E	194.52'
L4	N90°00'00"E	359.15'
L5	S01°47'33"E	34.90'
L6	S63°06'45"W	92.93'
L7	S53°46'55"W	37.89'
L8	S64°29'45"W	121.34'
L9	S36°35'16"W	51.21'
L10	S05°26'43"E	163.78'
L11	N90°00'00"E	11.23'
L12	S00°00'00"E	250.08'
L13	N90°00'00"E	243.05'
L14	S18°52'29"W	442.95'
L15	S90°00'00"W	208.00'
L16	S18°52'29"W	203.77'
L17	S50°01'31"W	83.87'
L18	N66°06'26"W	97.14'
L19	N69°31'34"E	14.68'
L20	S69°31'34"W	121.74'
L21	S09°28'16"W	88.46'
L22	S72°57'51"W	107.28'
L23	N10°10'45"W	34.89'
L24	N10°10'45"W	308.64'
L25	N80°27'42"E	138.84'
L26	N88°50'02"W	31.49'
L27	N00°42'18"W	29.98'

CURVE TABLE

CURVE	RADIUS	DELTA ANGLE	LENGTH	TANGENT	CHORD	CHORD BEARING
C1	253.00'	93°34'37"	413.20'	269.31'	368.79'	S45°58'36"E
C2	283.00'	93°34'37"	462.20'	301.24'	412.51'	S45°58'36"E
C3	535.98'	16°41'20"	156.12'	78.62'	155.57'	S10°53'04"W
C4	115.00'	63°52'03"	128.19'	71.68'	121.66'	S81°57'33"W
C5	822.73'	12°21'21"	177.42'	89.06'	177.08'	N71°20'31"W
C6	130.00'	30°12'27"	68.54'	35.09'	67.75'	S87°22'35"W
C7	165.00'	60°03'18"	172.95'	95.37'	165.14'	S39°29'55"W
C8	118.00'	63°29'34"	130.76'	73.01'	124.17'	S41°13'04"W
C9	60.00'	96°51'24"	101.43'	67.65'	89.78'	N58°36'27"W
C10	565.98'	21°06'01"	208.43'	105.41'	207.26'	S08°40'44"W

NARRATIVE

I WAS EMPLOYED BY BETTY GREEN TO COMPLETE THE SURVEY REQUIREMENTS OF THIS APPROVED MAJOR PARTITION PLAT. THE RIGHT OF WAYS FOR POCAHONTAS ROAD AND WASHINGTON GULCH ROAD WERE CREATED FROM LOCATING THE CENTERLINES OF BOTH ROADS AND OFFSETTING THEM 30'. THE BOUNDARIES AROUND THE EXCEPTIONS PARCELS (LISTED IN BARGAIN AND SALE DEED B05 26 0370, 0371 & 0372) WERE CREATED FROM THE RECORD INFORMATION IN SAID DEEDS, AND FROM OCCUPATIONS LINES LOCATED IN THE FIELD. THE CENTER QUARTER CORNER FOR SECTION 10 WAS ESTABLISHED BY DOUBLE PROPORTION FROM THE NORTH, SOUTH, EAST & WEST QUARTER CORNERS. THE SOUTH, WEST & EAST QUARTER CORNERS FOR SECTION 10 WERE LOCATED IN THE FIELD. I SET THE NORTH QUARTER CORNER BY DOUBLE PROPORTION BY THE LOCATING OF THE CENTERLINE OF POCAHONTAS ROAD EAST & WEST OF THE CORNER, AND THE CENTERLINE OF ROUEN ROAD RUNNING SOUTH & OLD WING ROAD RUNNING NORTH OF THE CORNER. I ESTABLISHED THE WEST BOUNDARY LINE OF THIS SURVEY ON THE WESTERLY BOUNDARY LINE OF THE EAST 1/2 NE 1/4 OF SECTION 10, AFTER ESTABLISHING THE NORTH-SOUTH CENTER OF SECTION LINE OF SAID SECTION 10.

10-15 CORNER RECORD 9-39-233

Koerner Land Surveying & Planning
2963 W. Fieldstream Dr.
Meridian, Idaho
208-830-4168



PREPARATION DATE: 7/20/2010 8:28:45 AM

FILED July 27, 2010
BAKER COUNTY SURVEYOR
SURVEY NO. 9-39-288