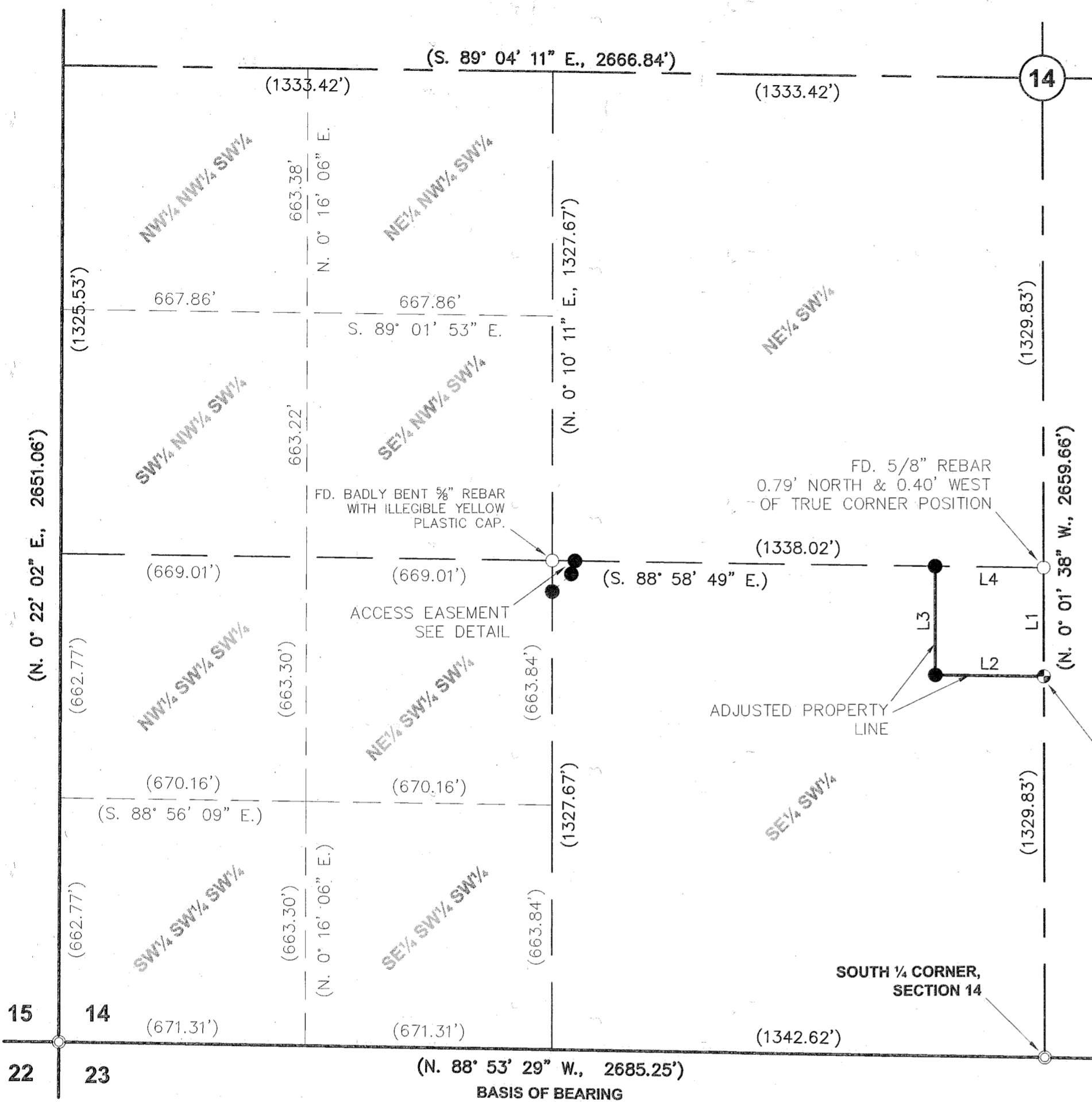


T. 9 S., R. 39 E., W.M.



**BASIS OF BEARING**  
 BA. CO. SURV. NO. 9-39-278  
 SOUTH LINE OF THE SW 1/4 OF  
 SEC. 14 BEARS N. 88° 53' 29" W.

**SCALE: 1" = 300'**

CORNER POSITION LANDS ON LARGE BOULDER. SET TWO 5/8" REBAR WITH ORANGE PLASTIC CAP MARKED "REFERENCE MONUMENT". REFERENCE MONUMENT #1 BEARS S. 18° 41' 59" W., 4.83' AND REFERENCE MONUMENT #2 BEARS S. 87° 54' 36" E., 4.83' FROM THE TRUE CORNER POSITION.

**LINE TABLE**

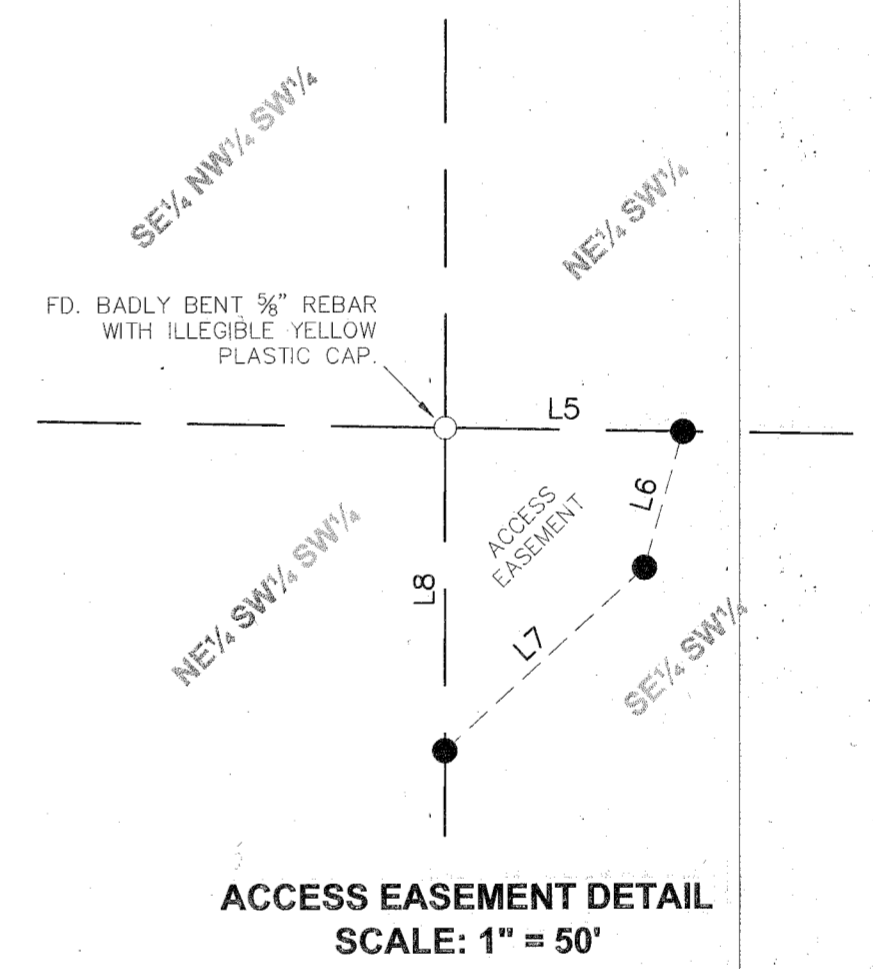
LINE	BEARING	DISTANCE
L1	S. 0° 01' 38" E.	295.16'
L2	N. 88° 58' 49" W.	295.16'
L3	N. 0° 01' 38" W.	295.16'
L4	S. 88° 58' 49" E.	295.16'
L5	S. 88° 58' 49" E.	62.00'
L6	S. 15° 54' 21" W.	36.80'
L7	S. 47° 40' 09" W.	70.55'
L8	N. 0° 10' 11" E.	84.00'

**NARRATIVE**

The purpose of this survey for Debra Douglass is to monument with proper monumentation the corners of a property line adjustment as shown hereon. The corners of an access easement across the Northwest corner of the Southeast quarter of the Southwest quarter were also monumented as shown hereon. Monumentation and control was recovered from Baker County Survey No. 9-39-278 and held as the basis of bearing for this survey. Said Survey No. 9-39-278 also provided the proper subdivision of Section 14.

**REFERENCES**

- Baker County Survey No. 9-39-28.
- Baker County Survey No. 9-39-29.
- Baker County Survey No. 9-39-33.
- Baker County Survey No. 9-39-36.
- Baker County Survey No. 9-39-37.
- Baker County Survey No. 9-39-69.
- Baker County Survey No. 9-39-196.
- Baker County Survey No. 9-39-250.
- Baker County Survey No. 9-39-255.
- Baker County Survey No. 9-39-259.
- Baker County Survey No. 9-39-278.
- Baker County Survey No. 9-39-279.



**LEGEND**

- Set 5/8" rebar with plastic cap marked "HANLEY ENGR. PLS 1817".
- ⊙ Set reference monuments as noted.
- ⊙ Found 2 1/2" brass cap monument.
- Found monument as noted.
- ( ) Record Data per Ba. Co. Surv. No. 9-39-278.

**MAP OF SURVEY  
 FOR PROPERTY LINE ADJUSTMENT**

**SECTION 14, T. 9 S., R. 39 E., W.M.**

**BAKER COUNTY, OREGON**

Surveyed June 28 thru July 3, 2006

for Debra Douglass

Scale: 1" = 300'

**HANLEY ENGINEERING, INC.**  
 P.O. BOX 701, 2043 MAIN STREET, BAKER CITY, OREGON 97814 (541) 523-3803

FILED July 5, 2006  
 BAKER COUNTY SURVEYOR  
 SURVEY NO. 9-39-286

REGISTERED  
 PROFESSIONAL  
 LAND SURVEYOR  
 THOMAS J. HANLEY  
 OREGON  
 JULY 13, 1979  
 1817

Renews June 30, 2007