

NORTHWEST CORNER OF SECTION 4  
FOUND R.R. SPIKE SET BY B.L.M.  
SEE BA. CO. SURV. NO. 9-39-273

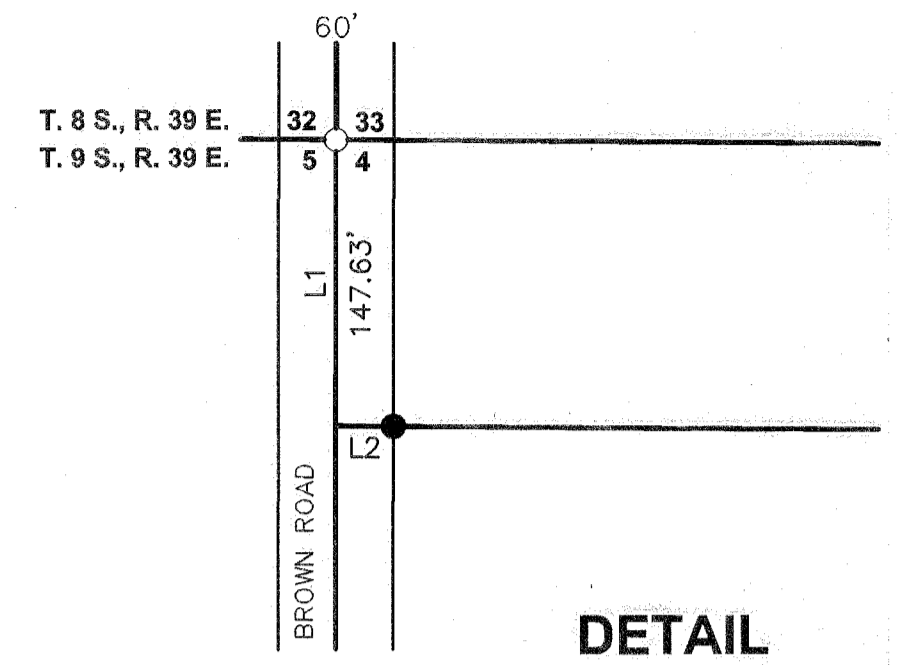
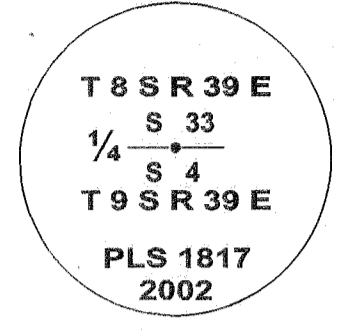
T. 8 S., R. 39 E. 32 33  
T. 9 S., R. 39 E. 5 4

S. 89° 32' 19" E., 2639.62'

S. 89° 32' 20" E., 2610.89'  
(BETWEEN PINS)

147.63'

NORTH 1/4 CORNER OF SECTION 4  
FOUND WAGON SPINDLE (SEE NARRATIVE)  
SET 2 1/2" BRASS CAP MONUMENT  
SEE BA. CO. SURV. NO. 9-39-276.



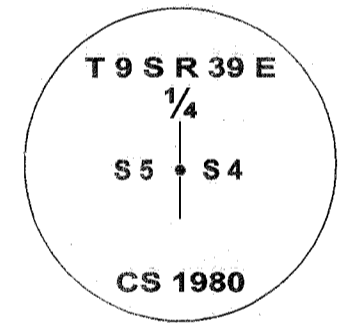
**BASIS OF BEARING**  
BA. CO. PARTITION  
PLAT NO. P1997-009  
WEST LINE OF THE NW 1/4  
BEARS N. 0° 06' 42" E.

SCALE: 1" = 400'

[2613.97']

{N. 0° 06' 42" E.}

WEST 1/4 CORNER OF SECTION 4  
FOUND 2 1/2" BRASS CAP MONUMENT



N. 0° 22' 57" W., 5238.56'

SW 1/4  
SALMON CREEK ROAD (BA. CO. RD. NO. 918)

SOUTH 1/4 CORNER OF SECTION 4  
FOUND 1" (O.D.) PIPE

NOT TIED TO THIS  
SURVEY

**LINE TABLE**

LINE	BEARING	DISTANCE
L1	S. 0°06'42" W.	(147'-7.5")
L2	S. 89°32'20" E.	30.00'
L3	N. 0°22'57" W.	(147'-7.5")

**LEGEND**

- Set 5/8" rebar with plastic cap marked "HANLEY ENGR. PLS 1817".
- ⊕ Set, brass cap monument as noted.
- Found, monument as noted.
- ⊙ Found, brass cap monument as noted.
- ( ) Record Data Per Ba. Co. Deed No. 02 12 0212
- { } Record Data Per Ba. Co. Partition Plat No. P1997-009.
- [ ] Record Data Per Ba. Co. Surv. No. 9-39-273.

**REFERENCES**

- Baker County Survey No. 9-39-6
- Baker County Survey No. 9-39-23
- Baker County Survey No. 9-39-254
- Baker County Survey No. 9-39-255
- Baker County Survey No. 9-39-273
- Baker County Survey No. 8-39-61
- Baker County Partition Plat No. P1997-009
- Baker County Deed No. 02-12-0212

**HANLEY ENGINEERING, INC.**

P.O. BOX 701, 2043 MAIN STREET, BAKER CITY, OREGON 97814 (541) 523-3803

**MAP OF SURVEY**

SECTION 4, T. 9 S., R. 39 E., W.M.

Surveyed April 23 thru 25, 2002

for Jan Phillips  
Scale: 1" = 400'

REGISTERED  
PROFESSIONAL  
LAND SURVEYOR

*Thomas J. Hanley*  
OREGON  
JULY 13, 1979  
THOMAS J. HANLEY  
1817

FILED May 9, 2002  
BAKER COUNTY SURVEYOR  
SURVEY NO. 9-39-277

Renews June 30, 2003