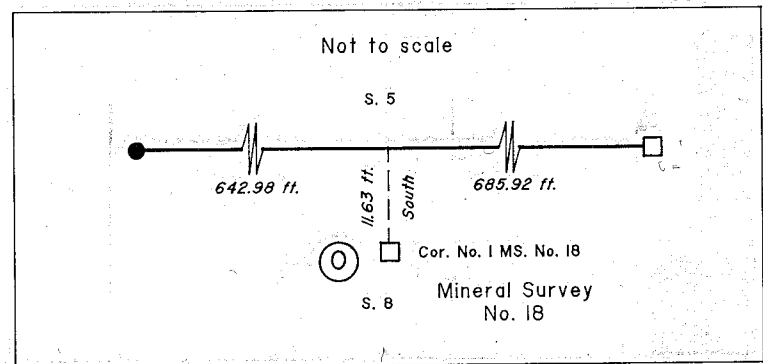
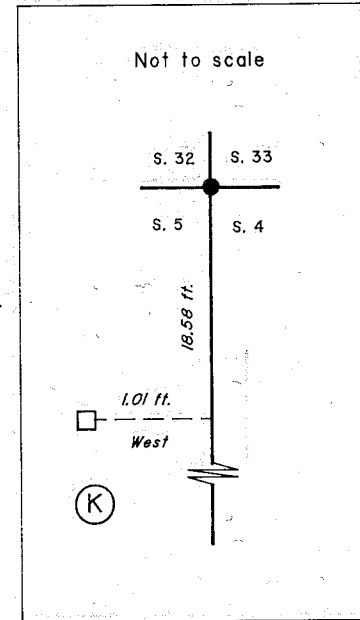
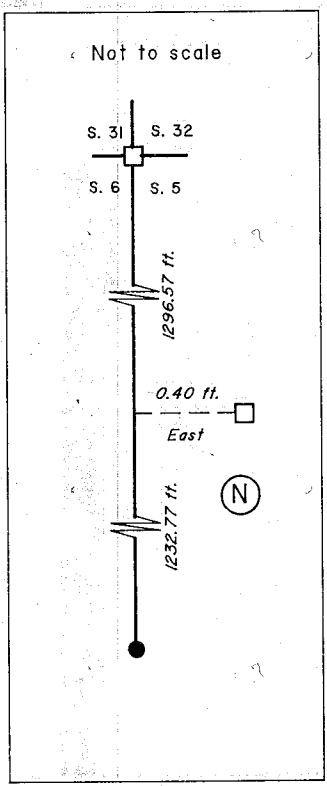
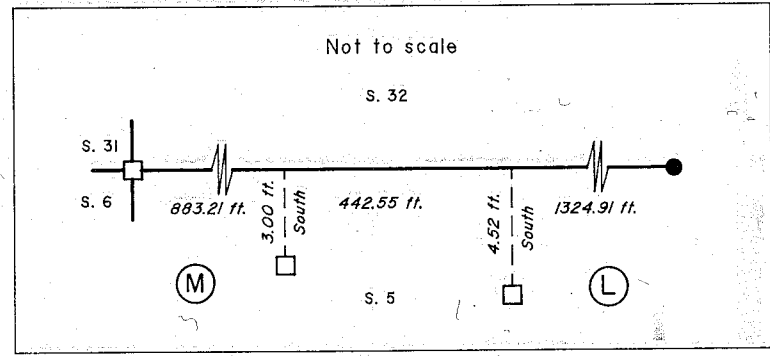
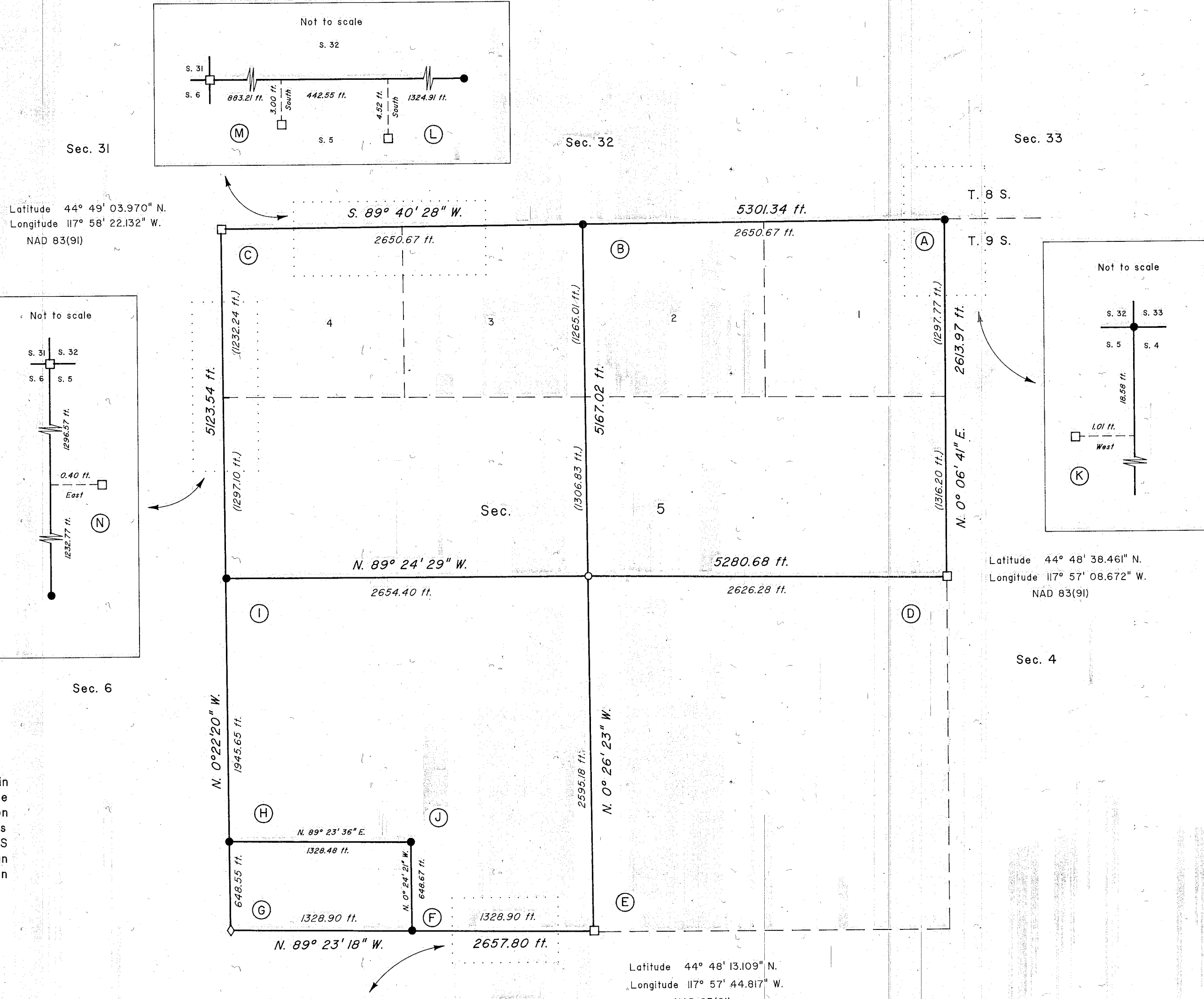


TOWNSHIP 9 SOUTH, RANGE 39 EAST, OF THE WILLAMETTE MERIDIAN, OREGON

SHEET 1 OF 4

DEPENDENT RESURVEY AND SUBDIVISION OF SECTION 5



A history of surveys is contained in the field notes on sheet 2 of 4.

This plat represents a dependent resurvey of a portion of the north boundary and subdivisional lines of T. 9 S., R. 39 E., Willamette Meridian, Oregon, designed to restore the corners in their true original locations according to the best available evidence, and the subdivision of section 5.

The adjusted bearings and distances are reported to the nearest second and 0.01 foot.

The lottings and areas are shown on the plat approved on August 24, 1864.

The survey was executed by James L. Carter, Cadastral Surveyor, beginning September 18, 1995, and completed October 5, 1995, pursuant to Special Instructions dated August 29, 1995, and Assignment Instructions dated September 11, 1995, under Group Number 1792, Oregon.

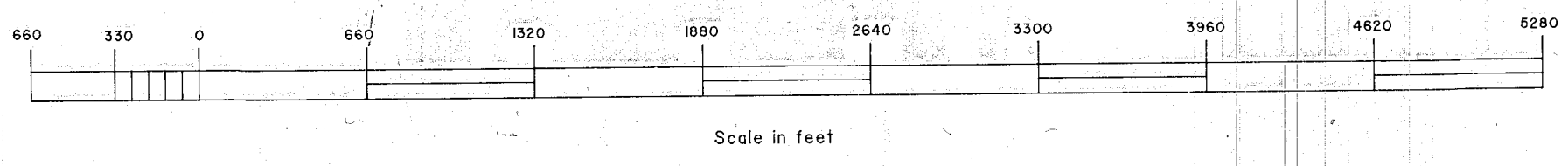
LEGEND

- ◊ Original corner previously remonumented
- ◻ Corner previously established or reestablished
- Corner established this survey; not monumented
- Corner established or reestablished this survey

UNITED STATES DEPARTMENT OF THE INTERIOR
BUREAU OF LAND MANAGEMENT
Portland, Oregon April 27, 1998

The survey represented by this plat, having been correctly executed in accordance with the requirements of law and the regulations of this Bureau, is hereby accepted.

For the Director
Wayne D. Gardner
Chief Cadastral Surveyor of Oregon



FILED September 14, 1998
BAKER COUNTY SURVEYOR
SURVEY NO. 9-39-273