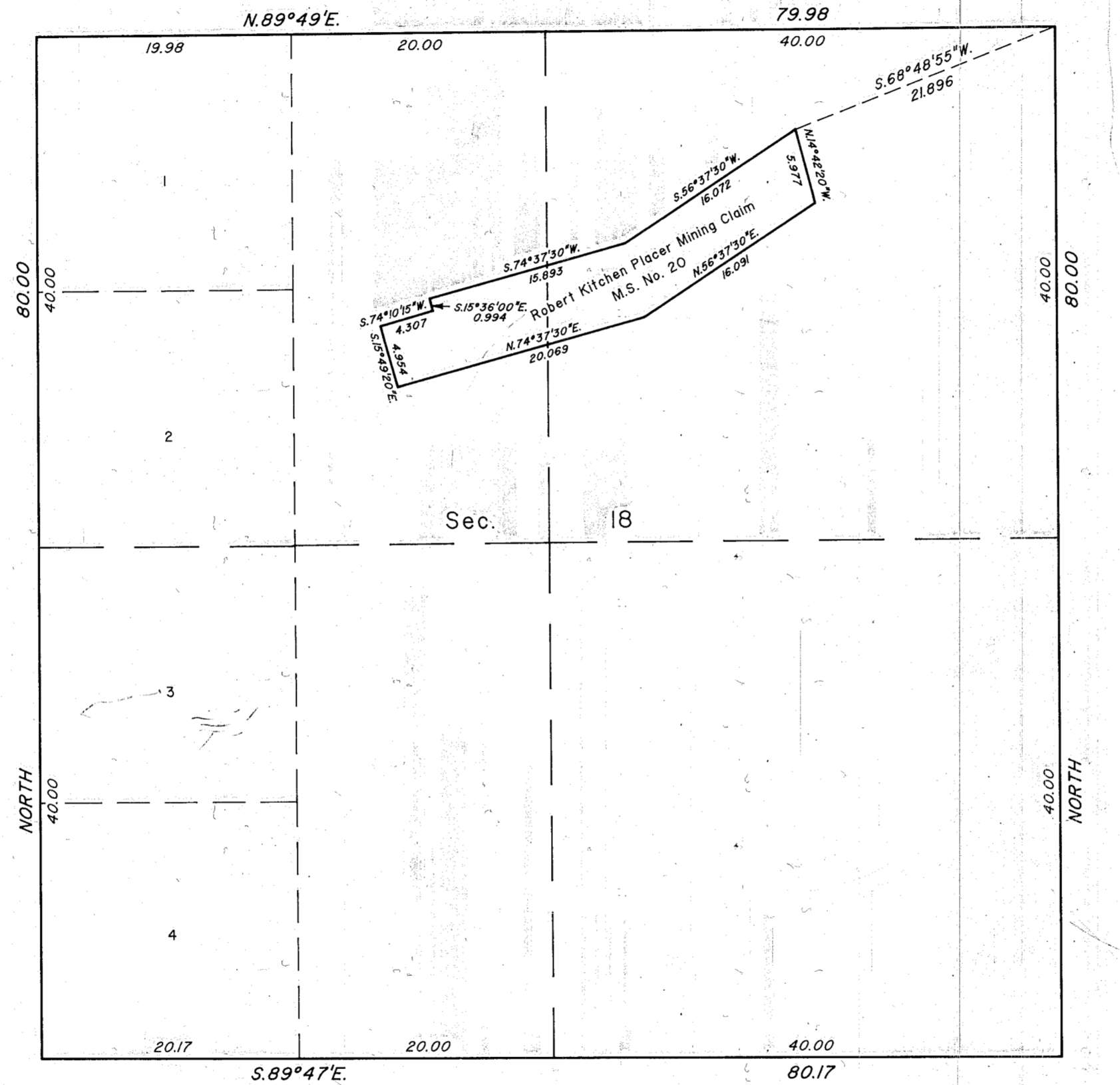


TOWNSHIP 9 SOUTH, RANGE 39 EAST, OF THE WILLAMETTE MERIDIAN, OREGON

AMENDED PLAT OF SECTION 18



This plat was prepared to correct the location of the Robert Kitchen Placer Mining Claim, Mineral Survey No. 20, as shown on the official plat of survey approved August 8, 1873. The bearings reported in the original survey were not corrected for magnetic declination. Therefore, the claim was shown approximately 2000 ft. Southeasterly of its true location. The bearing and distances shown on this plat for the Robert Kitchen Placer are from a 1984 survey by James D. Hanley, Registered Professional Land Surveyor No. 1200, recorded as Grant County Survey No. 9-39-51. The bearings and distances reported for the boundaries of section 18 are as shown on the official plat of survey approved August 24, 1864.

"Note: Hanley's correct registration number is 1206 and his plat is filed in Baker County, see memorandum dated April 2, 1998. File 9630 (OR 957)."

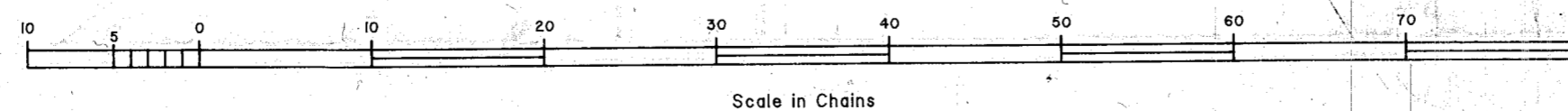
UNITED STATES DEPARTMENT OF THE INTERIOR
BUREAU OF LAND MANAGEMENT

Portland, Oregon October 16, 1997

This plat is based on the official record and the Private Survey record identified above, having been correctly reported in accordance with the regulations of this Bureau, is hereby accepted.

For the Director

Wayne M. Gardner
Chief Cadastral Surveyor of Oregon



FILED *Aug. 4, 1998*
BAKER COUNTY SURVEYOR
SURVEY NO. *9-39-271*