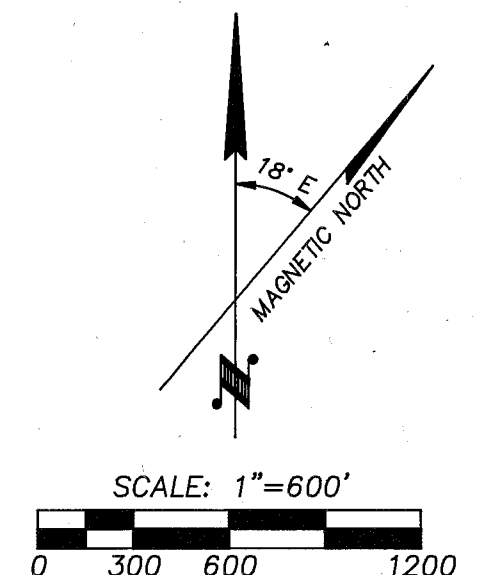


RECORD OF SURVEY PLAT

RAGGED MARBLE CADASTRAL SURVEY
 CONTRACT NO. 53-04M3-0-0063
 PERFORMED FOR THE USDA-FOREST SERVICE,
 WALLOWA-WHITMAN NATIONAL FOREST.
 SECTIONS 9, 15, & 16, T9S, R39E, W.M., BAKER COUNTY, OREGON
 SHEET 2 OF 2

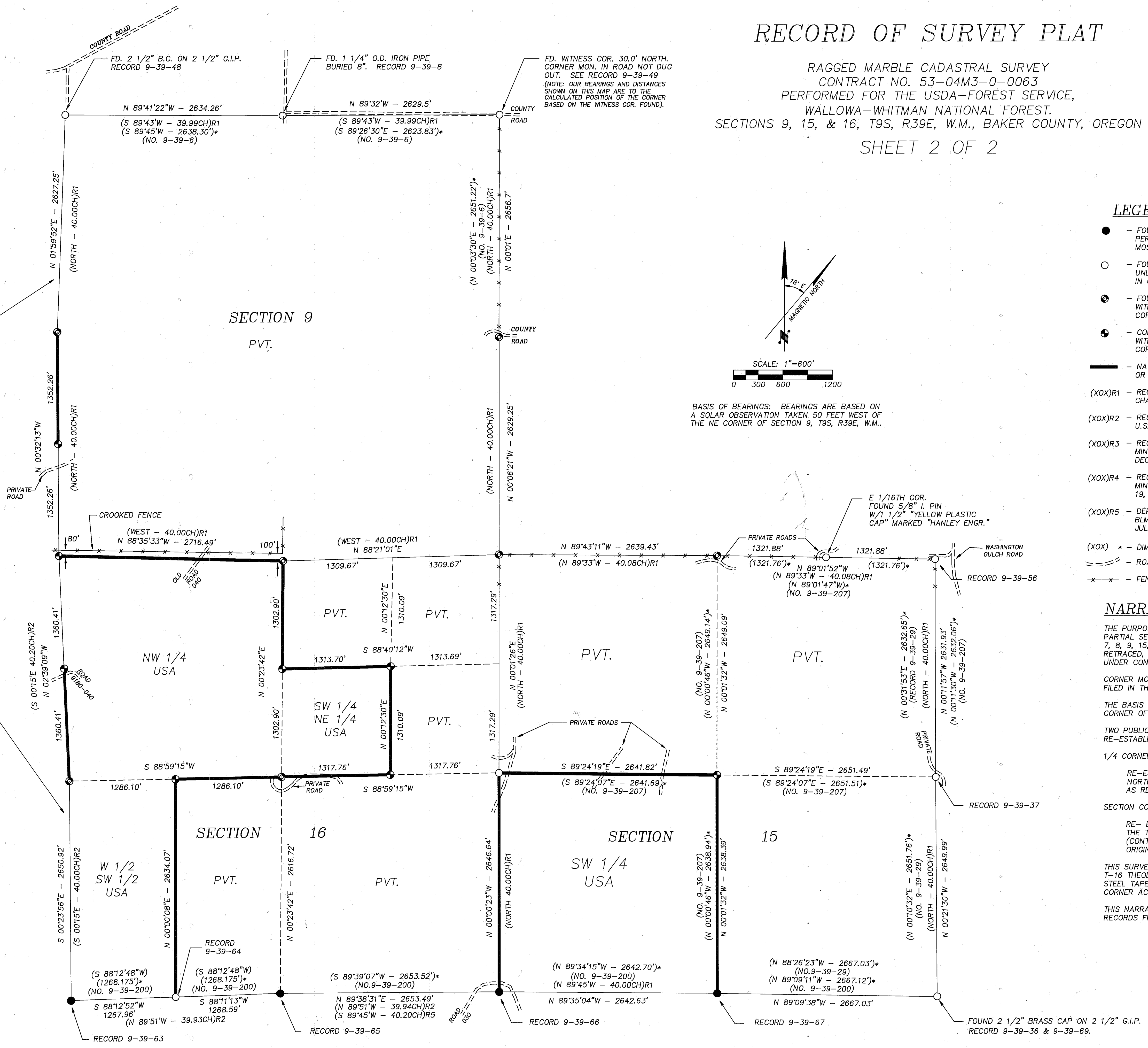
LEGEND

- - FOUND 3 1/4" BRASS CAP ON 2 1/2" GALV. IRON PIPE BY BLM, PER REMONUMENTATION AND SURVEYS IN 1971 AND 1972. THE MOST RECENT SURVEY RECORD IS INDICATED ON PLAT.
- - FOUND 2 1/2" ALUM. PIPE WITH 2 1/2" ALUM. CAP BY PS 1206, UNLESS OTHERWISE NOTED. SEE CORNER CERTIFICATES FILED IN COUNTY SURVEYORS OFFICE.
- ⊙ - FOUND ACCEPTABLE ORIGINAL CORNER EVIDENCE AND REMONUMENTED WITH 2 1/2" X 30" ALUM. PIPE WITH 2 1/2" ALUM. CAP. SEE CORNER RECORD FILED SEPARATELY.
- ⊕ - CORNER ESTABLISHED OR RE-ESTABLISHED AND MONUMENTED WITH 2 1/2" X 30" ALUM. PIPE WITH 2 1/2" ALUM. CAP. SEE CORNER RECORD FILED SEPARATELY.
- - NATIONAL FOREST BOUNDARY POSTED ON THIS SURVEY WITH 6' STEEL OR WOOD FENCE POSTS WITH SIGNS 54-2 ATTACHED.
- (XOX)R1 - RECORD REPORTED ON JOINT CONTRACT NO. 104 BY THOMPSON AND CHAPLIN, U.S. DEPUTY SURVEYORS, DATED APRIL 14, 1884.
- (XOX)R2 - RECORD REPORTED ON CONTRACT NO. 320 BY HENRY M. THATCHER, U.S. DEPUTY SURVEYOR, DATED APRIL 17, 1879.
- (XOX)R3 - RECORD REPORTED IN MS 192 BY CHAS. M. FOSTER, U.S. DEPUTY MINERAL SURVEYOR. SURVEYED UNDER INSTRUCTIONS DATED DECEMBER 18, 1888.
- (XOX)R4 - RECORD REPORTED IN MS 353 BY CHARLES M. FOSTER, U.S. DEPUTY MINERAL SURVEYOR. SURVEYED UNDER INSTRUCTIONS DATED SEPTEMBER 19, 1898.
- (XOX)R5 - DEPENDENT RESURVEY BY GERALD E. CHITTIK AND JOHN H. NELSON, BLM CADASTRAL SURVEYORS, UNDER SPECIAL INSTRUCTIONS DATED JULY 8, 1971.
- (XOX) * - DIMENSIONS OBSERVED ON PRIVATE SURVEY, RECORD NUMBER INDICATED.
- — — - ROADS
- x — - FENCES



BASIS OF BEARINGS: BEARINGS ARE BASED ON A SOLAR OBSERVATION TAKEN 50 FEET WEST OF THE NE CORNER OF SECTION 9, T9S, R39E, W.M.

MATCH LINE TO SHEET 1 OF 2



NARRATIVE OF SURVEY

THE PURPOSE OF THIS SURVEY WAS TO PERFORM CORNER SEARCH, CORNER MONUMENTATION, PARTIAL SECTION SUBDIVISION, AND NATIONAL FOREST BOUNDARY LINE POSTING IN SECTIONS 7, 8, 9, 15, 16, AND 17, T9S, R39E, W.M.. MINERAL SURVEYS NO. 192 AND 353 WERE ALSO RETRACED, REMONUMENTED AND POSTED. THE SURVEY WAS MADE AT THE REQUEST OF AND UNDER CONTRACT WITH THE USDA, WALLOWA-WHITMAN NATIONAL FOREST.

CORNER MONUMENTATION OR REMONUMENTATION CERTIFICATES ACCOMPANYING THIS PLAT ARE FILED IN THE OFFICE OF THE BAKER COUNTY SURVEYOR.

THE BASIS OF BEARINGS IS A SOLAR OBSERVATION TAKEN 50 FEET WEST OF THE NORTHEAST CORNER OF SECTION 9.

TWO PUBLIC LAND SURVEY CORNERS WERE DECLARED LOST AFTER DILIGENT SEARCH AND WERE RE-ESTABLISHED AS FOLLOWS:

1/4 CORNER COMMON TO SECTIONS 7 AND 8, T9S, R39E, W.M.:

RE-ESTABLISHED CORNER BY SINGLE PROPORTION MEASURE BETWEEN THE RECOVERED NORTHWEST AND SOUTHWEST CORNERS OF SECTION 8, USING THE THATCHER RECORD AS REPORTED UNDER CONTRACT NO. 320.

SECTION CORNER COMMON TO SECTIONS 8, 9, 16, AND 17, T9S, R39E, W.M.:

RE-ESTABLISHED CORNER BY DOUBLE PROPORTION MEASURE, USING GLO RECORD FROM THE THOMPSON-CHAPLIN SURVEY (CONTRACT NO. 104) AND FROM THE THATCHER SURVEY (CONTRACT NO. 320). RE-ESTABLISHMENT OF THIS CORNER INVOLVED MIXING THE ORIGINAL RECORDS OF GLO CONTRACT SURVEYS PERFORMED IN 1864 AND 1879.

THIS SURVEY WAS MADE WITH A 2 MAN CREW, BY RANDOM CLOSED TRAVERSE WITH A WILD T-16 THEODOLITE, MAC II-H INFRA-RED DISTANCE METER, BIPOD TYPE PRISM HOLDER AND STEEL TAPE. A BRUNTON POCKET TRANSIT WAS USED FOR OBSERVATION OF BEARINGS TO CORNER ACCESSORIES.

THIS NARRATIVE APPLIES TO SHEETS 1 AND 2, COMPRISING THIS SURVEY, AND TO THE CORNER RECORDS FILED SEPARATELY.

REGISTERED PROFESSIONAL LAND SURVEYOR
 William R. Wells
 OREGON
 JULY 22, 1977
 WILLIAM R. WELLS
 1108

WILLIAM R. WELLS, PLS 357 N.E. HWY. 11 P.O. BOX 1696 PENDLETON, ORE. 97801 PHONE: (503) 276-6362	PROJECT: RAGGED MARBLE CADASTRAL SURVEY
DATE: 12-18-90 CK BY: WRW	DR BY: WQ NO: 90-70