

NARRATIVE

This survey was for Charles Lewis, for the purpose of defining the boundaries and corners of the patented Robert Kitchen Placer Mining Claim, Mineral Survey Lot No. 56, surveyed by C. M. Foster in September, 1872. Mr. Lewis owns this claim.

The government plat of this claim survey shows a traverse by Foster, running Southwesterly from the patented L. W. Nelson Claim Corner No. 4, to the Kitchen Placer Corner No. 1, and consists of 8 courses. It also shows a tie to "Castle Rock" from Corner No. 1, and shows Salmon Creek flowing through the approximate center of the claim.

The claim lies in Section 18, T. 9 S., R. 39 E., W.M. the boundaries of which were not surveyed until June, 1879, which explains the reason Mr. Foster tied the mineral survey to natural objects and prior patented claim corners.

Philo H. Anderson, P.E., surveyed this property May, 1946 to April, 1950. A copy of his letter to the owners at that time explaining his findings and conclusions is attached to this document. I concur with his theory that Foster used magnetic bearings for the patent survey. Rotation to the true meridian from the L.W. Nelson Placer Corner No. 4 places the claim along Salmon Creek, as shown on the plat. Otherwise its position would fall about 2000 feet South-easterly, on a steep hillside.

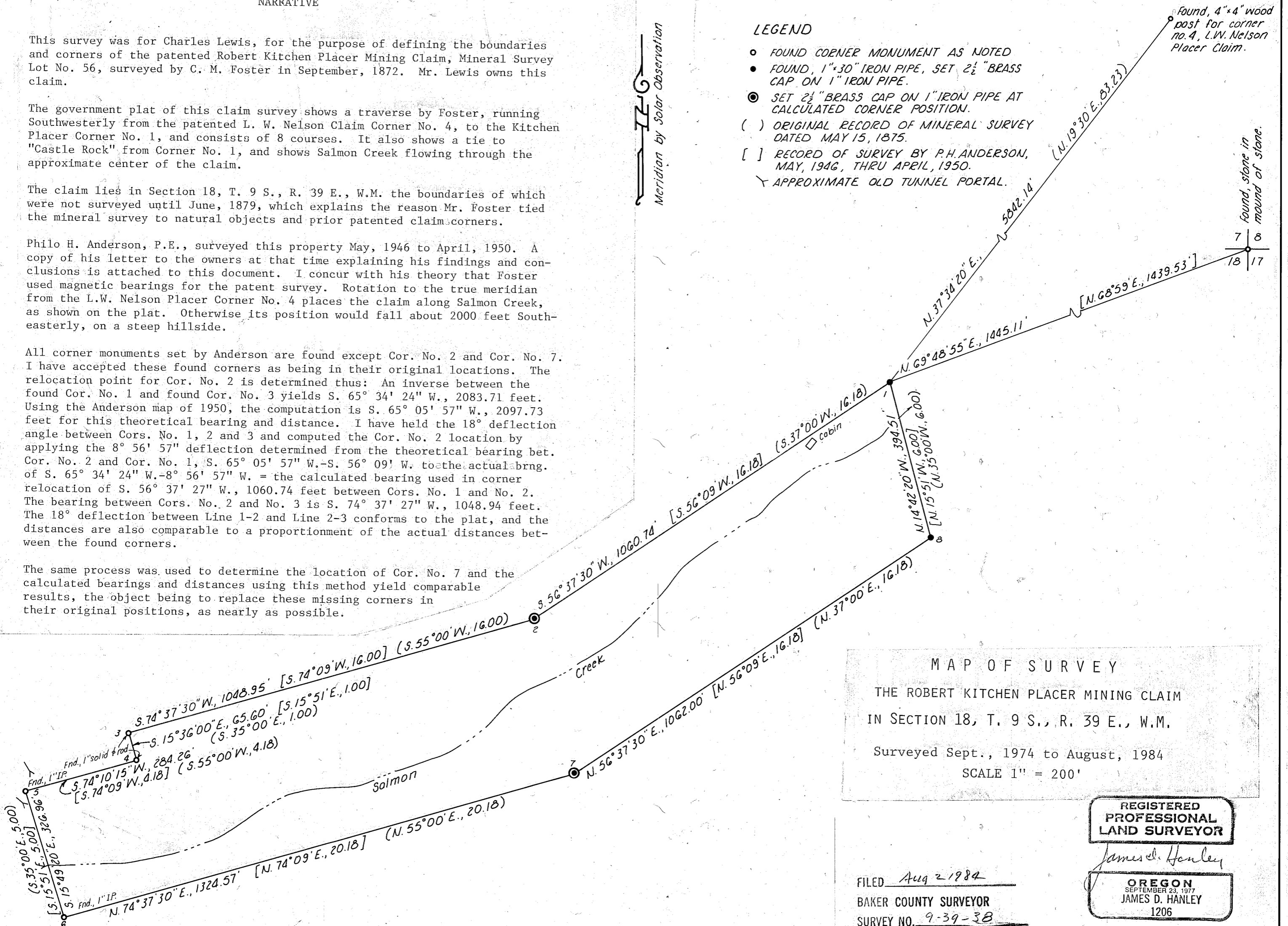
All corner monuments set by Anderson are found except Cor. No. 2 and Cor. No. 7. I have accepted these found corners as being in their original locations. The relocation point for Cor. No. 2 is determined thus: An inverse between the found Cor. No. 1 and found Cor. No. 3 yields S. 65° 34' 24" W., 2083.71 feet. Using the Anderson map of 1950, the computation is S. 65° 05' 57" W., 2097.73 feet for this theoretical bearing and distance. I have held the 18° deflection angle between Cors. No. 1, 2 and 3 and computed the Cor. No. 2 location by applying the 8° 56' 57" deflection determined from the theoretical bearing bet. Cor. No. 2 and Cor. No. 1, S. 65° 05' 57" W., -S. 56° 09' W. to the actual brng. of S. 65° 34' 24" W. -8° 56' 57" W. = the calculated bearing used in corner relocation of S. 56° 37' 27" W., 1060.74 feet between Cors. No. 1 and No. 2. The bearing between Cors. No. 2 and No. 3 is S. 74° 37' 27" W., 1048.94 feet. The 18° deflection between Line 1-2 and Line 2-3 conforms to the plat, and the distances are also comparable to a proportionment of the actual distances between the found corners.

The same process was used to determine the location of Cor. No. 7 and the calculated bearings and distances using this method yield comparable results, the object being to replace these missing corners in their original positions, as nearly as possible.

LEGEND

- FOUND CORNER MONUMENT AS NOTED
- FOUND, 1" x 30" IRON PIPE, SET 2 1/2" BRASS CAP ON 1" IRON PIPE.
- ⊙ SET 2 1/2" BRASS CAP ON 1" IRON PIPE AT CALCULATED CORNER POSITION.
- ( ) ORIGINAL RECORD OF MINERAL SURVEY DATED MAY 15, 1875.
- [ ] RECORD OF SURVEY BY P.H. ANDERSON, MAY, 1946, THRU APRIL, 1950.
- ∟ APPROXIMATE OLD TUNNEL PORTAL.

Meridian by Solar Observation



MAP OF SURVEY  
 THE ROBERT KITCHEN PLACER MINING CLAIM  
 IN SECTION 18, T. 9 S., R. 39 E., W.M.

Surveyed Sept., 1974 to August, 1984

SCALE 1" = 200'

REGISTERED  
 PROFESSIONAL  
 LAND SURVEYOR

*James D. Hanley*

OREGON  
 SEPTEMBER 23, 1977  
 JAMES D. HANLEY  
 1206

FILED Aug 2 1984  
 BAKER COUNTY SURVEYOR  
 SURVEY NO. 9-39-38

Found, stone in mound of stone.

7 8  
 18 17