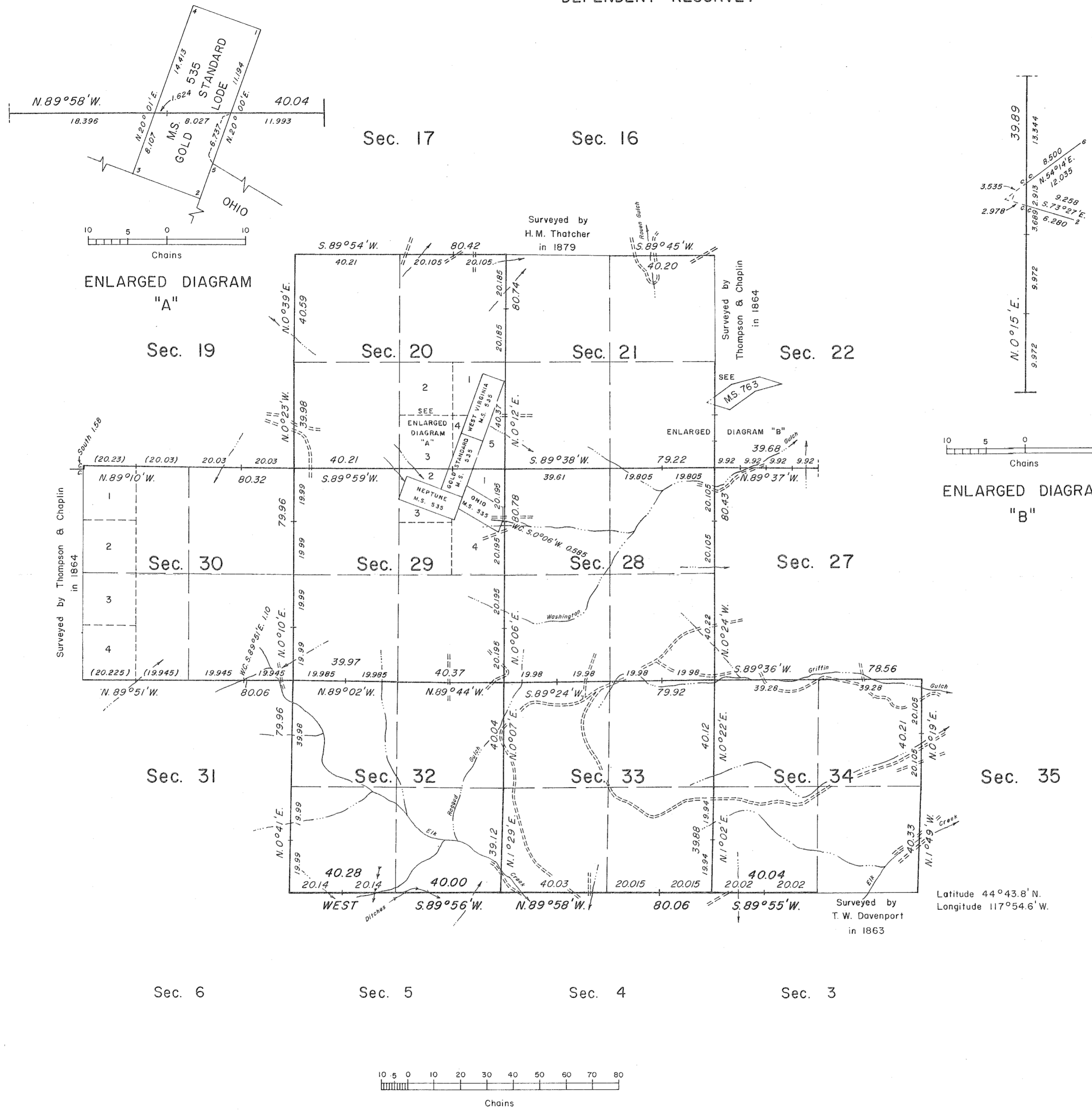


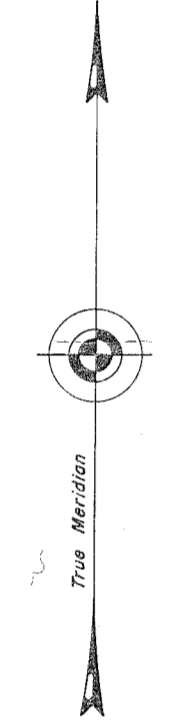
TOWNSHIP 9 SOUTH, RANGE 39 EAST, OF THE WILLAMETTE MERIDIAN, OREGON.

DEPENDENT RESURVEY



ENLARGED DIAGRAM "A"

ENLARGED DIAGRAM "B"



MEAN MAGNETIC DECLINATION 18°30' E.

M.S. 763 GOLDEN HOPE LODE

A history of survey is contained in the field notes.

This plat represents the dependent resurvey of portions of the south boundary, subdivisional lines and Mineral Survey No. 763, designed to restore the corners in their true original locations according to the best available evidence, in T. 9 S., R. 39 E., Willamette Meridian, Oregon.

The lottings and areas are as shown on the township plats approved August 24, 1864, November 8, 1879, October 13, 1893, November 5, 1898 and January 29, 1904, and the approved Mineral Survey records.

Survey executed by John H. Nelson and Gerald E. Chittick, Cadastral Surveyors beginning July 29, 1971, and completed October 18, 1972, pursuant to Special Instructions dated July 8, 1971, for Group No. 751, Oregon.

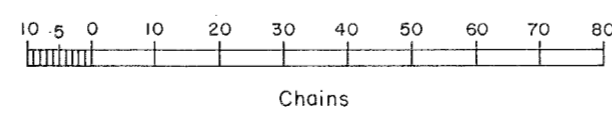
UNITED STATES DEPARTMENT OF THE INTERIOR
BUREAU OF LAND MANAGEMENT
Washington, D.C. April 8, 1976

This plat is strictly conformable to the approved field notes, and the survey, having been correctly executed in accordance with the requirements of law and the regulations of this Bureau, is hereby accepted.

For the Director

J. J. [Signature]
Acting Chief, Division of Cadastral Survey

Latitude 44°43.8' N.
Longitude 117°54.6' W.



Timber in this area consists of fir, pine and oak.

FILED 8-18-76
BAKER COUNTY SURVEYOR
SURVEY NO. 9-39-15