

# CORNER RESTORATION FORM

Township 9S Range 37E Section 20 County BAKER

State OREGON Date 09-06-17 Number P-05

Corner Designation : 1/4 COR., SEC. 19 & 20

Previous Renewals \_\_\_\_\_

Monument (s) Found: \_\_\_\_\_ (Condition and Source)

FOUND A 2 1/2" X 30" GALVANIZED PIPE AND BRASS CAP AS SHOWN APPROXIMATELY 0.75 FEET ABOVE GRADE.

Accessories Found: \_\_\_\_\_

"T" POST WITH SIGN BEARING NORTH 84° EAST, 3.83 FEET;  
 "T" POST WITH SIGN BEARING SOUTH 09° EAST, 4.65 FEET;  
 12" FIR TREE WITH BEARING TAG, NORTH 70° WEST, 47.90 FEET

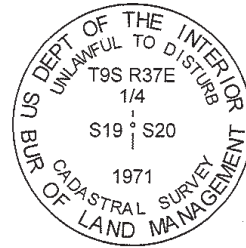
Monument & Accessories Set (Procedure and Description)

SET SPIKE IN SOUTHWEST FACE OF FOUND 12" FIR TREE WITH BEARING TAG, NORTH 70° NORTH, 47.90 FEET;  
 SET SPIKE IN NORTHWEST FACE APPROXIMATELY 0.5 FEET ABOVE GRADE IN AN 8" PINE, NORTH 50° EAST, 8.90 FEET;

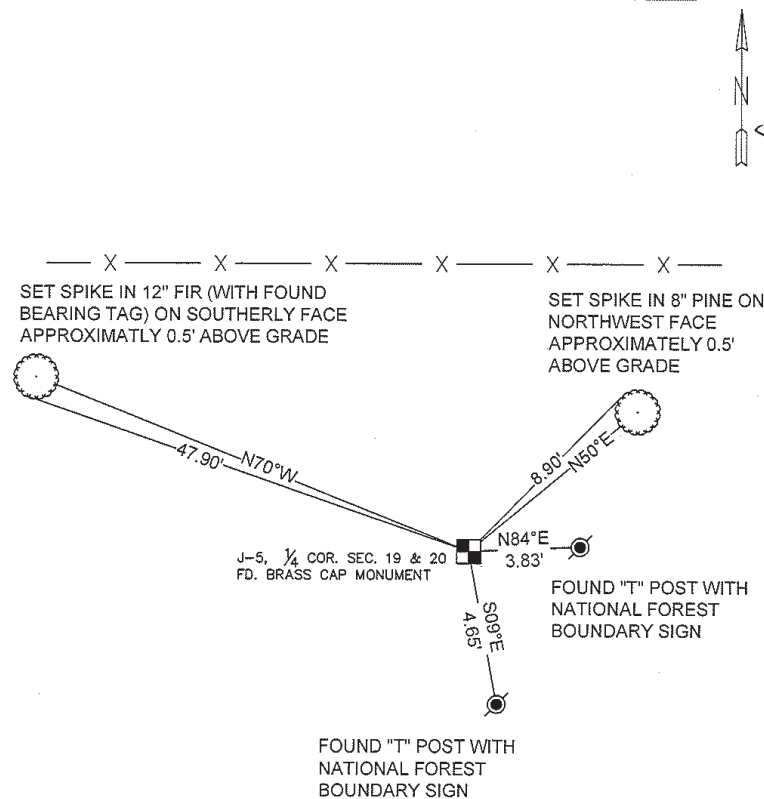
- \_\_\_\_\_ Condition Report Only
- \_\_\_\_\_ Not Found
- \_\_\_\_\_ Renewed
- Surveyed In
- Referenced

### MONUMENT DETAIL

Found \_\_\_\_\_ Set



### Sketch of Monument, Accessories and General Area



Surveyor's Seal

**REGISTERED  
PROFESSIONAL  
LAND SURVEYOR**

OREGON  
MAY 14, 2013  
**TIMOTHY J. FOX**  
87770

RENEWS: 12-31-2019

Agency FOX LAND SURVEYING

1515 S. SHOSHONE

BOISE, ID 83705

Party Chief CL

Notekeeper TW

Job No. 1541

Field Book 1541; p. 41

Date of Work 09/06/17

**COUNTY SURVEYOR  
FILING INFORMATION**

By \_\_\_\_\_  
 Received Feb. 14, 2018  
 Accepted \_\_\_\_\_  
 Survey No. 9-39-321  
 Dwg. No. \_\_\_\_\_  
 Index No. \_\_\_\_\_