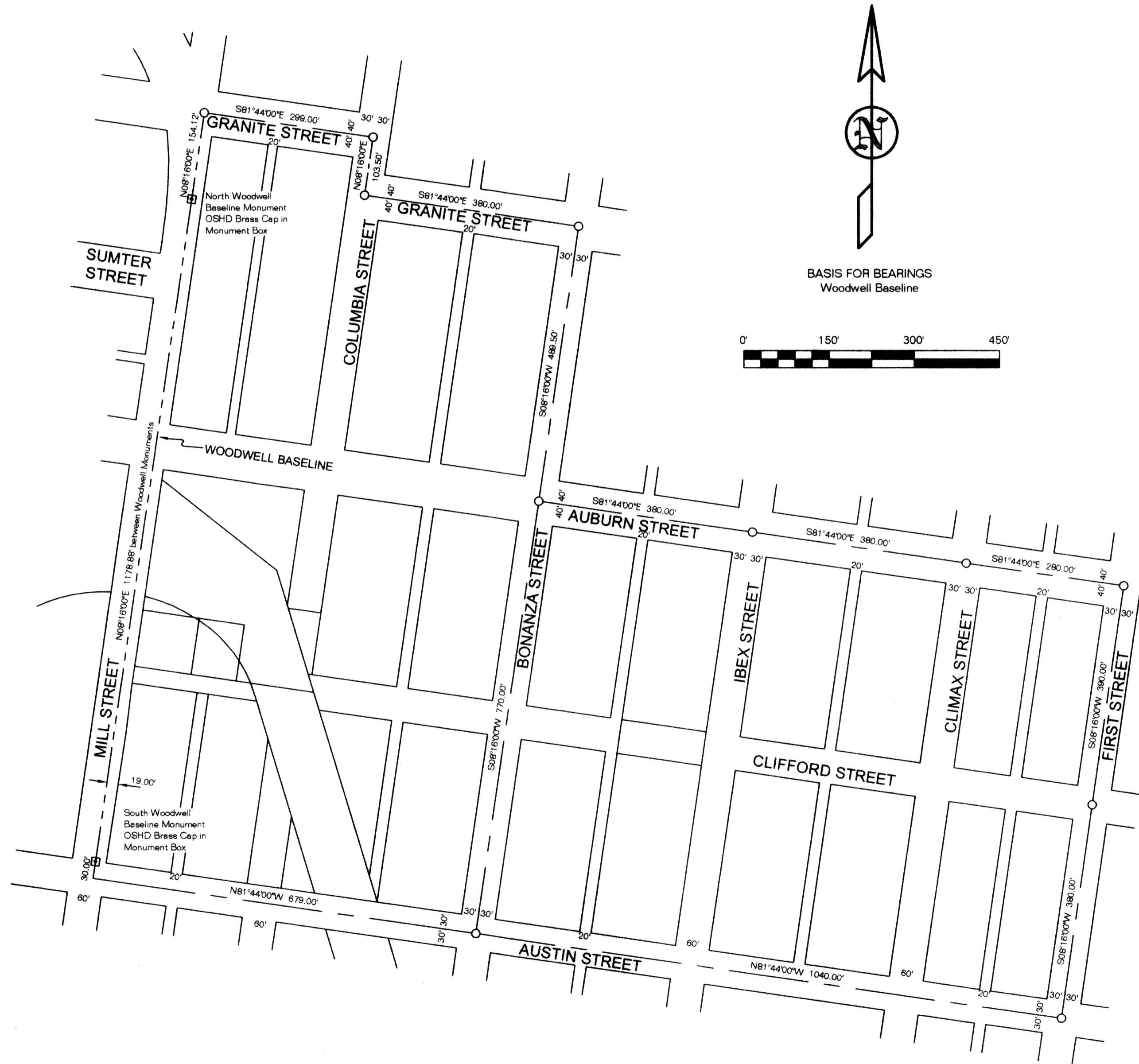
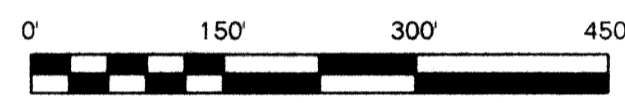


MAP OF SURVEY

S1/2SE1/4 of Section 29 & N1/2NE1/4 Section 32, T9S, R37E, WM
City of Sumpter, Baker County, Oregon



BASIS FOR BEARINGS
Woodwell Baseline



NARRATIVE

The purpose of this survey was to establish street intersection monuments to add primary control to the two Woodwell Baseline monuments. Most of the monuments were established along the streets in which Pine Telephone placed fiber optic cable about 5 feet from the property line. All monuments were set 4 to 6 inches below the street surface, at record distances and bearings as more fully discussed on Survey No. 9-37-28. The Woodwell Baseline is 19 feet from and parallel to the East right-of-way line of Mill Street. There are numerous surveys that have been made along this route, but they were all based on the information shown on this map.

CERTIFICATION

I, Leland Lee Myers, a Professional Land Surveyor registered in the State of Oregon, 587 E Auburn Street, PO Box 99, Sumpter, Oregon 97877, completed this survey on September 30, 2004, by setting the monuments and do hereby certify that the information shown on this map is correct to the best of my knowledge.

REGISTERED
PROFESSIONAL
LAND SURVEYOR

Leland Lee Myers

OREGON
JULY 9, 1965
LELAND LEE MYERS
699
Renewal Date 1/1/07

LEGEND

Set 30" long No. 5 Rebar with Yellow
Plastic Cap marker PLS 699
4-6" under the road surface

FILED OCTOBER 14, 2005
BAKER COUNTY SURVEYOR
SURVEY No. 9-37-285