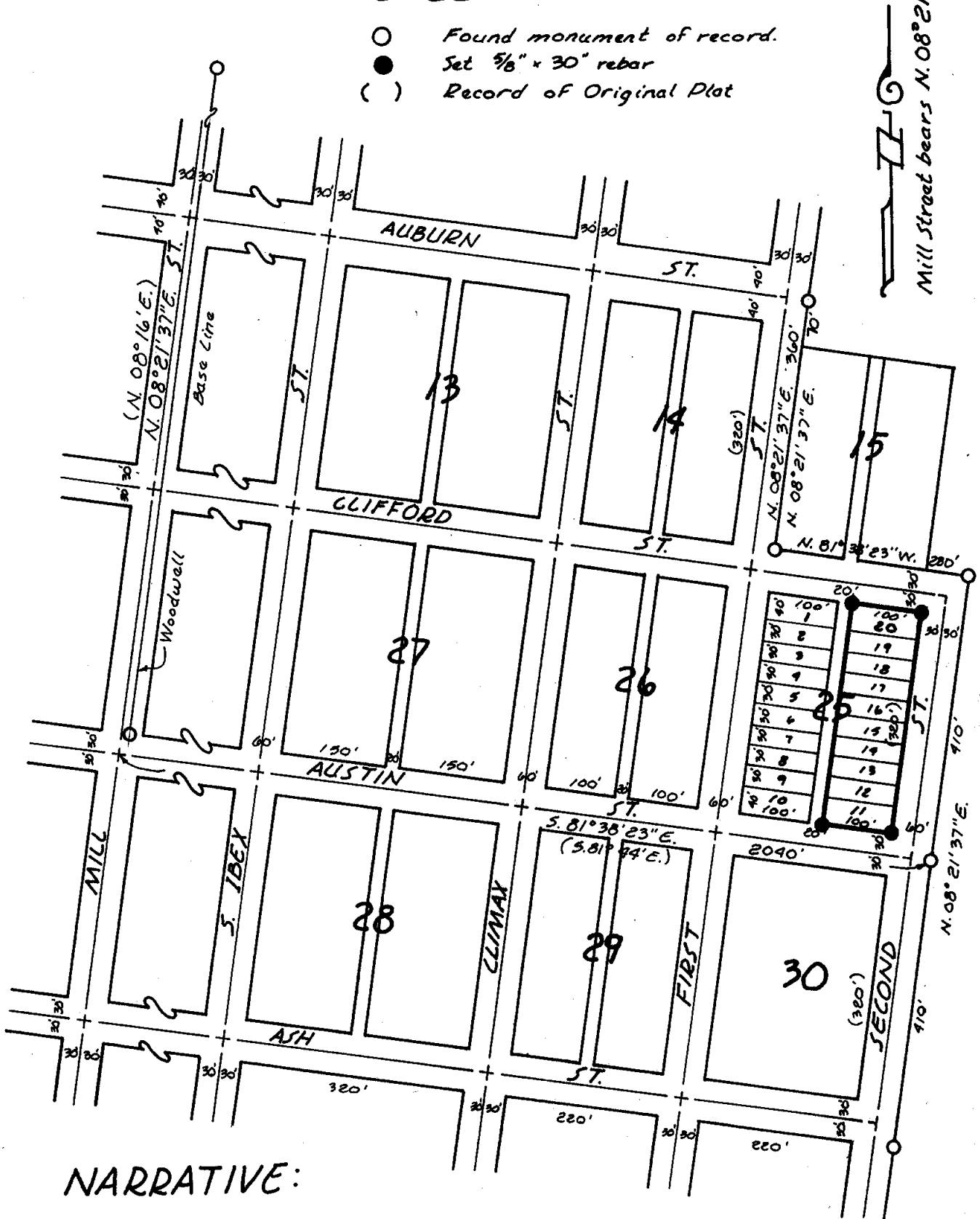


# LEGEND:

- Found monument of record.
- Set 5/8" x 30" rebar
- ( ) Record of Original Plat



## NARRATIVE:

This survey for Al Stemen was made for the purpose of marking on the ground the corners of the E. 1/2 of Block 25 (Lots 11 through 20).

Monumentation was recovered along the East line of Second Street and the North line of Clifford Street as shown hereon.

The survey proceeded according to standard practices in the original plat of this addition.

## MAP OF SURVEY

IN SUMPTER TOWNSITE SYNDICATE'S  
FIRST ADDITION

Surveyed September 23, 1986 Scale: 1"=200'  
for Al Stemen

## REFERECES:

Surveys No. 9-37-1 and 9-37-62

REGISTERED  
PROFESSIONAL  
LAND SURVEYOR

*James D. Hanley*  
OREGON  
SEPTEMBER 23, 1977  
JAMES D. HANLEY  
1206

FILED Sept. 30 1986  
BAKER COUNTY SURVEYOR  
SURVEY NO. 9-37-176