

NARRATIVE OF SURVEY

THIS RETRACEMENT AND DEPENDENT RESURVEY OF THE IDENTIFIED PATENTED MINERAL SURVEY PROPERTIES WAS PERFORMED BY WILLIAM L. HANLEY O.R.S. 1639, UNDER CONTRACT WITH THE USDA-FOREST SERVICE FOR THE PURPOSE OF REESTABLISHING AND/OR REMONUMENTING CERTAIN ORIGINAL OR PREVIOUSLY REMONUMENTED MINERAL SURVEY CORNERS AND TO MARK THE BOUNDARY BETWEEN PRIVATE OWNERSHIP AND THOSE LANDS OF THE PUBLIC DOMAIN ADMINISTERED BY THE USDA-FOREST SERVICE AS SHOWN ON THIS PLAT, COMPOSED OF SHEET NUMBER AND 2 OF 2. CORNER MONUMENTS FOUND AND ESTABLISHED ARE GENERALLY DESCRIBED IN THE LEGEND ON SHEET 1 OF 2 OF THIS PLAT AND ARE INDIVIDUALLY AND PARTICULARLY DESCRIBED ON THEIR CERTIFIED RECORD OF LAND CORNER MONUMENTATION FILED SEPARATELY. BOUNDARY LINES WERE ESTABLISHED BY OFFSET MEASUREMENT FROM SURVEY CONTROL POINTS AND MARKED AS STATED IN THE LEGEND TO THIS PLAT. FIELD INSTRUMENTS USED WERE A 6-SECOND THEODOLITE AND ELECTRONIC DISTANCE METER CONTAINED IN A SINGLE-UNIT MANUAL TOTAL STATION (JIKON NTD-4) WITH ANGLES AND DISTANCES TAKEN TO REMOTE SINGLE PRISM ASSEMBLY ATTACHED TO A 4-FOOT TELESCOPING RANGE POLE PLUMBED WITH A 2-LEGGED SUIPOD; BACKSIGHTS TAKEN TO TACK IN 4-FOOT LATH; MEASUREMENTS TO CORNER ACCESSORIES WITH A STEEL COMPASS WITH A 3-INCH NEEDLE AND STAFF TAPE.

DISCUSSION

—THE RETRACEMENT OF THE PERTAINING PATENTED MINERAL SURVEY PROPERTIES GENERALLY SHOWED GOOD CONFORMANCE TO THE ORIGINAL RECORD AND THE EXCEPTIONS TO THIS CONFORMANCE ARE DISCUSSED AS FOLLOWS. IRREGULARITIES PERTAINING TO INDIVIDUAL CORNERS AND/OR THEIR RECORD ACCESSORIES ARE EXPLAINED IN THE CERTIFIED RECORD OF LAND CORNER MONUMENTATION FILED SEPARATELY FOR EACH CORNER.

—LINE 4-1 LILAC LODGE MS 376 WAS MEASURED TO BE 151.12 FEET DISTANCE (RECORD STATES 154.6 FEET) FOR WHICH NO EXPLANATION WAS DEVELOPED. INDISPURTABLE RECORD EVIDENCE FOR COR. NOS. 1 AND 4 AT EACH END OF THE SAID LINE WAS RECOVERED.

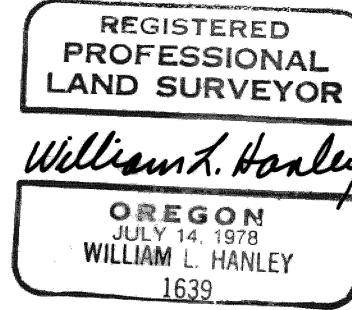
—THE CONNECTING LINE BETWEEN COR. NO. 4 ORLEANS LODGE MS 653A AND COR. NO. 4 ORLEANS MILL SITE MS 653B WAS MEASURED TO BE 155.67 FEET DISTANCE (RECORD SHOWS 100.69 FEET). CALCULATION OF THE RECORD COURSES AND DISTANCES AROUND THE SAID ORLEANS MILL SITE RESULTED IN A MIS-CLOSURE OF 5.0 FEET AND INDICATED THE RECORD FOR LINE 4-1 ORLEANS MILL SITE SHOULD HAVE BEEN 150.69 FEET DISTANCE (RECORD SHOWS 155.69 FEET) AND THE FORMER DISTANCE WAS USED FOR REESTABLISHMENT OF THE LOST COR. NO. 1 ORLEANS MILL SITE.

—THE RECORD TIES TO A CORNER OF THE PUBLIC LAND SURVEY FOR MINERAL SURVEY NOS. 177, 653A 1B, AND 745 WERE MADE TO THE NORTHEAST CORNER OF SECTION 6, T. 9 S., R. 37 E., W.M., ORIGINALLY ESTABLISHED BY E. P. MCCORMACK IN 1881. ALL OF THE CORNERS ALONG THE ORIGINAL LINE BETWEEN T. 9 S., R. 37 E., W.M. WERE LATER REJECTED AND REESTABLISHED BY INDEPENDENT RESURVEY IN 1924 APPROXIMATELY 7 CHAINS NORTH BY LINCOLN E. WILKES THEREFORE, THE RECORD REFERENCE TO THE REJECTED TOWNSHIP LINE HAS NOT BEEN RECORDED ON THIS PLAT.

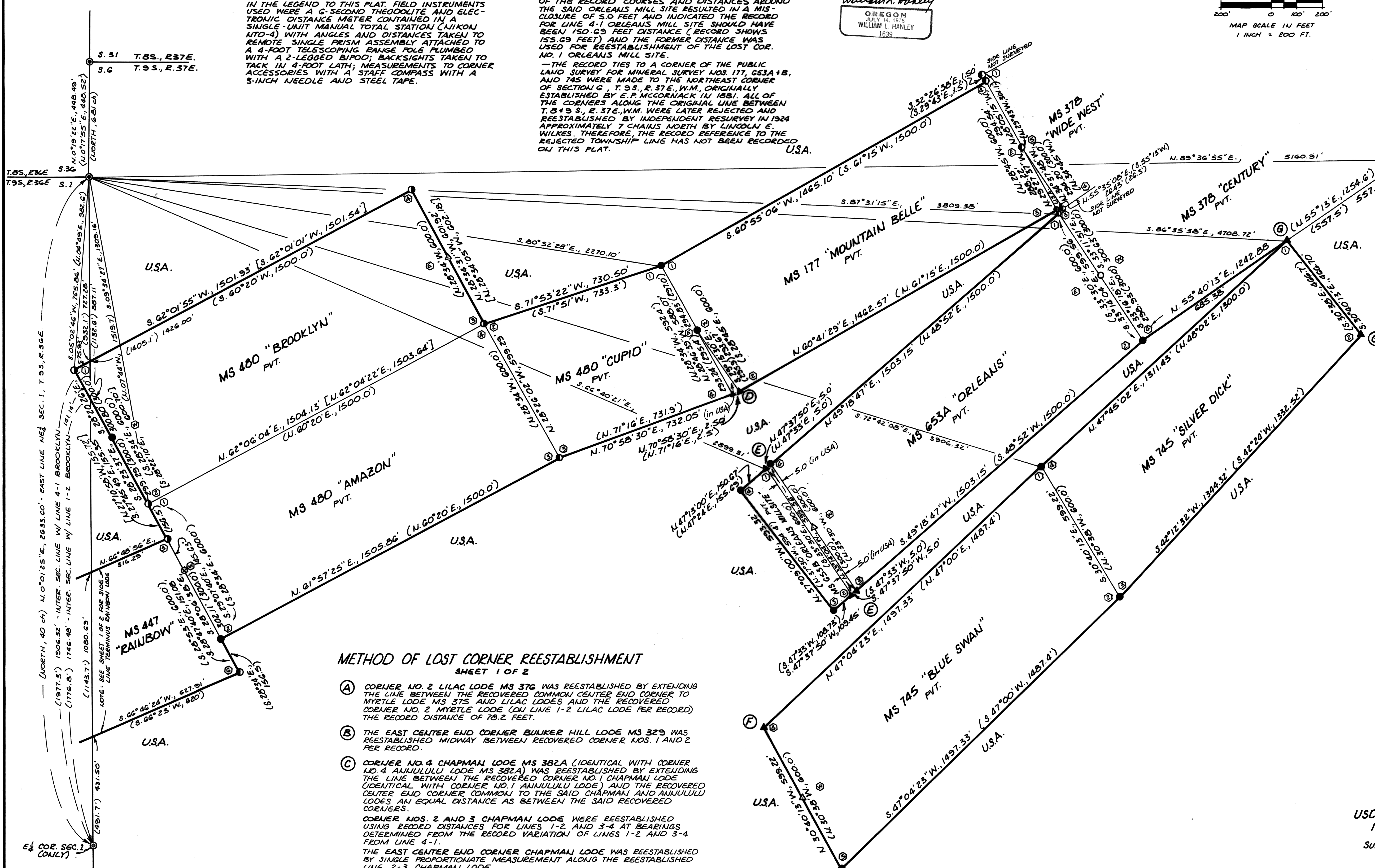
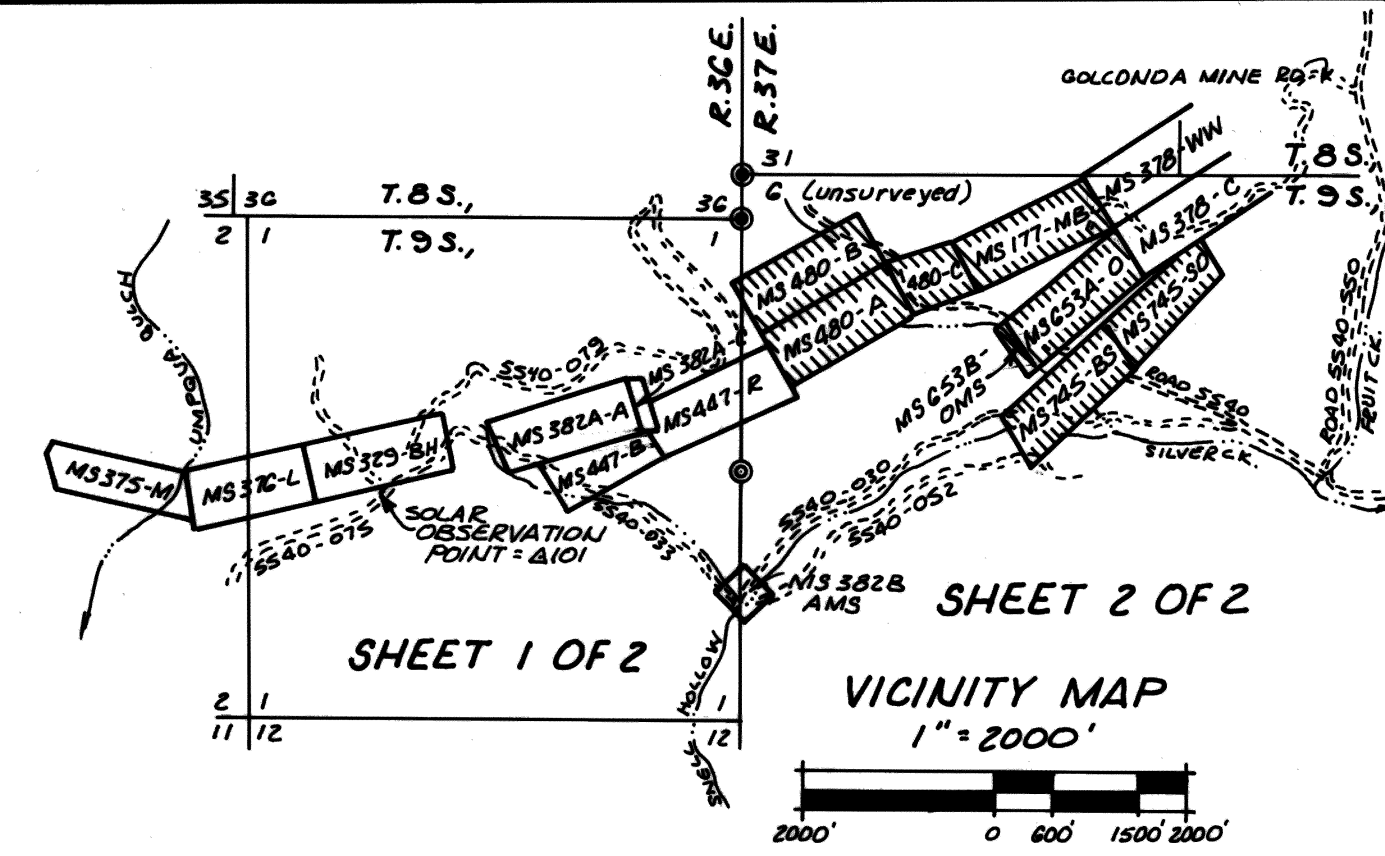
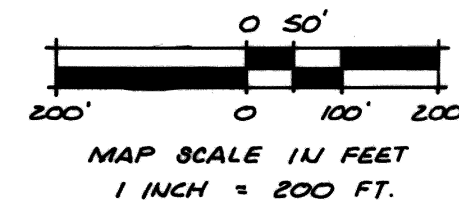
SURVEYOR'S CERTIFICATE

I, WILLIAM L. HANLEY, A REGISTERED LAND SURVEYOR IN THE STATE OF OREGON, DO HEREBY CERTIFY THAT THIS PLAT (CONSISTING OF SHEET NOS. 1 & 2 OF 2), AND THE CERTIFIED RECORD OF LAND CORNER MONUMENTATION CERTIFICATES, ACCOMPANYING THIS PLAT FILED SEPARATELY, IS A TRUE REPRESENTATION OF A SURVEY PERFORMED BY ME AT THE REQUEST OF THE USDA-FOREST SERVICE IN FULL CONFORMANCE WITH THE STATUTES OF THE STATE OF OREGON AND WITH THE ARTICLES OF MY CONTRACT.

William L. Hanley
WILLIAM L. HANLEY, OWNER
BILL HANLEY SURVEYING CO.
OREGON LICENSE NO. 1639



BEARINGS ARE BASED ON A SOLAR OBSERVATION TAKEN AT CONTROL POINT NO. 101 WHICH BEARS S. 76° 54' 55" W., 1050.26 FEET DISTANCE FROM CORNER NO. 2, BUNKER HILL QUARTE CLAIM, MS 325, IN THE SW 1/4 OF SECTION 1, T. 9 S., R. 36 E., W.M. THE MEAN MEASURED MAGNETIC DECLINATION IS 20° E.



METHOD OF LOST CORNER REESTABLISHMENT
SHEET 1 OF 2

- (A) CORNER NO. 2 LILAC LODGE MS 376 WAS REESTABLISHED BY EXTENDING THE LINE BETWEEN THE RECOVERED COMMON CENTER END CORNER TO MYRTLE LODGE MS 375 AND LILAC LODGES AND THE RECOVERED CORNER NO. 2 MYRTLE LODGE (ON LINE 1-2 LILAC LODGE PER RECORD) THE RECORD DISTANCE OF 76.2 FEET.
 - (B) THE EAST CENTER END CORNER BUNKER HILL LODGE MS 325 WAS REESTABLISHED MIDWAY BETWEEN RECOVERED CORNER NOS. 1 AND 2 PER RECORD.
 - (C) CORNER NO. 4 CHAPMAN LODGE MS 382A (IDENTICAL WITH CORNER NO. 4 ANJULULU LODGE MS 382A) WAS REESTABLISHED BY EXTENDING THE LINE BETWEEN THE RECOVERED CORNER NO. 1 CHAPMAN LODGE (IDENTICAL WITH CORNER NO. 1 ANJULULU LODGE) AND THE RECOVERED CENTER END CORNER COMMON TO THE SAID CHAPMAN AND ANJULULU LODGES AN EQUAL DISTANCE AS BETWEEN THE SAID RECOVERED CORNERS.
- CORNER NOS. 2 AND 3 CHAPMAN LODGE WERE REESTABLISHED USING RECORD DISTANCES FOR LINES 1-2 AND 3-4 AT BEARINGS DETERMINED FROM THE RECORD VARIATION OF LINES 1-2 AND 3-4 FROM LINE 4-1.
- THE EAST CENTER END CORNER CHAPMAN LODGE WAS REESTABLISHED BY SINGLE PROPORTIONATE MEASUREMENT ALONG THE REESTABLISHED LINE 2-3 CHAPMAN LODGE.
- CORNER NO. 4 RAINBOW LODGE MS 447 WAS REESTABLISHED ON LINE 2-3 CHAPMAN LODGE AT THE RECORD DISTANCE OF 3.4 FEET FROM THE REESTABLISHED EAST CENTER END CORNER TOWARDS THE REESTABLISHED CORNER NO. 3 AND ON LINE 2-3 CHAPMAN LODGE PER RECORD.

METHOD OF LOST CORNER REESTABLISHMENT
SHEET 2 OF 2

- (D) CORNER NO. 4 CUPID LODGE MS 480 WAS REESTABLISHED BY EXTENDING THE LINE BETWEEN RECOVERED CORNER NO. 1 CUPID LODGE (IDENTICAL WITH CORNER NO. 1 MOUNTAIN BELLE LODGE MS 177) AND THE COMMON CENTER END CORNER TO THE SAID CUPID AND MOUNTAIN BELLE LODGES AT THE PROPORTIONAL DISTANCE OF 233.24 FEET AS DETERMINED BY THE MEASURED AND RECORD DISTANCE BETWEEN THE SAID RECOVERED CORNERS.
- (E) CORNER NO. 2 MOUNTAIN BELLE LODGE MS 177 WAS REESTABLISHED AT THE RECORD DISTANCE OF 2.50 FEET FROM THE REESTABLISHED CORNER NO. 4 CUPID LODGE AND ON THE EXTENDED LINE 3-4 CUPID LODGE PER RECORD.
- (F) CORNER NO. 3 ORLEANS LODGE MS 653A WAS REESTABLISHED BY FIXING LINE 2-3 PARALLEL AND OF EQUAL LENGTH TO LINE 4-1 WHICH FIXES LINE 3-4 PARALLEL AND OF EQUAL LENGTH TO LINE 1-2.
- (G) CORNER NO. 2 ORLEANS MILL SITE MS 653B WAS REESTABLISHED AT THE RECORD DISTANCE OF 5.0 FEET FROM THE REESTABLISHED CORNER NO. 3 ORLEANS LODGE AND ON THE LINE BETWEEN THE SAID CORNER NO. 3 AND CORNER NO. 3 ORLEANS MILL SITE PER RECORD.
- (H) CORNER NO. 1 ORLEANS MILL SITE MS 653B WAS REESTABLISHED AT A POINT PARALLEL AND OF EQUAL LENGTH TO THE CONNECTING LINE BETWEEN CORNER NO. 3 ORLEANS LODGE AND CORNER NO. 2 ORLEANS MILL SITE FROM THE RECOVERED CORNER NO. 4 ORLEANS LODGE PER RECORD.
- (I) CORNER NO. 4 BLUE SWAN LODGE MS 745 WAS REESTABLISHED BY FIXING LINE 4-1 PARALLEL AND OF EQUAL LENGTH TO LINE 2-3 WHICH FIXES LINE 3-4 PARALLEL AND OF EQUAL LENGTH TO LINE 1-2.
- (J) CORNER NO. 1 SILVER DICK LODGE MS 745 WAS REESTABLISHED ON LINE 4-1 OF THE CENTURY LODGE MS 376 AT THE RECORD DISTANCE OF 557.5 FEET FROM CORNER NO. 1 CENTURY LODGE PER RECORD.
- (K) CORNER NO. 2 SILVER DICK LODGE MS 745 WAS REESTABLISHED ON A LINE PARALLEL TO THE OPPOSITE END LINE 3-4 AND AT THE RECORD DISTANCE.

NOTES
FOR RECORD OF CORNER MONUMENTATION SEE CERTIFIED RECORD OF LAND CORNER MONUMENTATION FILED SEPARATELY.
FOR LEGEND AND HISTORY OF SURVEYS SEE SHEET 1 OF 2.

FIELD BOOK REFERENCES
FIELD BOOK NOS. 1, 2 & 3, SNELL HOLLOW CADASTRAL SURVEY

RECORD OF SURVEY PLAT
SNELL HOLLOW CADASTRAL SURVEY
USDA-FOREST SERVICE CONTRACT NO. 43-04M3-7-G123
IN SECS. 1 & 2, T. 9 S., R. 36 E., & SEC. 6, T. 9 S., R. 37 E., W.M.
Surveyed Oct., Nov., & Dec., 1987 Scale 1"=200'
SURVEYED BY: WILLIAM L. HANLEY, OWNER
BILL HANLEY SURVEYING CO.
3120 GRANDVIEW DR.
P.O. BOX 824
BAKER, OREGON 97814
(503) 523-4325