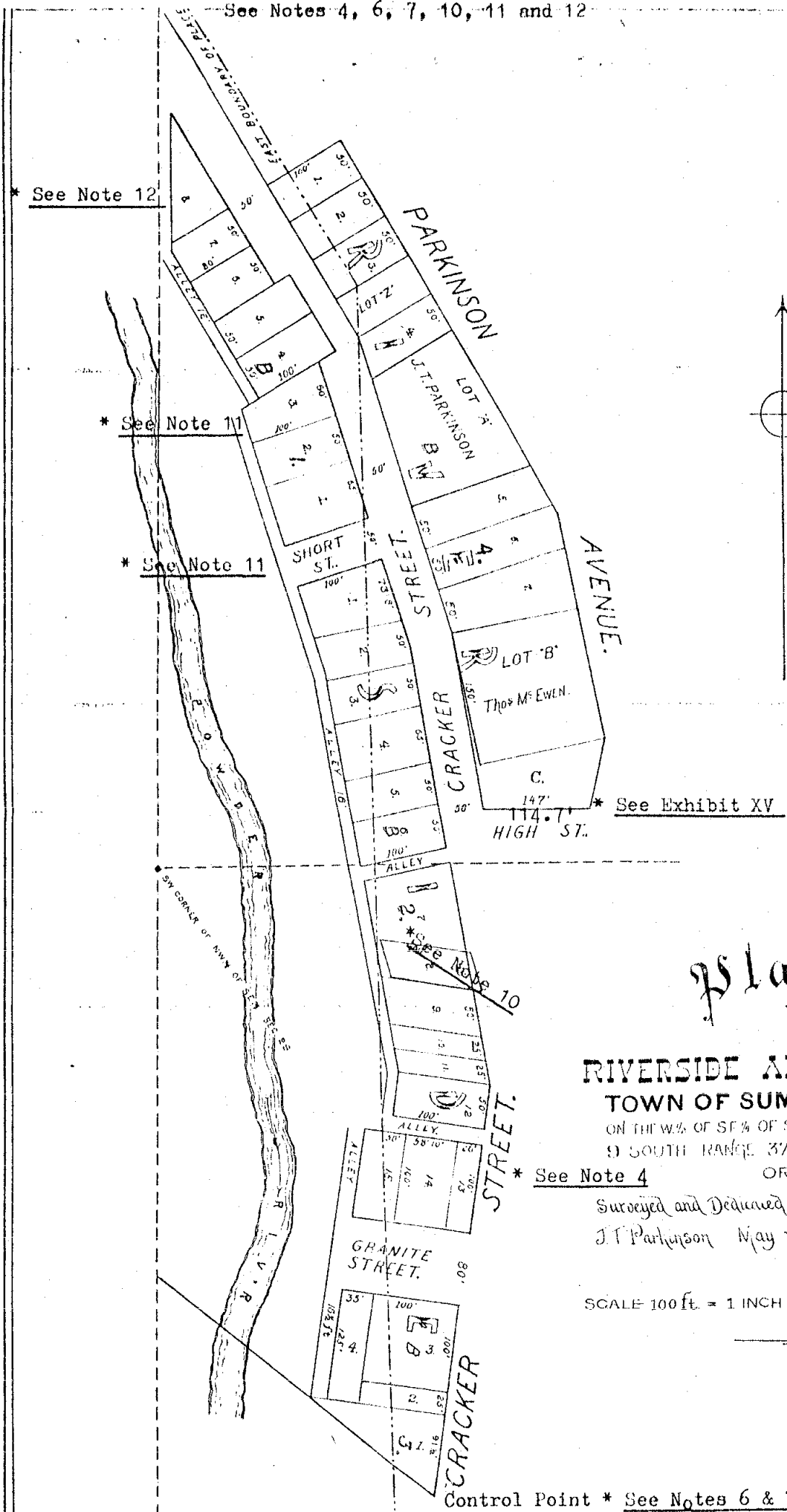


Exhibit V - Riverside Addition

Reduced Original Plat from Deeds Book 33-453



Plan of
THE

RIVERSIDE ADDITION

TOWN OF SUMPTER SITUATE
ON THE W. 1/2 OF SE 1/4 OF SECTION 29 IN TOWNSHIP
9 SOUTH RANGE 37 EAST IN BAKER CO
OREGON

Surveyed and Dedicated by A.W. Ellis and
J.T. Parkinson May 13th 1899

OFFICE OF
C.M. Foster, Sr.

SCALE 100 ft = 1 INCH

Control Point * See Notes 6 & 7