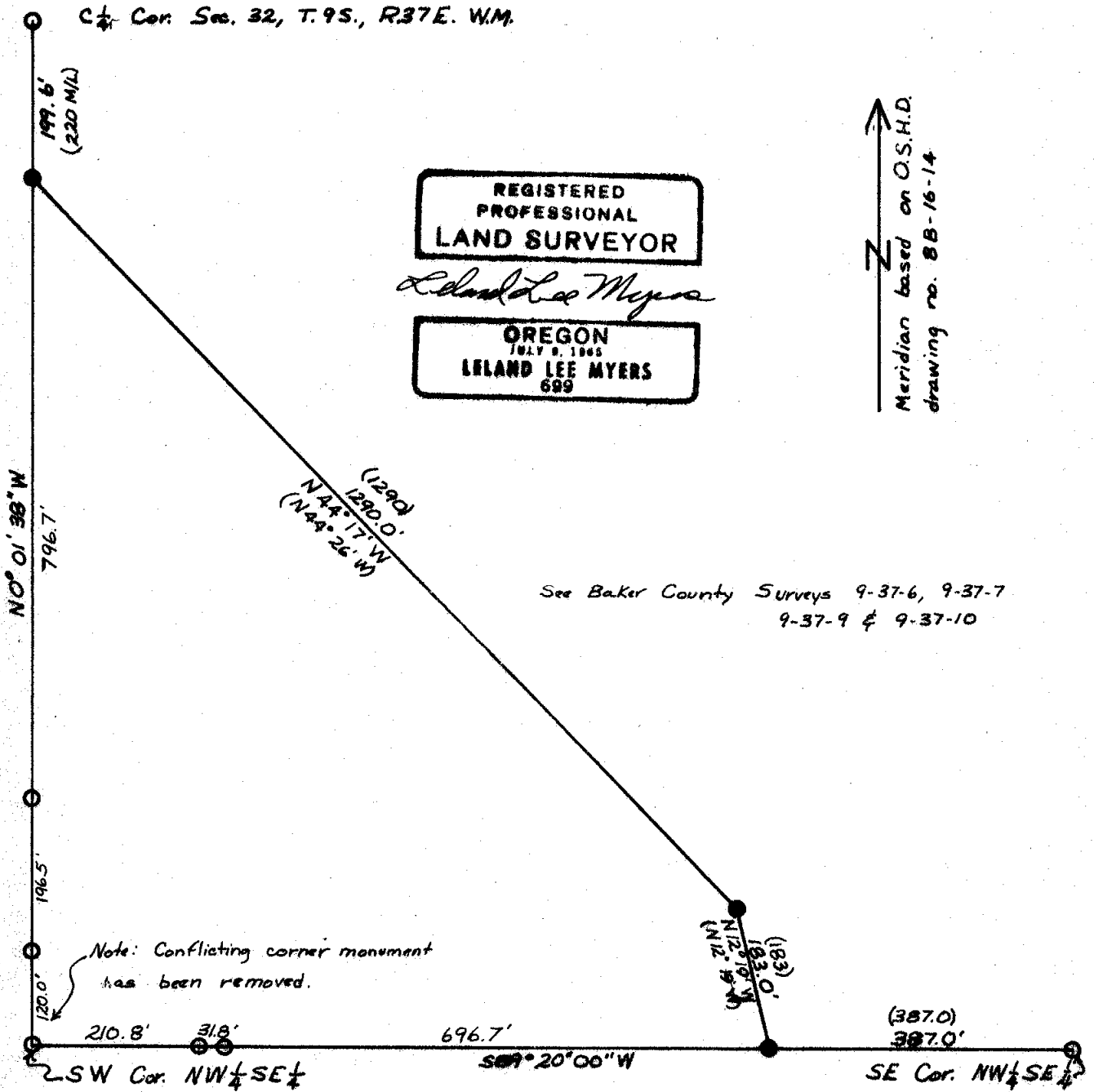


C $\frac{1}{4}$ Cor. Sec. 32, T.9S., R.37E. W.M.



REGISTERED
PROFESSIONAL
LAND SURVEYOR

Leland Lee Myers

OREGON
JULY 9, 1906
LELAND LEE MYERS
689

Meridian based on O.S.H.D.
drawing no. 8B-16-14

See Baker County Surveys 9-37-6, 9-37-7
9-37-9 & 9-37-10

Note: Conflicting corner monument
has been removed.

- Monuments Set By James Hanley
- $\frac{3}{8}$ " Rebar Set This Survey
- () Original Measurements

MAP OF SURVEY
IN THE NW $\frac{1}{4}$ SE $\frac{1}{4}$, SEC. 32
T.9S., R.37E., W.M.

For L. F. Reed
Scale 1" = 200' November 15, 1976

FILED Nov. 16, 1976
BAKER COUNTY SURVEYOR
SURVEY NO. 9-37-12