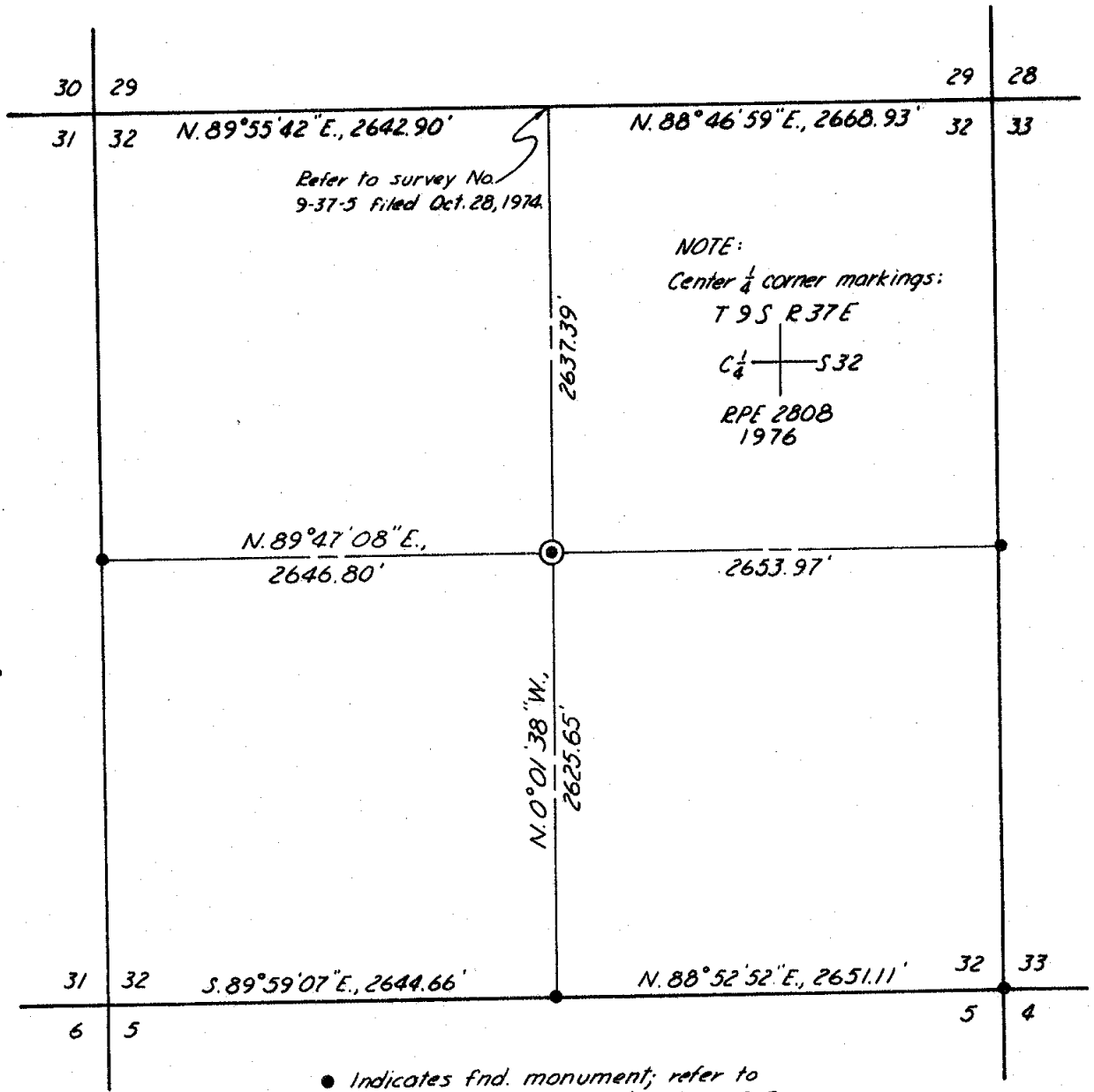


Meridian based on O.S.H.D.  
drawing no. 8B-16-1A



- Indicates find. monument; refer to survey No. 9-37-6 filed July 7, 1975.
- ⊙ Indicates set 2 1/2" brass cap on a 1" iron post, 30" long.

RECORD OF CORNER MONUMENTATION  
THE CENTER 1/4 CORNER, SECTION 32  
T. 9 S., R. 37 E., W. M.

DATE: JULY 19, 1976 SCALE: 1"=1000'

For Fay Reed

FILED AUG. 2, 1976  
BAKLER COUNTY SURVEYOR  
SURVEY NO. 9-37-11

