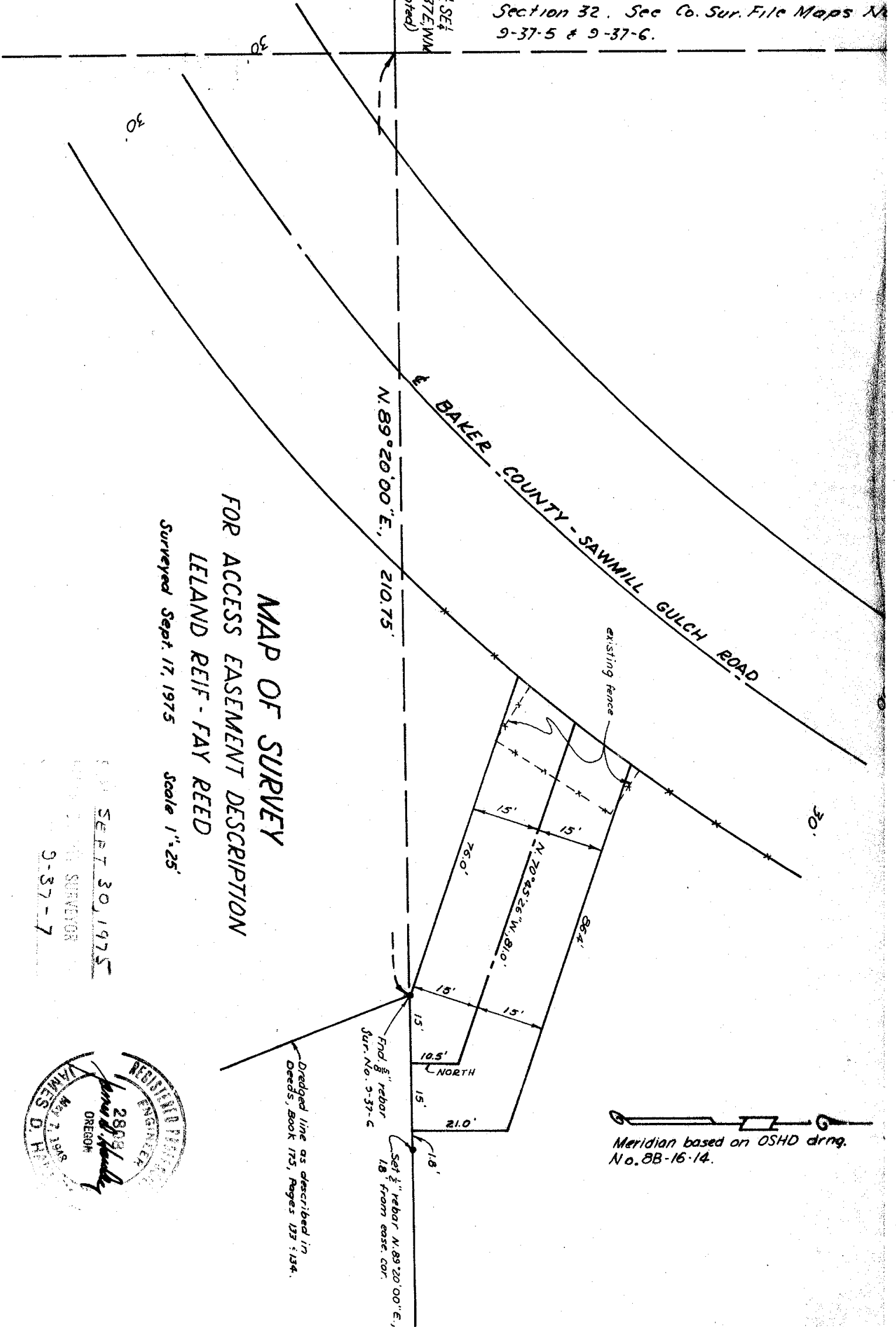


NOTE: Found, 1 1/4-inch cap on iron pin mkd. for this 1/16 corner by Leland May S. 86°26'W, 12.07 ft. from the location I determine by subdivision survey Section 32. See Co. Sur. File Maps No. 9-37-5 & 9-37-6.

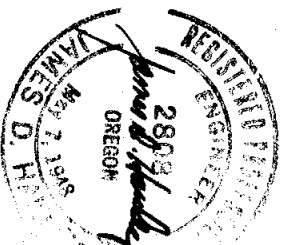
SW COR. NW 1/4 SE 1/4  
Sec. 32, T9S, R37E, W1N  
(not monumented)



MAP OF SURVEY  
FOR ACCESS EASEMENT DESCRIPTION  
LELAND REIF - FAY REED

Surveyed Sept. 17, 1975 Scale 1"=25'

SEP 30 1975  
SUPERVISOR  
9-37-7



Dedged line as described in Deeds, Book 175, Pages 137 & 134.

Found 5/8" rebar Sur. No. 9-37-C

Set 1/2" rebar N. 89°20'00" E., 18' from east. cor.

Meridian based on OSHD drng. No. 8B-16-14.