

The given STS bearing of N. 1° 34' W. on the mid-section line between the South and North quarter corners, rotated 0° 07' (to N. 1° 27' W.) as determined for the East section line true bearing intersected the line between the North section corners for the relocation of the North quarter corner. This location falls in a dredged area in a roadway. The bearing-bearing intersection method is used here because the STS closure for the SE $\frac{1}{4}$ , using this bearing, with an error of closure of about 1:1100 checks much closer than the found distance of 2622.02 feet, compared to the STS 2638.3 feet and the original survey note distance of 40.17 chains (2651.22 feet) between the found Northeast section corner and North quarter corner.

This quarter corner was monumented with a one-inch iron rod, with a + mark chiseled in top, set seven inches below the road surface and two bearing trees were scribed:

- A 12" pine bears N. 24° 28' W., 59.2 feet dist., mkd. S  $\frac{1}{4}$  S 20 BT.
- A 7" fir bears S. 52° 21' W., 70.8 ft. dist., mkd. N  $\frac{1}{4}$  S 29 BT.

The West quarter corner was reestablished on the mid-point between West section corners in accord with Manual of Surveying Instructions, U. S. Dept. of Interior, 1947. This corner must be considered "lost" as defined by the instructions, as STS ties are not considered conclusive evidence for this location, although the resulting bearing of S. 89° 10' 56" W. between East and West quarter corners compare with the STS bearing of S. 89° 05' W. (before 0° 07' rotation). This corner falls in a stream and is not monumented, this survey.

The center quarter corner was monumented with an aluminum cap on one-inch iron post, and two bearing trees scribed:

- A 10" pine bears N. 10° W., 15.8 ft. dist., mkd. C  $\frac{1}{4}$  S 29 BT.
- A 10" pine bears S. 22° E., 20.6 ft. dist., mkd. C  $\frac{1}{4}$  S 29 BT.

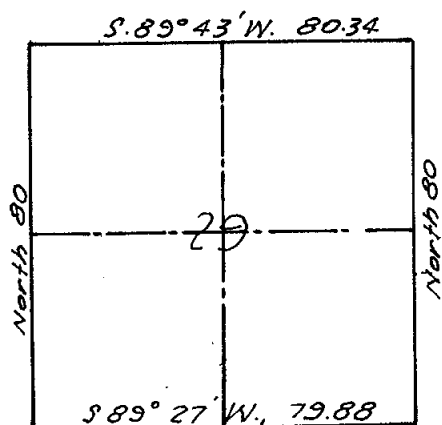
The monument is marked: T 9 S R 37 E  
 C  $\frac{1}{4}$  S 29  
 CS 1974

The Northwest corner of the SW $\frac{1}{4}$ NW $\frac{1}{4}$ NE $\frac{1}{4}$  was monumented by an aluminum cap on one-inch iron post set in a mound of stones.

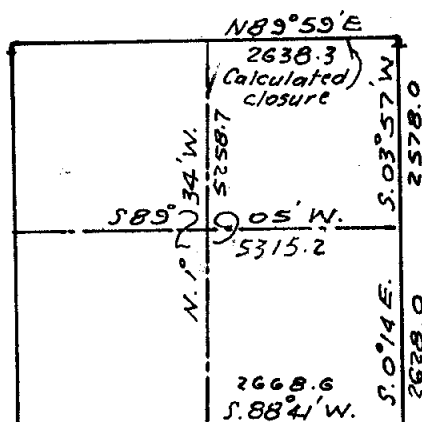
presented

As shown on the accompanying plat of this survey, from the evidence herewith, and from the examinations of the given ties for the mineral surveys previously listed, the relocation of the North, South, and East quarter corners to their original positions is more accurately accomplished by the retracements of the notes of the Sumpter Town-site Syndicate survey of Section 29 than by classifying the corners "lost" and single-apportioning distances along the lines between the section corners.

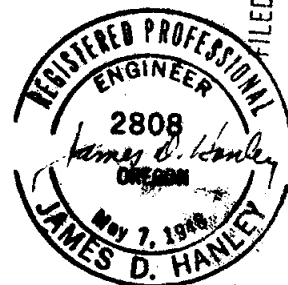
Original survey bearing and distances and STS bearing and distances along the section lines and subdivisional lines are not shown on the plat in the interest of clarity and are shown below:



Original Survey  
 of Oct, 1881



STS Survey Oct, 1899



FILED Oct 28 1974  
 DANER COUNTY SURVEYOR  
 SURVEY NO. 9-37-5