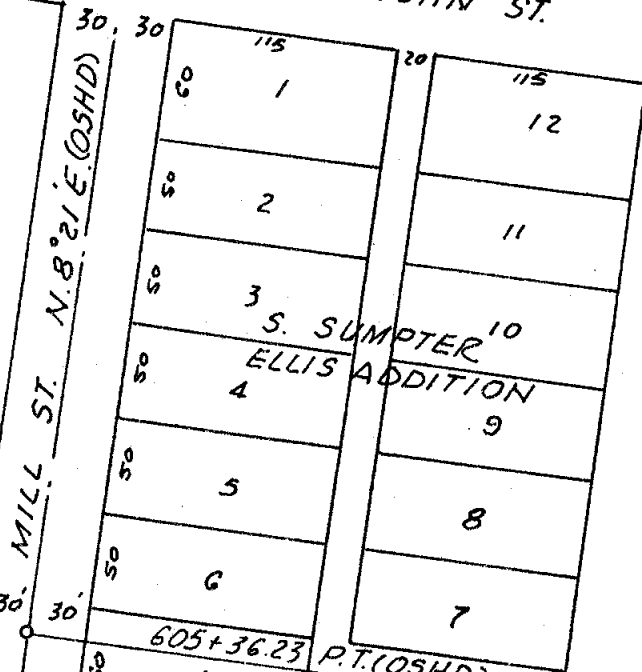


W. AUSTIN ST.

E. AUSTIN ST.



MILL ST. N. 8° 21' E. (OSHD)

605+36.23 P.T. (OSHD)

S.T.S. 3rd ADDITION

SUMPTER, OREGON

400' Sp.
a = 0.5
S = 4° 00'

E. BEECH ST.

S. 81° 39' E

Set 1/2" pin 250.0'

Set 1/2" steel pin

601+36.23 P.C.S. (OSHD)

N. 02° 57' E.

301.33'

Set pin

Chord =

250.0'

Set pin

82.71

Set pin

91.42

Set pin

250.0'

N. 81° 39' W.

Set pin

250.0'

S. 81° 39' E.

Set pin

60.69

Set pin

60.69

Set pin

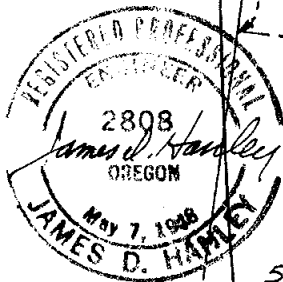
2° C. R.
TA 62° 53' 30"
S 1,953.22'

TRACT SURVEY IN SUMPTER, OREGON

August 23 & 26, 1971

For Lloyd Dinger

1" = 100'



50'

50'

9-37-3